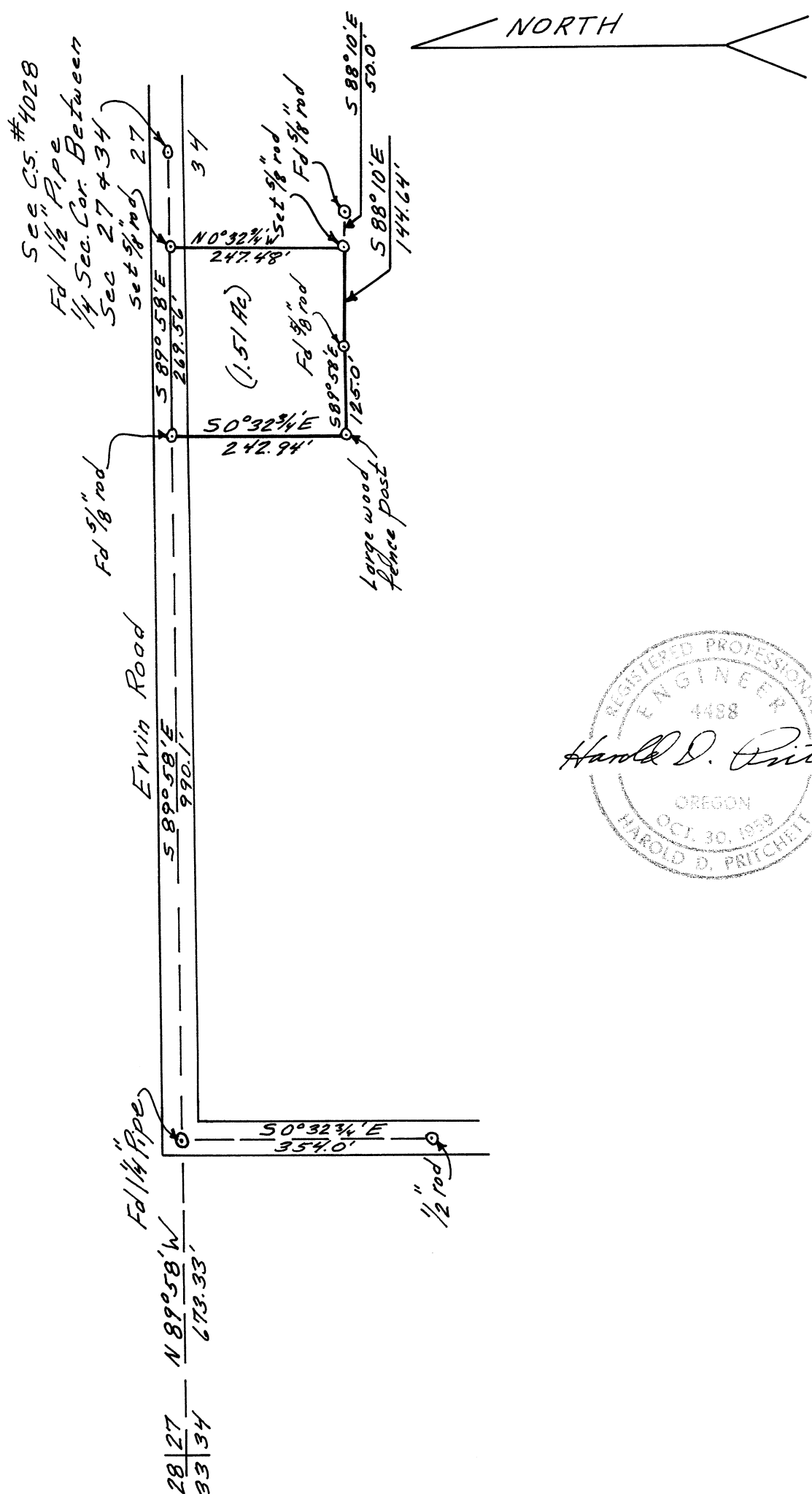


CS 5486
 Survey For
 Donald R. Harris
 Section 34 T.12S. R.6W. W.M.
 Benton County, Oregon
 June 1973
 Scale 1"=200'



REGISTERED PROFESSIONAL
 ENGINEER
 4488
Harold D. Pritchett
 OREGON
 OCT. 30, 1959
 HAROLD D. PRITCHETT