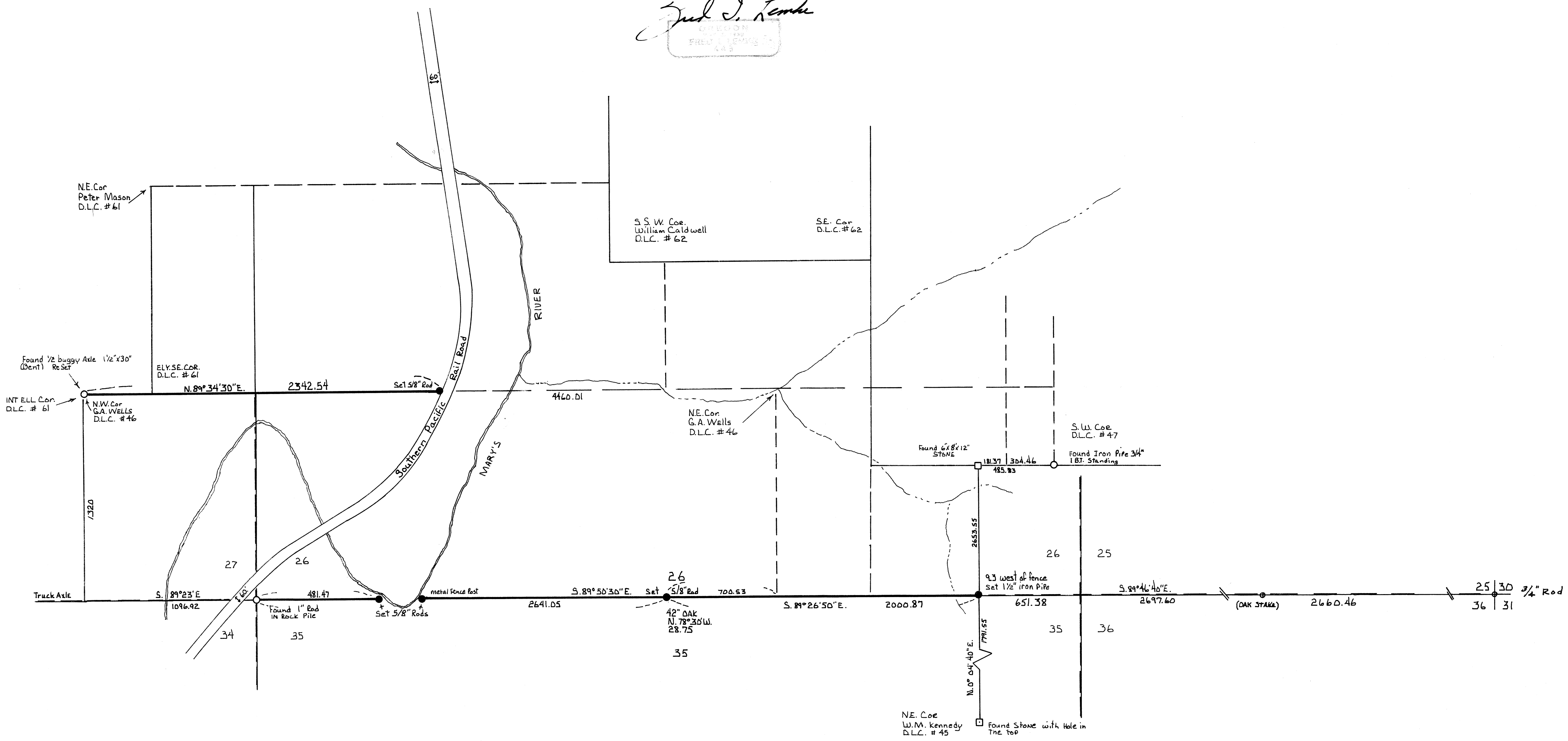


C.S. 5492

SURVEY FOR : ED. W. HOWARD
 In Sections 26, 27, T.11 S., R.5 W. W.M.
 BENTON COUNTY, OREGON
 SCALE 1" = 400' JUNE 10, 1973

PROFESSIONAL
 LAND SURVEYOR
Jack J. Lunde
 OREGON
 FRED. J. ...
 245



5492

5492

5492

5492