

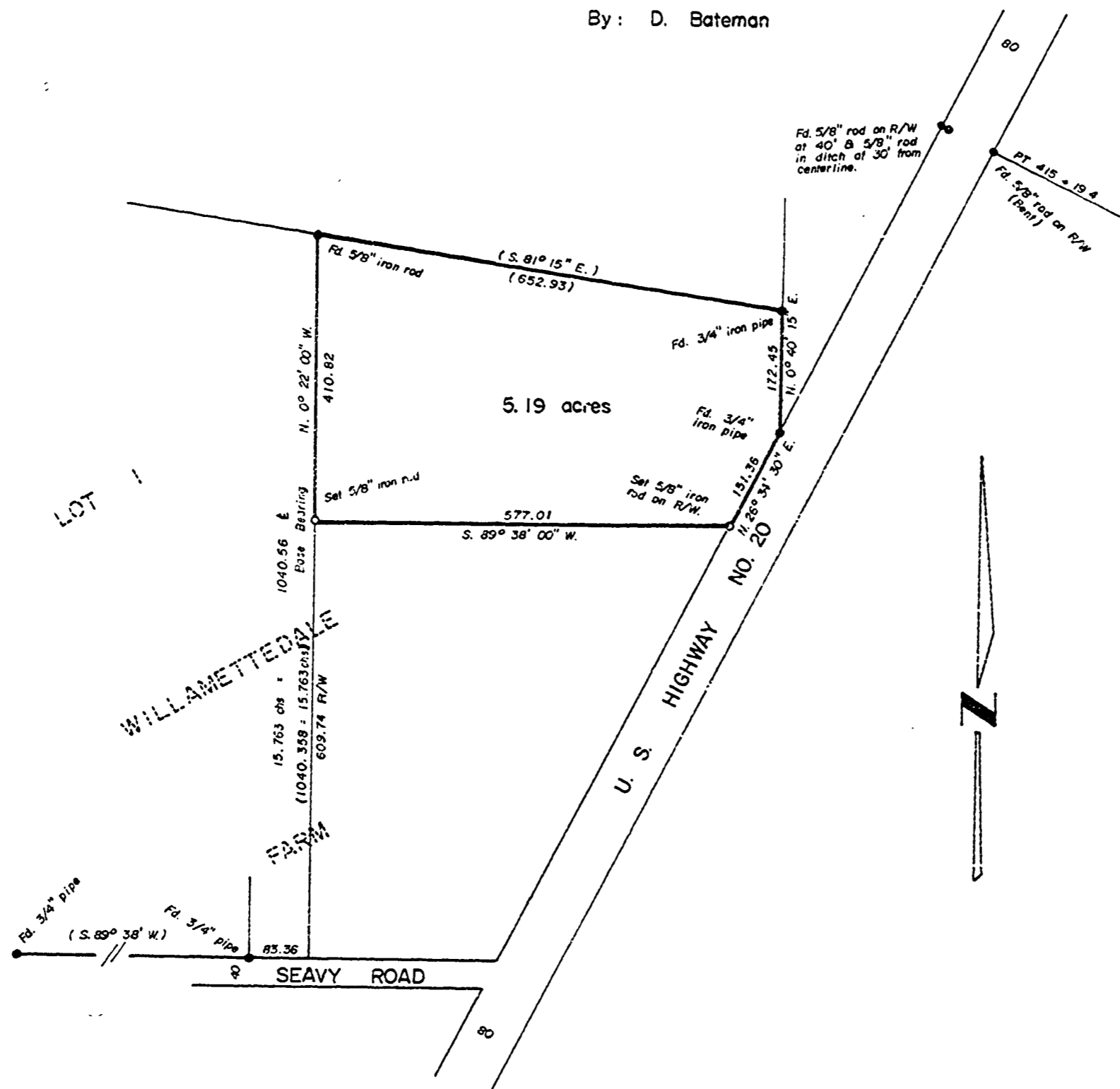
CS 5519  
**C. W. SLATON**

SW 1/4 SECTION 19, T. 11 S., R. 4 W., W.M.  
 Benton County, Oregon

SCALE: 1" = 200'

JULY 25, 1973

By: D. Bateman



REGISTERED  
 PROFESSIONAL  
 LAND SURVEYOR

*Kenneth M. Wightman*

OREGON  
 JULY 17 1973  
 KENNETH M. WIGHTMAN II  
 942