

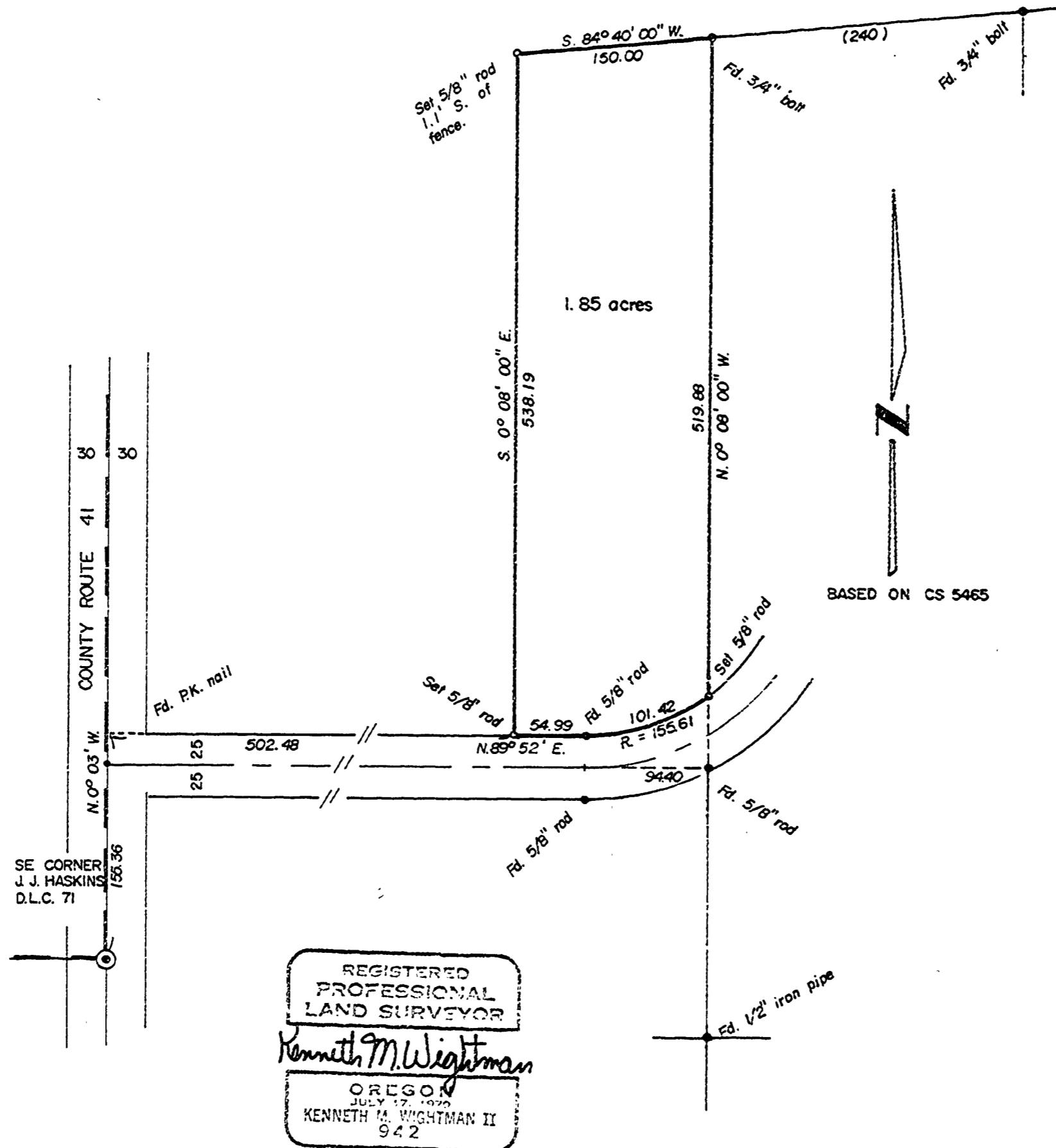
CS 5523

# MILTON H. SPARKS

NW 1/4 SECTION 26, T. 10 S., R. 4 W., W.M.  
Benton County, Oregon

SCALE: 1" = 100'

AUGUST 21, 1973



TIMBERLAND SERVICES, INC  
P.O. Box 668 - Albany, Ore. 97321  
Phone: 925-3539