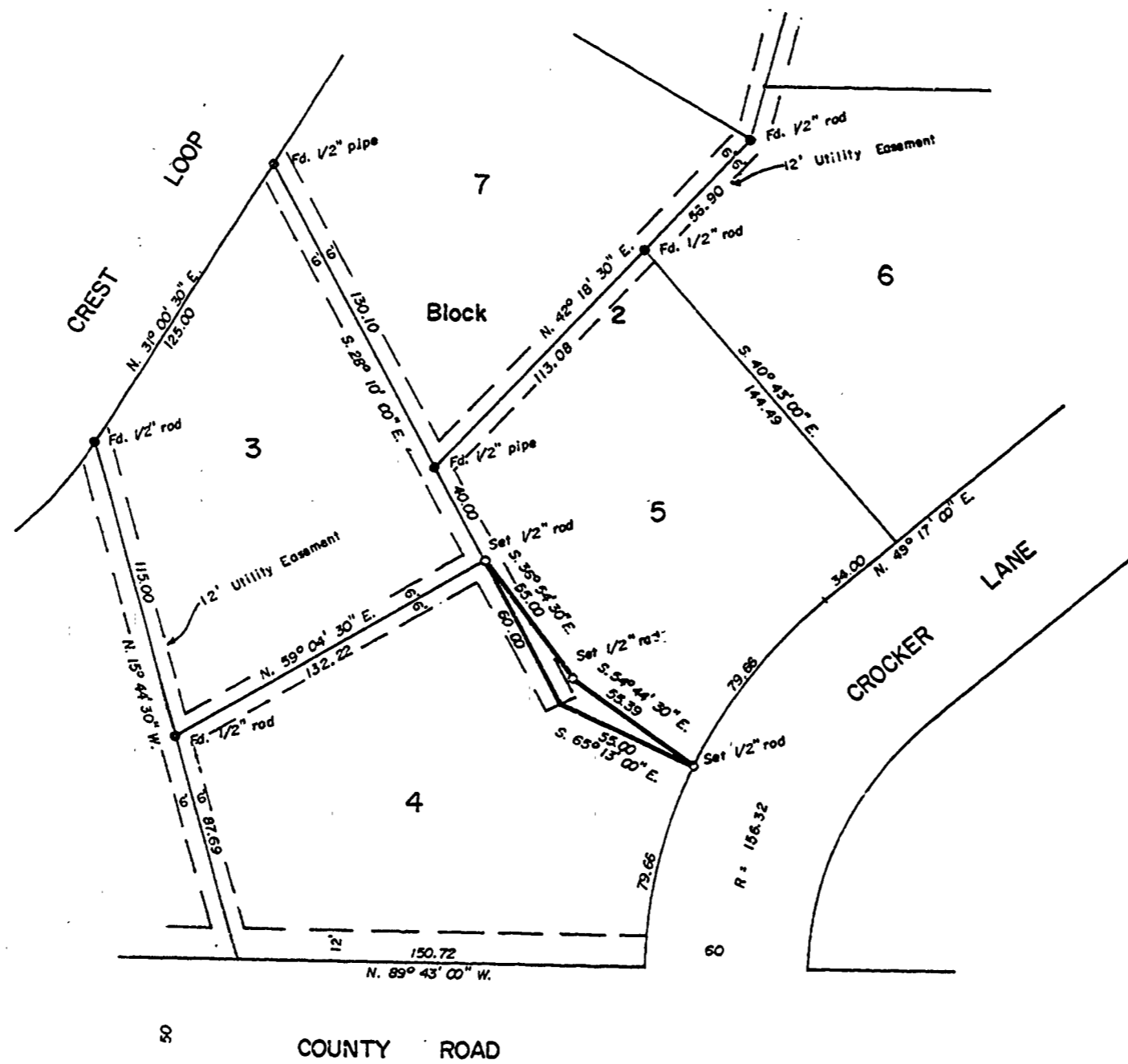


CS 5537
JAKE PRINCE

Portion of Lot 5, Block 2, KINGSTON HEIGHTS SUBDIVISION
Benton County, Oregon

SCALE: 1" = 60'

AUGUST 14, 1973



REGISTERED
PROFESSIONAL
LAND SURVEYOR
David S. Schmidt
OREGON
DAVID S. SCHMIDT
616