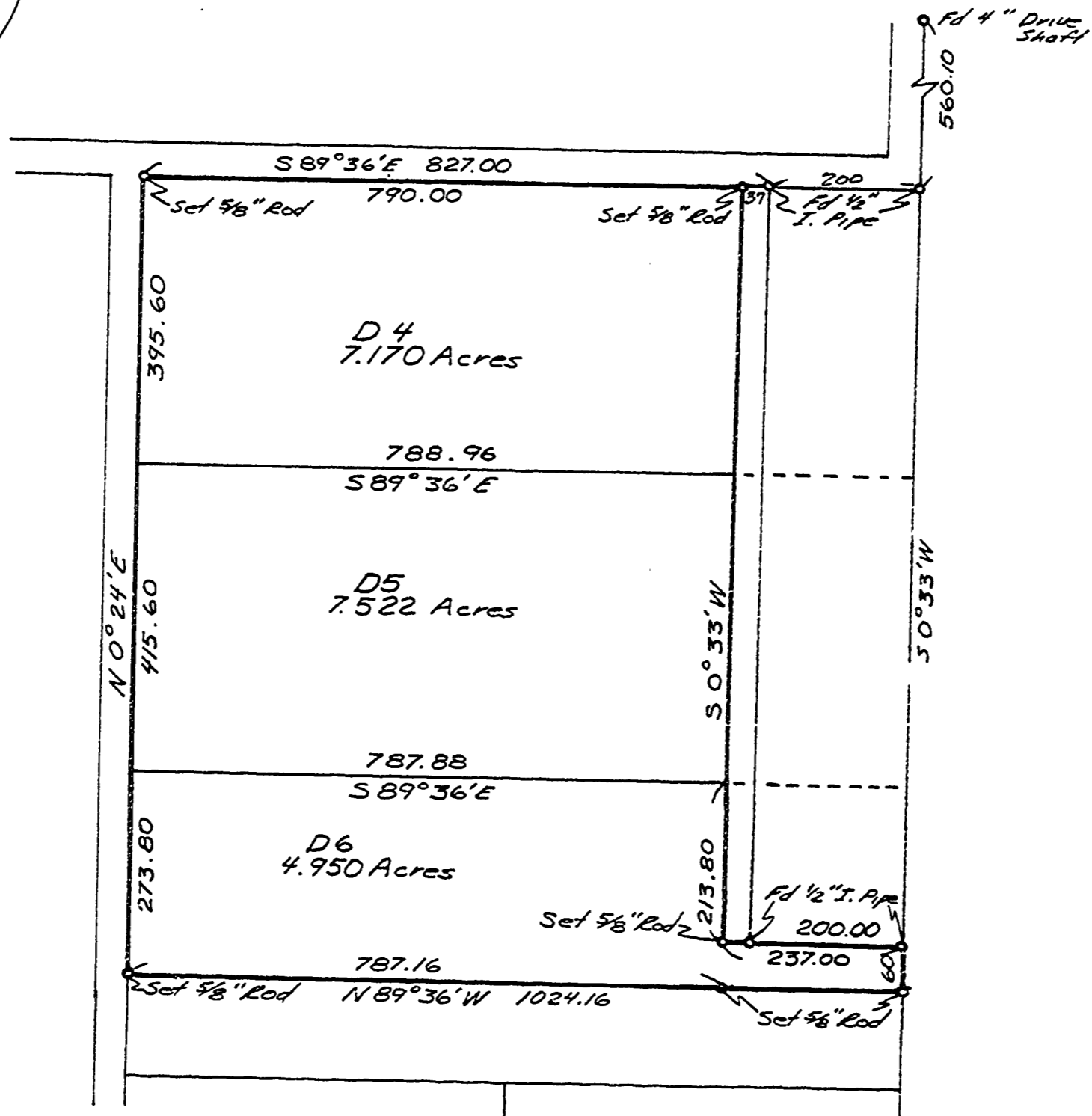


C.S. # 5553
 Record of Survey
 for
MABEL LUCAS
 in
 Anderson Colony Orchards
 T.14S., R.1E., W.B.&M.
 Benton County, Oregon
 Scale 1"=200' June 14, 1973



REGISTERED
 PROFESSIONAL
 LAND SURVEYOR
Verle C. Moore
 OREGON
 MAY 13, 1960
 VERLE C. MOORE
 501