

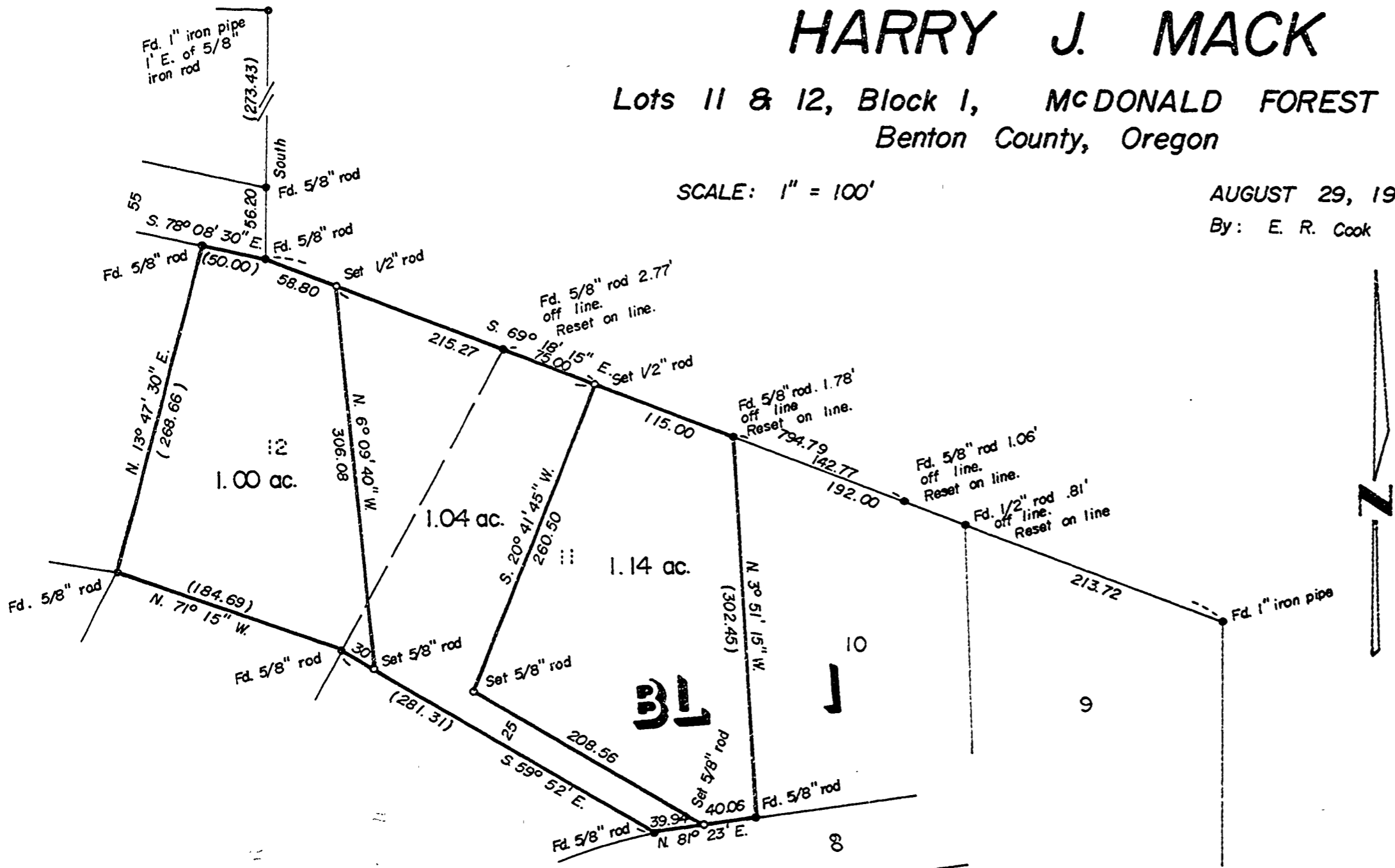
C.S. 5571
HARRY J. MACK

Lots 11 & 12, Block 1, MCDONALD FOREST ESTATES
 Benton County, Oregon

SCALE: 1" = 100'

AUGUST 29, 1973

By: E. R. Cook



REGISTERED
 PROFESSIONAL
 LAND SURVEYOR
Kenneth M. Wightman
 OREGON
 JULY 17, 1970
 KENNETH M. WIGHTMAN II
 942

TIMBERLAND SERVICES, INC.
 P.O. Box 668 - Albany, Ore. 97321
 Phone: 928-3539