

C.S. # 558

See notes in file

F.B. 19-28

28

#558

F13 19 PG 28-32

C.S. 558

CS 204 Cont. from 11.19.72

Claude Lyday 7/25-16

Begin at 7 I. Eddy Tract

= 21.61' E of 132' N. of 'D'

Run N. 0° 36' W. on true E. line Lyday

'D' cont.

4.75 + 9.7 4.718

2.077 + 14 2.033 6.753

0.643 7.396 Near C.I. COR. 6000 S-N 87° 23' E.

Set cor. Mark - 403 7.457

S. 87° 04' 5" W. T.L.

N. 59° E. 'J'

5.509 5.509 10.018

4.194 + 14 4.060 9.569

7/27

From 2. 5.88° W

0.959 9.59 10.528

2.206 - 14 2.238 12.766

3.130 - 12 3.037 15.823

1.204 - 10 1.185 17.008

1.981 - 20 1.859 18.865

4.117 - 12 4.027 22.892

2.759 - 10 2.740 25.632

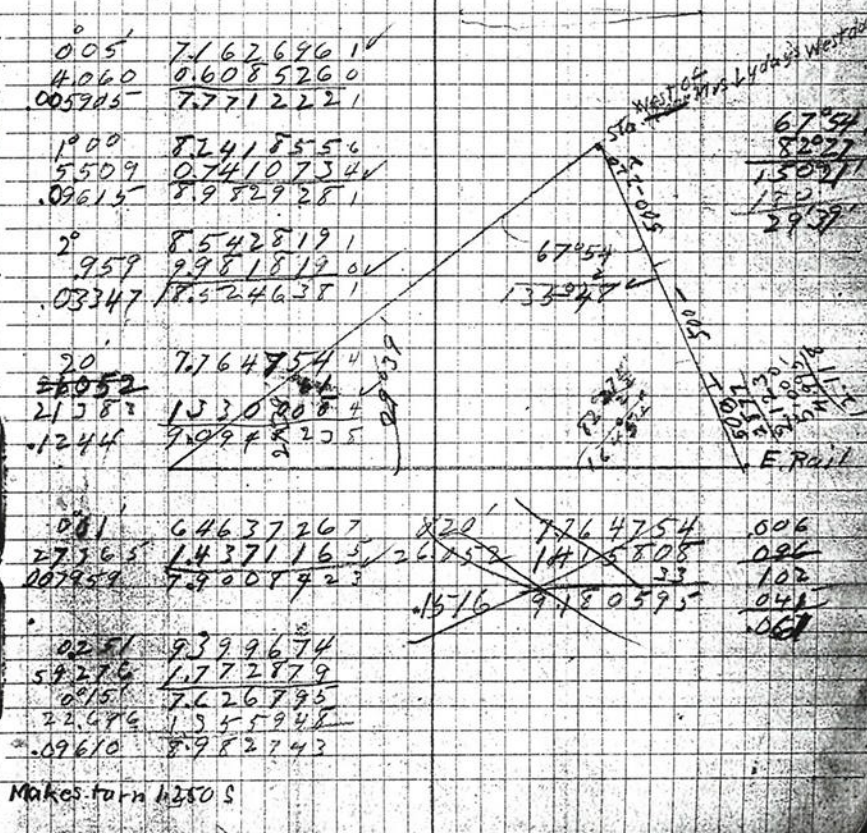
2.634 - 13 2.561 28.193

4.119 - 25 3.718 131.911

4.787 - 7 4.668 736.580

5.66 1.67 + 27 6.000

1941	72	4.994	065	47	275
2.033	2.033	31911	10525	7800	52275
053	8204070	21383	1042	4662	8940
9569	0980867	26052	21	9001	59621
.6321	9184937	N.	8	006	59226
055	8204070			033	545
4060	0608526			124	086
06495	8512586			259	096
49569	0970867			008	030
0023	8531729			251	107
					287
					048
					279



Makes turn h350 S

29 "K" 204.C
Corrects W. of J

From CI from North

① 2.767+9°	2.241		
② 964+2°	959	3.200	L.R. 0° 07' (Falls 0.13 W of J-143)
③ 3.507-14°	3.399	6.599	E.007 L.R. 0° 15'
2.70 - 10°	2.545	9.144	
5.00 - 14°	4.835	13.979	
5.00 + 12°	4.998	18.977	
3.00 - 4°	3.000	24.977	
④ 1.576 -	1.506	93.453	
⑤ 3.161-9°	3.119	26.602	E.087
-1.29	1.13		stone 14x11x7 C.S. ointap.
⑥ 1.715-5°	1.709	28.315	L. 20' L. 1.0° 35' E. 085
⑦ 3.006-10°	2.953	31.264	
⑧ .725 -	.725	31.989	= R. 10' L. R. 0° 30' W. 021
⑨ 2.898-18°	2.782	34.745	
⑩ 1.504-14°	.489	35.234	= R. 40' L. R. 0° 30' E. 009
⑪ 4.355+7°	4.317	39.547	= L. 20' L. L. 1.000 W. 019
⑫ 2.273+20°	2.136	41.683	
⑬ 1.130+5°	1.126	42.809	= R. 10' L. R. 0° 30' E. 029 W. 019 -083 Falls 0.05 W of J-143
⑭ 4.610-4°	4.594	47.403	
⑮ 1.376+22°	1.206	48.603	
⑯ 1.763 -	1.763	50.392	
⑰ 2.672+17°	2.533	52.927	E. 029 W. 325 North
	72.147	.019	cap. beams N. 50° 37' W. 325
	1.98	52.946	
	52.929		

2067	4.263	1150	2480	02927	26.602	28.311
21136	4.311	1.206	2.535	42.809	6.599	6.599
				10.115	28.003	21.712
0° 07'	7.308824			3.42	2.3483	3.79422
3.799	0.531351			2.64	6.598	1.1
.006921	7.840175			.079	6.598	1.1
0° 15'	7.639516			2.68	9.429752	1.05
21.712	133.6700			52.946	1.723667	0.98
.09474	8.976516			0° 17'	7.86083	0.74
0° 15'	7.639516					.029
20.022	13.010951			15	7.639816	5.2946
.08728	8.940911			16.884	12.27372	2.8211
0° 20'	7.764754				1.03	24.635
4.062	2.565612			.07367	8.867291	
3.678	8.330366					
0° 10'	7.463726			4.178	2.6602	2.6602
3.241	0.510679			.089	2.6473	2.6524
.009428	7.974405			.598	.129	.078
0° 40'	8.065776			.007		
4.317	0.635182			.183		
.05023	8.720958					
0° 20'	7.764754					
3.262	0.513484					
.01598	8.278238					
0° 10'	7.463726					
10.115	10.050952					
.02943	8.468821					
8.637	8.770470				9.999242	
3.287	9.515874				9.515874	
.08256	18.258443				19.525116	32.75
E W						
0° 07'	1.78	9.250420				
0° 07'	5.2946	1.723833				
0° 09'		10.974253				
0	0.21	0.114	7.526587			
0° 09'			0.11			
0° 50'			2.146			
0	0.19		5.45056			
0° 29'						
C	3.25					
	190.368					
	1.82					
	2.275					
	1.11					
	0.88					
	0.32					
	1.61					

30 L 204 contd
 At F. Eddy Tract ^{Marked CS +} set stone already set
 set stone S 32° E 2.078

Produce ~~at~~ North line S 89° 40' W

① 4791 ^{T.R. bears N 21° 14' W}
 Point on E Rail RR
 N 21° 14' W 7.876 To "J" ② +410 sta
 At .737 sta 682 R.R. River bank bears

AT From "J" ② N 21° 05' W. River is West
 West to River
 6.000 3.10

② 14.425 ^{2.80}
 2.75 ~~2.75~~
 N 24° 38' W 5.8
 5.302 1.68
 +1.595 = 700 D 2
 " 6.99 + 75 PT?

③ N 28° 05' W 6.99
 6.550 1.24
 ④ 9.350 ^{2.55}
 1.95 Near Div. line ① + 120 sta 706 Δ

1.15 for div. line ^{CS. 104}
 6.056
 +.017 " " " ^(N. 016° W. 008) Div. line N 89° 15' E.

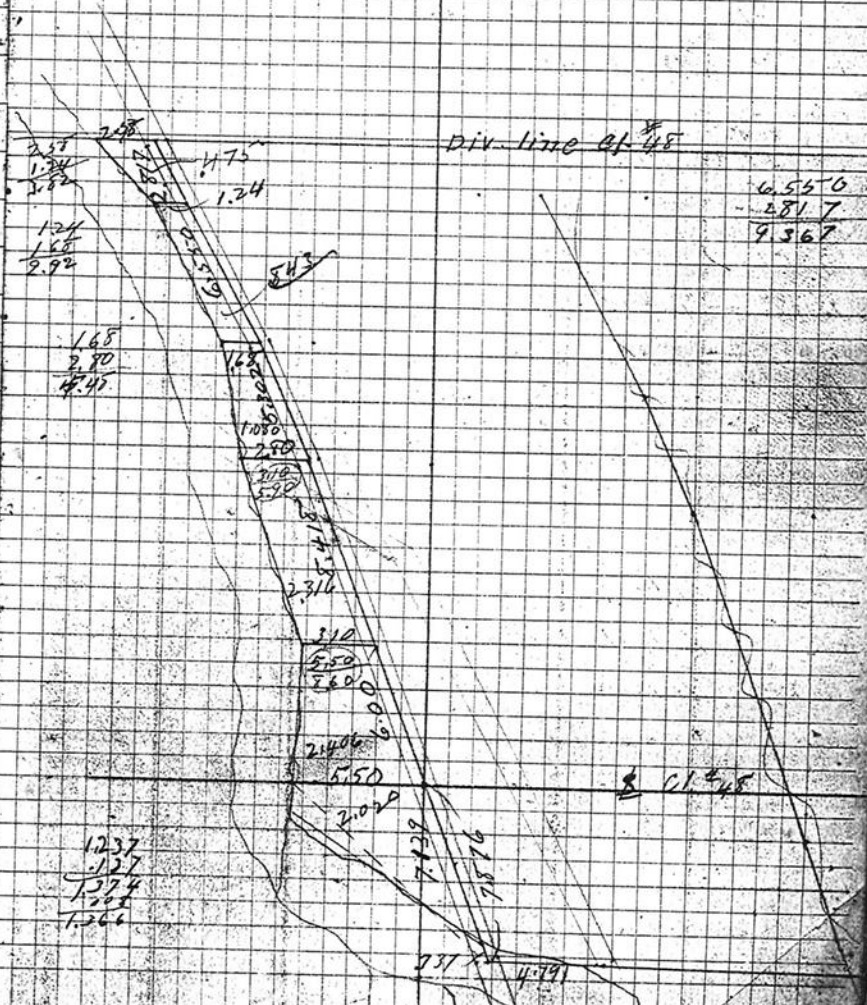
"N" Div. line "K" ⑤ - 129 S 159° 45' W.

⑤ 5.50 - 3°	5.492	5.309
⑥ 5.00 - 5°	4.979	10.288
⑦ 1.674	1.674	11.962
- 3.530 - 7°	3.507	15.464
- 4.400 - 8°	4.349	19.813
⑧ 5.00 - 6°	4.973	24.786
⑨ 4.553	4.553	29.369
- 5.00 - 14°	4.841	34.210
- 5.00 - 10°	4.924	39.134
- 4.95	4.950	44.084
- 4.237	4.237	48.321

E Rail on S of "L" ④
 +.127 set stone 220 N
 River bank (water)

5.8 21017

1513	1504	7.876	1.90
3.030	1.875	7.37	2.163
11.925	2.099	7.139	1.787
2.637	2.534	4.1	9.350
0.18		7.549	1.017
			9.267
			6.550
			1.557
			2.817



1237
 .127
 1374
 1.208
 1.266

6.550
 - 2.817
 9.567

31

"M"

204 COM

From "K" West

① 1.23-11^{0.325} 1.200 878 ^{N. 59°40' W} 4 R. 20'

② 3.337-14^{0.325} 3.146 4.024
5.000-22 4.636 7.660

③ 4.223- 723 9.373

④ 2.608+9^{0.325} 2.570 10.953 ^{N. 067} L. 2°55'

⑤ 4.326+4^{0.325} 4.321 16.268 ^{S. 220} R. 0°20' 2 R. 2°55'

⑥ 1.665-13^{0.325} 1.664 17.938 ^{+971-11° Fals. 003N of D}

-5.000-12^{0.325} 4.571 22.818

-2.500-8^{0.325} 2.767 25.586

-5.000-15^{0.325} 4.812 30.398 ^{N. 112°5' W N. 105'}

⑦ 3.572- 3.572 34.289 ^{L. R. 0°15'}

⑧ 15.359- 15.359 49.649 ^{L. to "K" @ 15 30°22' 60°05'}

⑨ 2.398- 2.398 52.047

⑩ 3.327- 3.327 54.368

⑪ 4.252- 4.252 58.620 ^{BT 15. N 84°55' 360 N. 258'}

⑫ 3.066- 3.066 62.658 ^{cor. bears S. 92°22' E. 678' 15. 669}

⑬ 3.066- 3.066 62.658 ^{E. Rail R.R. bears. S. 25°15' E. N. 289'}

⑭ 3.066- 3.066 62.658 ^{S. E. 2.15 61°10'}

⑮ 3.066- 3.066 62.658 ^{S. 28°15' E.}

30.643 "K" ④

A. T. 10.00 L. to "K" ④ is 42°02' x 84°03'

" 5.00 " " " 39°06' x 76°12'

3811	34.254	62.656	59.620	11.953
3772		34.284	34.284	878
		28.400	25.356	11.075
9°20'	9209472	9994212		
678	8831230	9531230		34.284
1100	19.041222	19.825442	6690	16.268
59.620				18016
11				N. S.
59.57				064 019
0°20'	7.7647544	7.7647544		105 220
11.075	1.0640204	1.044145		258 667
06742	8.828774	1064408.805902		427 908
2°55'	8.7065774	99994375		428
4321	0635574	0635574		481
2198	7.342767	1063502.10	4.315	
0°20'	7.7647544			
18.016	1.2556585			
1048	9.020412			
0°35'	8.007787			
25.336	1.4037355			
2579	9.411522			
0°35'	8.007787			
15.259	1.186108			
1.1564	7.194150			
0°35'	8.007787			
28.402	1.453351			
2872	9.461138			
774	1.572872			
57510	1.774590			
0°22'	7.798282			
89255	8.007787			
3.066	0.456572			
03121	8.494359			
		62.650		
		34.284		
		28.402		
		4.857		
		33.259		

389°25' E TIME
Tues. 5
Wed. 1.0
Thurs. 1.0
Fri. 1.0
Sat. 1.0
Sun. 0.5
Mon. 1.0
60 = 300
150
150
35.20

N 89°40' W
89°25'
07'
S 89°15' E
41'
S 88°37' E

32

Continuation C.S. 204.

Isreal Eddie. July 31-1916

Begin at iron pin set by W.C. G. on

~~North line H. Van Peer D.L.C.~~Produce same as ~~SP4TW~~ ²⁷⁵ to pt. 50' from

set 1" x 20" iron rod.

Waters edge Luckiamute low water

S 89° 47' E. 435' to W. Rail R.R. bear. ~~N 16° 36' W.~~ ^{N 16° 36' W.}thence ~~at~~ ^W along same~~AT~~ ^{pt. 50' from}
^{water is W.}

At iron cor. set at North end of Eddy bottom

tract W of R.R. Run S. 14° 20' E. 712.7

S. 16° 36' E. 510.5

1/2" iron rod 50' from water bears N. 73° 41' W. 4.25

1" " " " " " ⁵⁷ S. 75° 21' W. 4.3291" " " " " " ³⁵ S. 75° 21' W. 5.113

Cont. S. 16° 36' E. 8.379 to pt. 077 N. 117° 0' V.P. Cl.

10 A Tract

At. in road Run N. 32° W. 5.634

Set 1/2" x 18' rod.

At. 7 74 A Tract Run N. 0° 36' W. 4.787

4.787
4.718
069250-144⁰ = 1938

4.783

4.815

4.787

228