

5620

# LOREN BENSON

SECTION 14, T. 14S., R. 6 W.W.M.  
BENTON COUNTY, OREGON

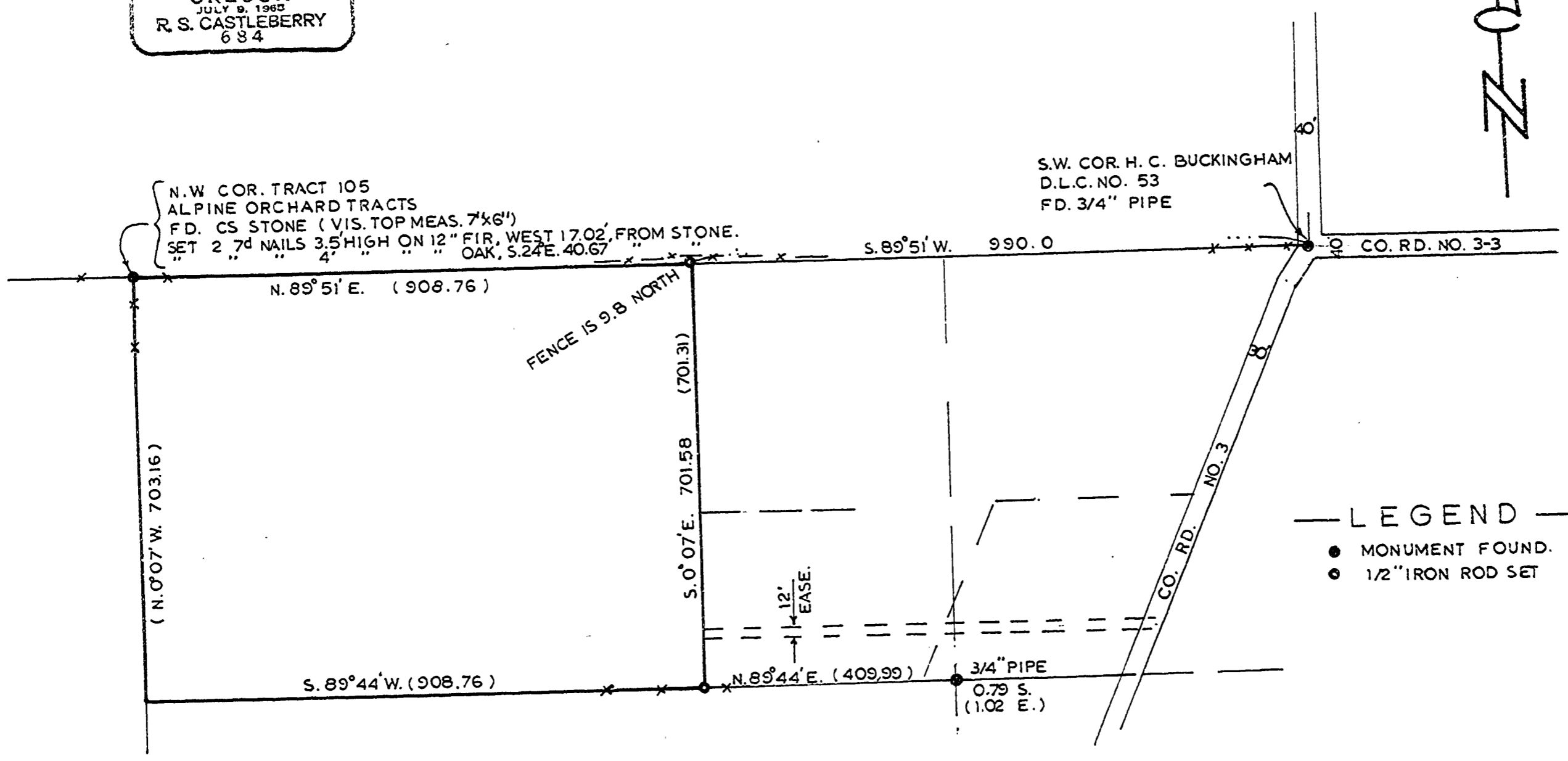
JAN., 1974

SCALE 1"=200'

REGISTERED  
PROFESSIONAL  
LAND SURVEYOR

*R. S. Castleberry*  
Harrisburg, Oregon

OREGON  
JULY 9, 1962  
R. S. CASTLEBERRY  
684



— LEGEND —

- MONUMENT FOUND.
- 1/2" IRON ROD SET