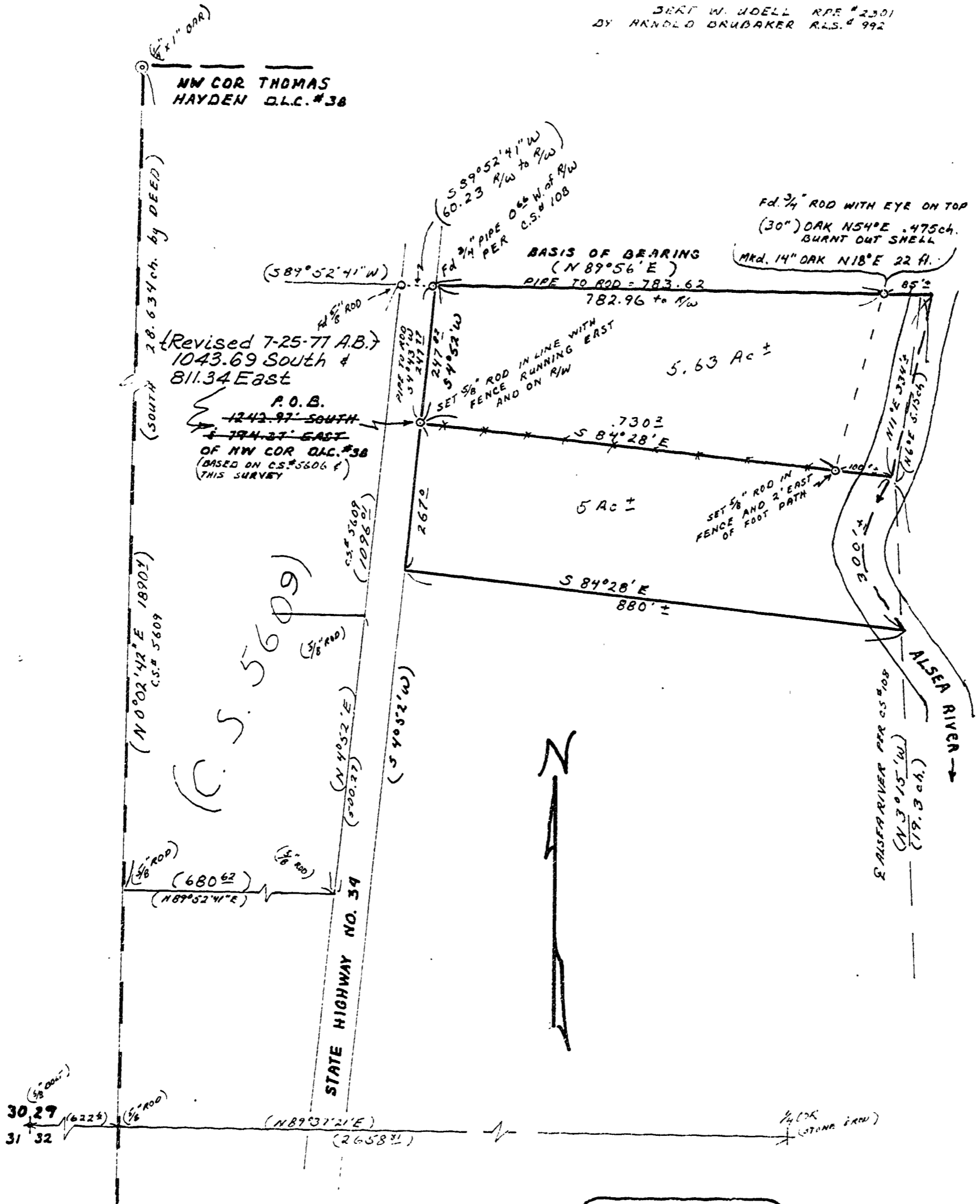


5682  
**JACK TAYLOR**  
SW 1/4 SEC. 29, T.13S., R.7W., W.M.  
BENTON COUNTY, ORE.  
SCALE: 1" = 200' MAY 28, 1974

REF. SURVEYS: CS# 108 & 5606

JERT W. UDELL R.P.S. # 2301  
BY ARNOLD BRUBAKER R.L.S. # 992



REGISTERED  
PROFESSIONAL  
LAND SURVEYOR  
*Arnold Brubaker*  
OREGON  
JULY 13, 1977  
ARNOLD BRUBAKER  
992