

05801

S.W. COR. JOHN L. TRAPP  
D.L.C. No. 38

92.45 NB9°54'00"E

WEST HILLS ROAD

RECORD OF SURVEY

FOR GENE N. THOMPSON

IN The ABIATHER NEWTON D.L.C. No. 42

Township 12 South, Range 5 West, W.M.

Benton County, Oregon

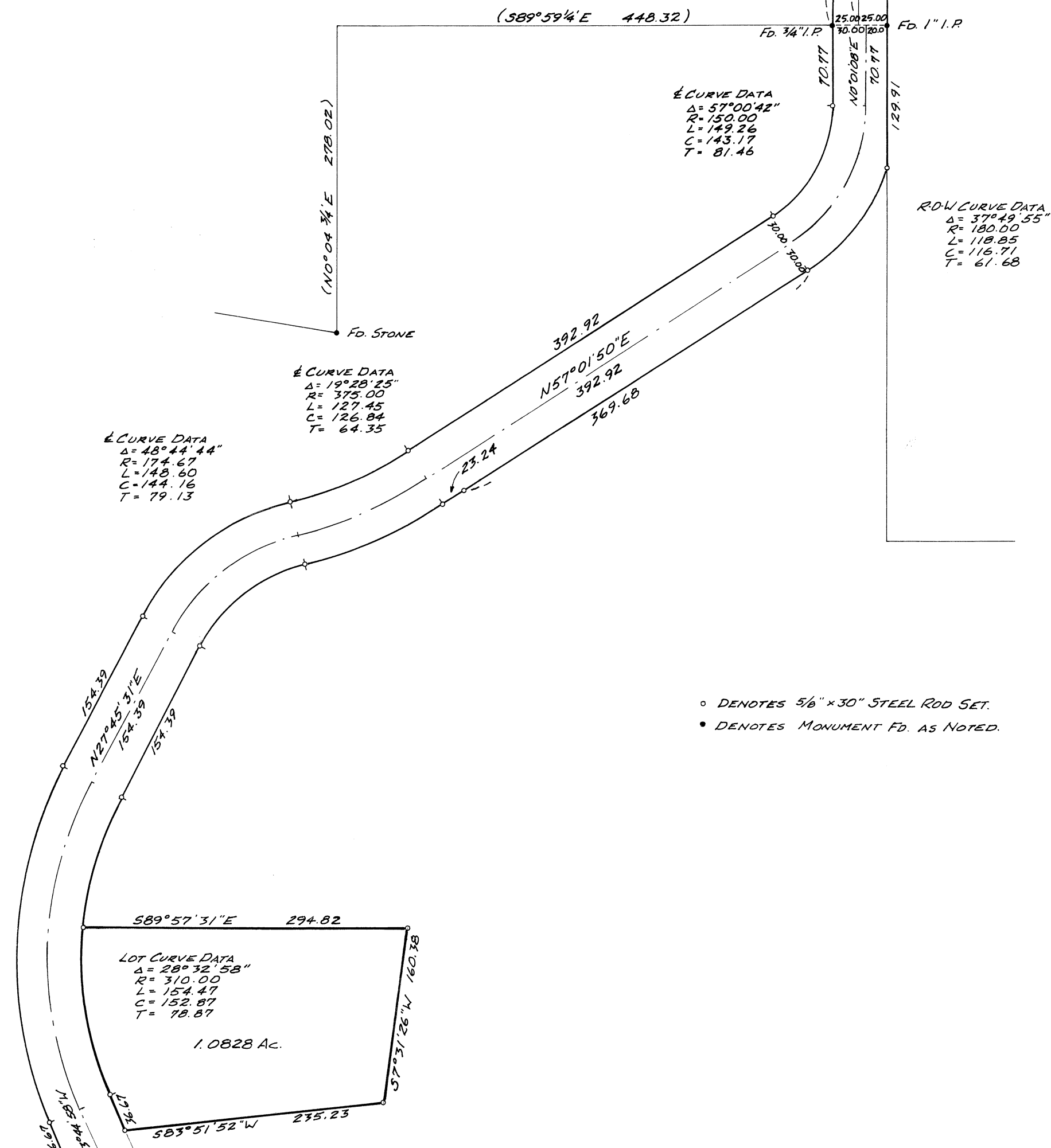
September, 1974

Scale: 1"=100'

REGISTERED  
PROFESSIONAL  
LAND SURVEYOR

*Nick A. Yinger*

OREGON  
JULY 12, 1968  
NICK A. YINGER  
876



Δ CURVE DATA  
Δ = 57°00'42"  
R = 150.00  
L = 149.26  
C = 143.17  
T = 81.46

R.O.W. CURVE DATA  
Δ = 37°49'55"  
R = 180.00  
L = 118.85  
C = 116.71  
T = 61.68

Δ CURVE DATA  
Δ = 19°28'25"  
R = 375.00  
L = 127.45  
C = 126.84  
T = 64.35

Δ CURVE DATA  
Δ = 48°44'44"  
R = 174.67  
L = 148.60  
C = 144.16  
T = 79.13

Δ CURVE DATA  
Δ = 51°30'29"  
R = 340.00  
L = 305.65  
C = 295.47  
T = 164.03

LOT CURVE DATA  
Δ = 28°32'58"  
R = 310.00  
L = 154.47  
C = 152.87  
T = 78.87

- DENOTES 5/8" x 30" STEEL ROD SET.
- DENOTES MONUMENT FD. AS NOTED.

5801

5801

5801

5801