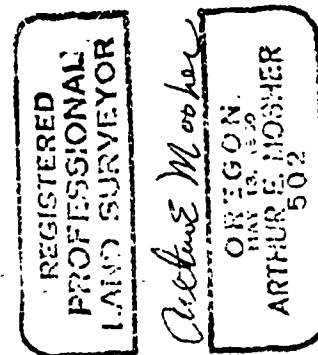


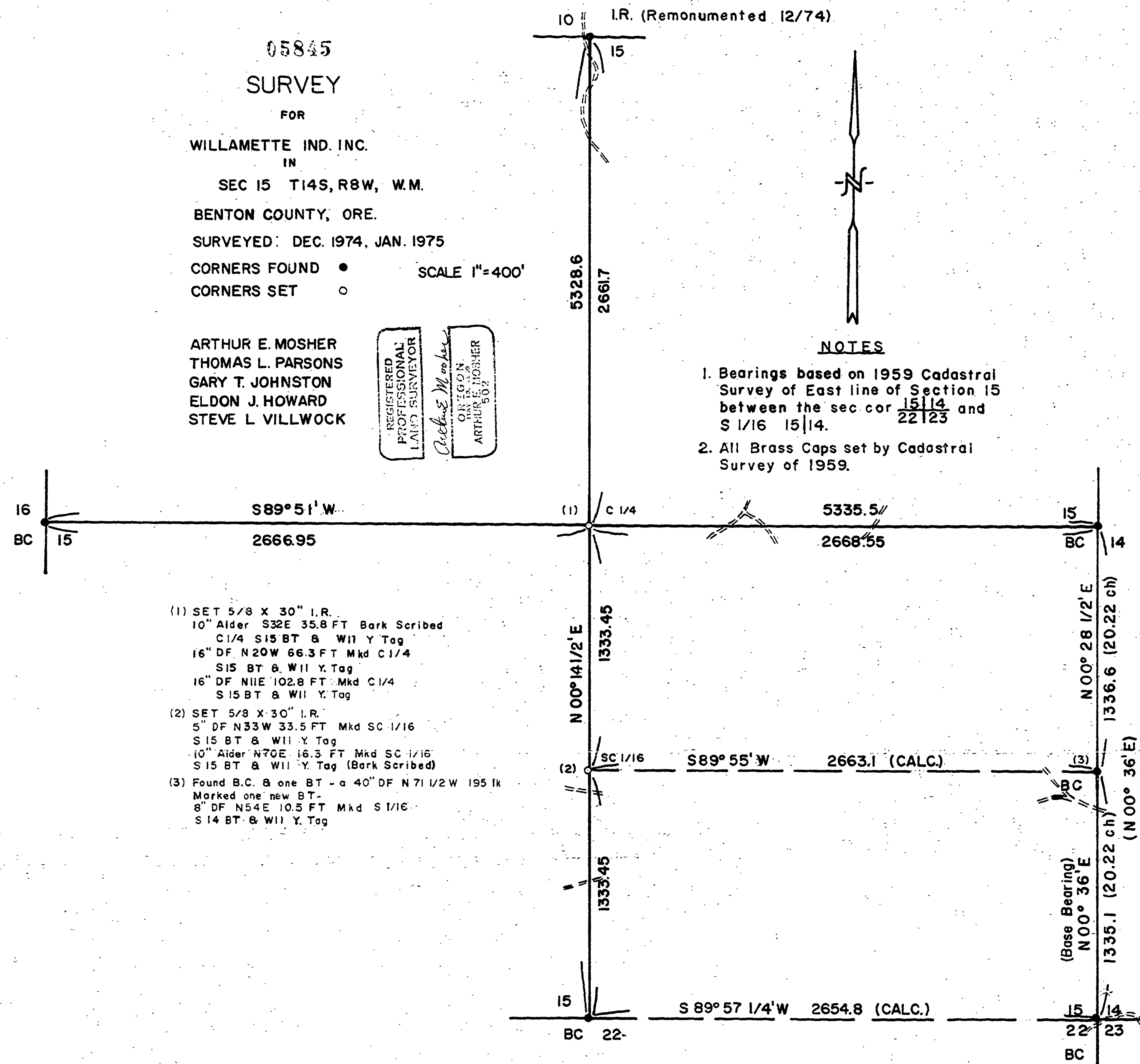
05845
SURVEY
 FOR
 WILLAMETTE IND. INC.
 IN
 SEC 15 T14S, R8W, W.M.
 BENTON COUNTY, ORE.
 SURVEYED: DEC. 1974, JAN. 1975
 CORNERS FOUND •
 CORNERS SET ○ SCALE 1"=400'

ARTHUR E. MOSHER
 THOMAS L. PARSONS
 GARY T. JOHNSTON
 ELDON J. HOWARD
 STEVE L. VILLWOCK



NOTES

- Bearings based on 1959 Cadastral Survey of East line of Section 15 between the sec cor 1514 and S 1/16 1514. 22123
- All Brass Caps set by Cadastral Survey of 1959.



- (1) SET 5/8 X 30" I.R.
 10" Alder S32E 35.8 FT Bark Scribed
 C1/4 S15 BT & W11 Y Tag
 16" DF N20W 66.3 FT Mkd C1/4
 S15 BT & W11 Y Tag
 16" DF N11E 102.8 FT Mkd C1/4
 S15 BT & W11 Y Tag
- (2) SET 5/8 X 30" I.R.
 5" DF N33W 33.5 FT Mkd SC 1/16
 S15 BT & W11 Y Tag
 10" Alder N70E 16.3 FT Mkd SC 1/16
 S15 BT & W11 Y Tag (Bark Scribed)
- (3) Found B.C. & one BT - a 40" DF N71 1/2 W 195 lk
 Marked one new BT -
 8" DF N54E 10.5 FT Mkd S1/16
 S14 BT & W11 Y Tag