

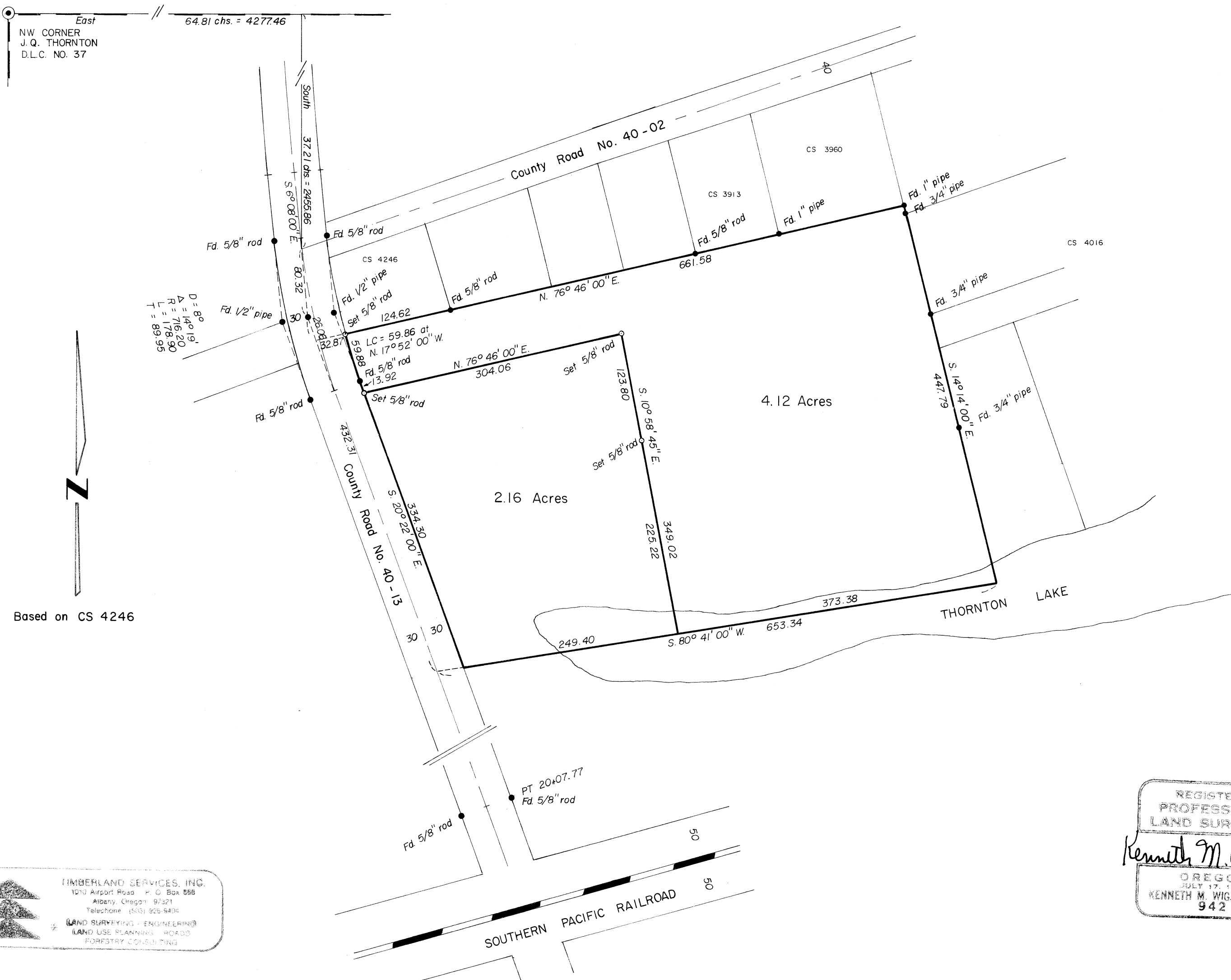
05864

GEORGE R. OLSEN ESTATE

NE 1/4 NE 1/4 SECTION 1, T.11S., R.4W., W.M.
Benton County, Oregon

SCALE: 1" = 100'

MAY 5, 1975



TIMBERLAND SERVICES, INC.
1210 Airport Road, P. O. Box 588
Albany, Oregon 97321
Telephone (503) 926-6400

LAND SURVEYING - ENGINEERING
LAND USE PLANNING - ROADS
FORESTRY CONSULTING

REGISTERED
PROFESSIONAL
LAND SURVEYOR

Kenneth M. Wightman

OREGON
JULY 17, 1970
KENNETH M. WIGHTMAN II
942