

C. S. 4499

N. W. Cor. H.C. Lewis
D.L.C. No. 47

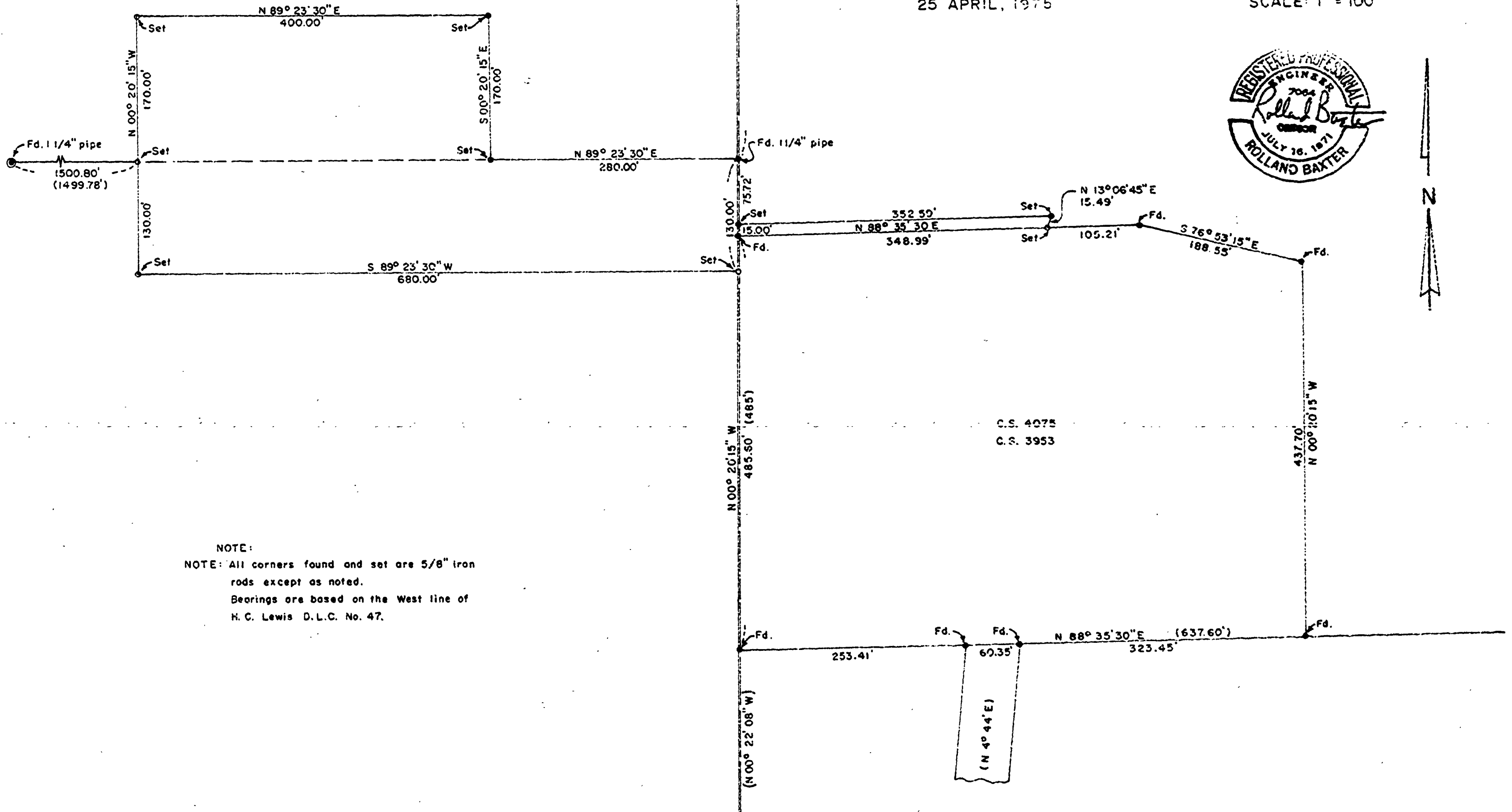
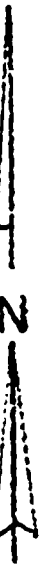
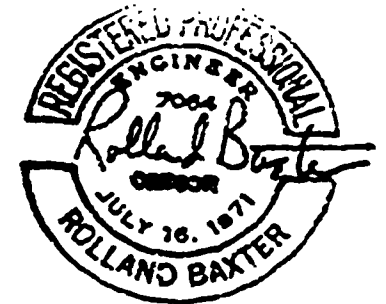
05891

SURVEY FOR CITY OF CORVALLIS

in Section 23, D.L.C. No. 47 & No. 48,
T 11 S, R 5 W, W.M., Benton County, Oregon.

25 APRIL, 1975

SCALE: 1" = 100'



NOTE:
 NOTE: All corners found and set are 5/8" iron rods except as noted.
 Bearings are based on the West line of H. C. Lewis D.L.C. No. 47.

C.S. 4075
C.S. 3953