

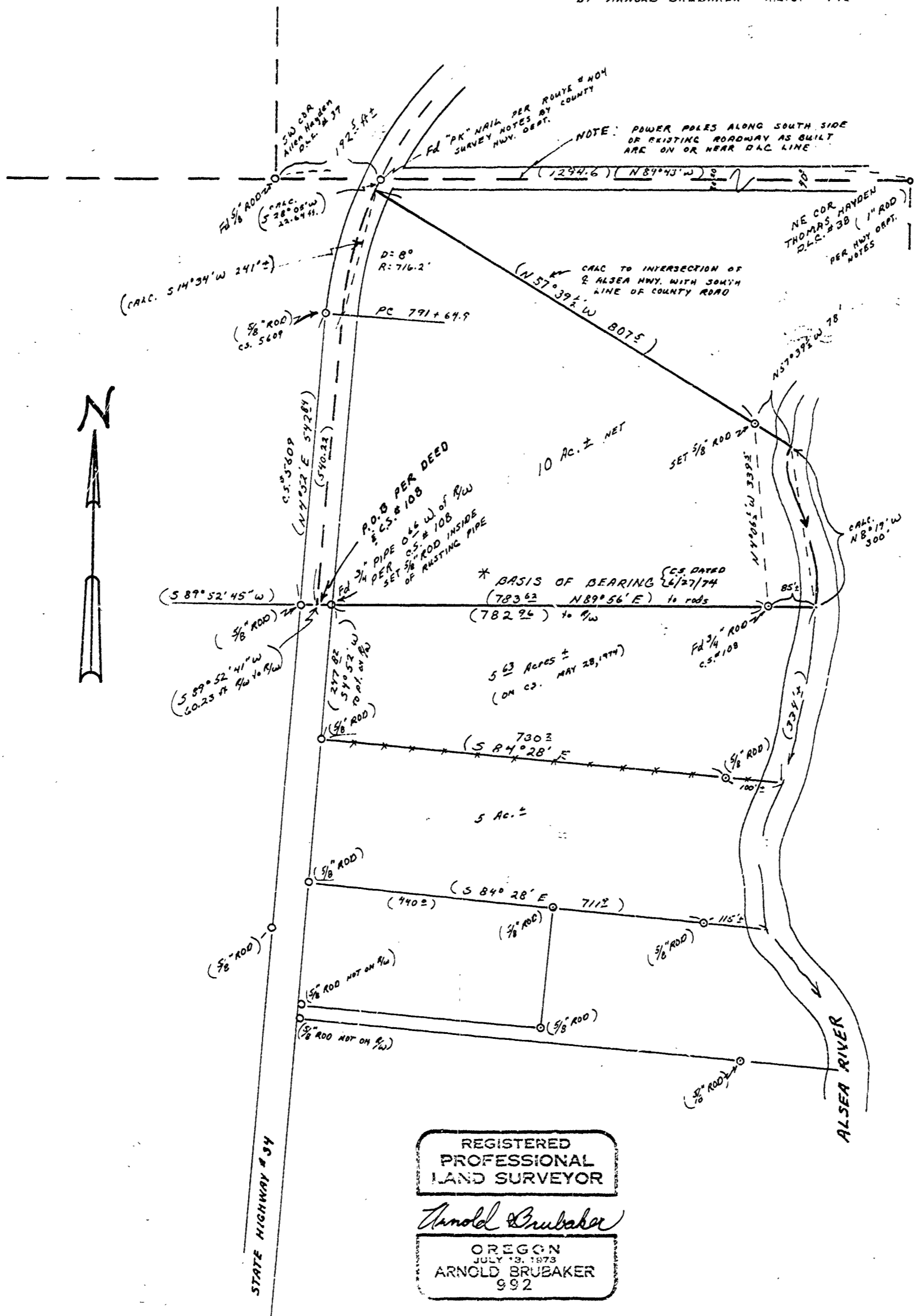
65899

JOHN M. PITARDI

SEC. 29, T.13S., R.7W., W.M.
BENTON COUNTY, ORE.

SCALE: 1" = 200' JULY 3, 1975

DEPT. W. UDELL R.P.E. # 2301
BY ARNOLD BRUBAKER R.L.S. # 992



REGISTERED
PROFESSIONAL
LAND SURVEYOR

Arnold Brubaker

OREGON
JULY 3, 1873
ARNOLD BRUBAKER
992