

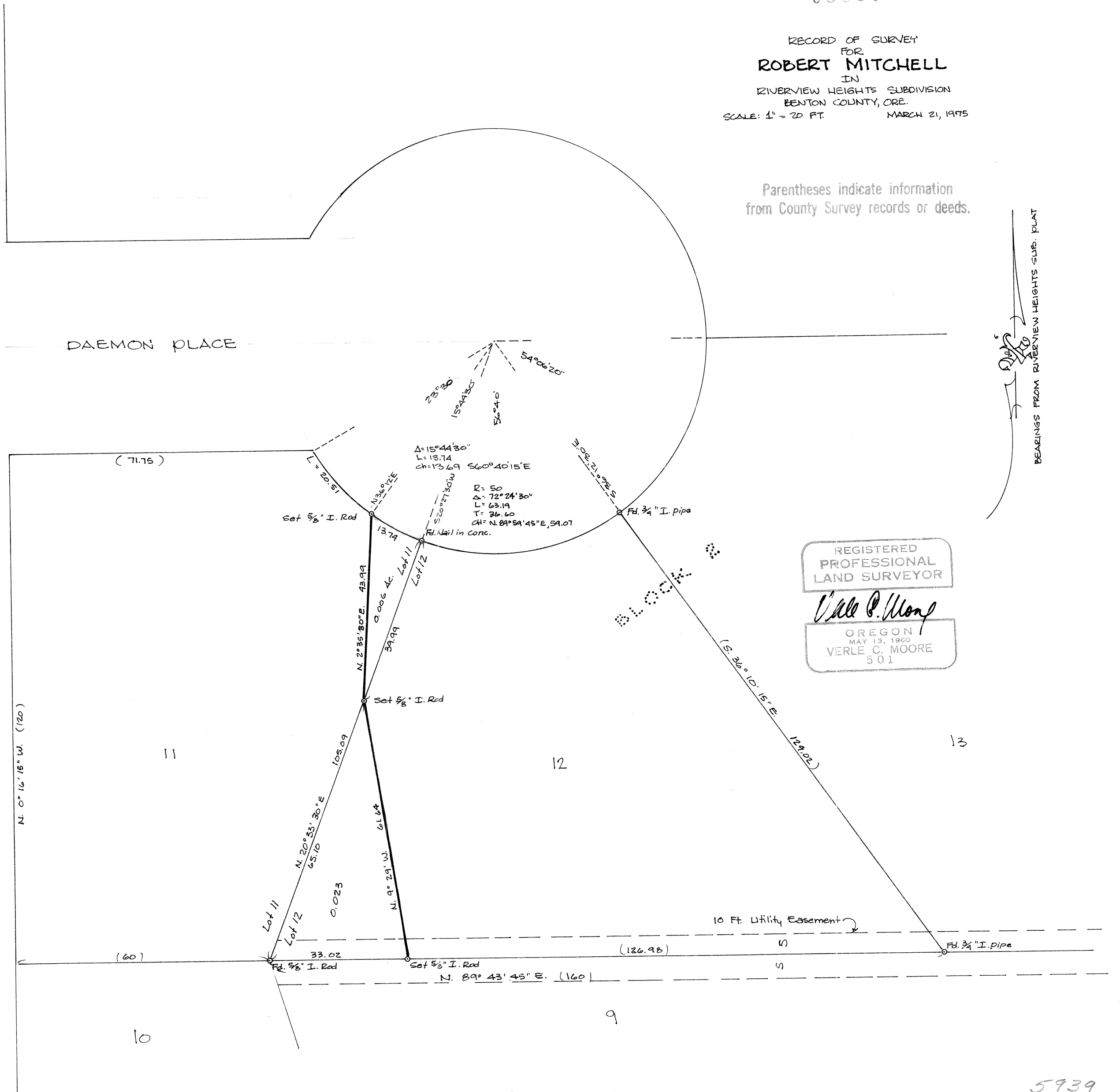
05939

RECORD OF SURVEY
 FOR
ROBERT MITCHELL
 IN
 RIVERVIEW HEIGHTS SUBDIVISION
 BENTON COUNTY, ORE.
 SCALE: 1" = 20 FT. MARCH 21, 1975

Parentheses indicate information
 from County Survey records or deeds.

BEARINGS FROM RIVERVIEW HEIGHTS SUB. PLAT

N.W. 400 LOOP



REGISTERED
 PROFESSIONAL
 LAND SURVEYOR
Verle C. Moore
 OREGON
 MAY 13, 1960
 VERLE C. MOORE
 501