

6006

6006

6006

06006

REX CLEMENS SEC. 28, T. 10S., R. 6 W., W.M. BENTON COUNTY, ORE.

SCALE: 1" = 200'

DEC. 3, 1975

Revised 12/23/75

BERT W. UDELL R.P.E. # 2301
BY ARNOLD BRUBAKER R.L.S. # 992

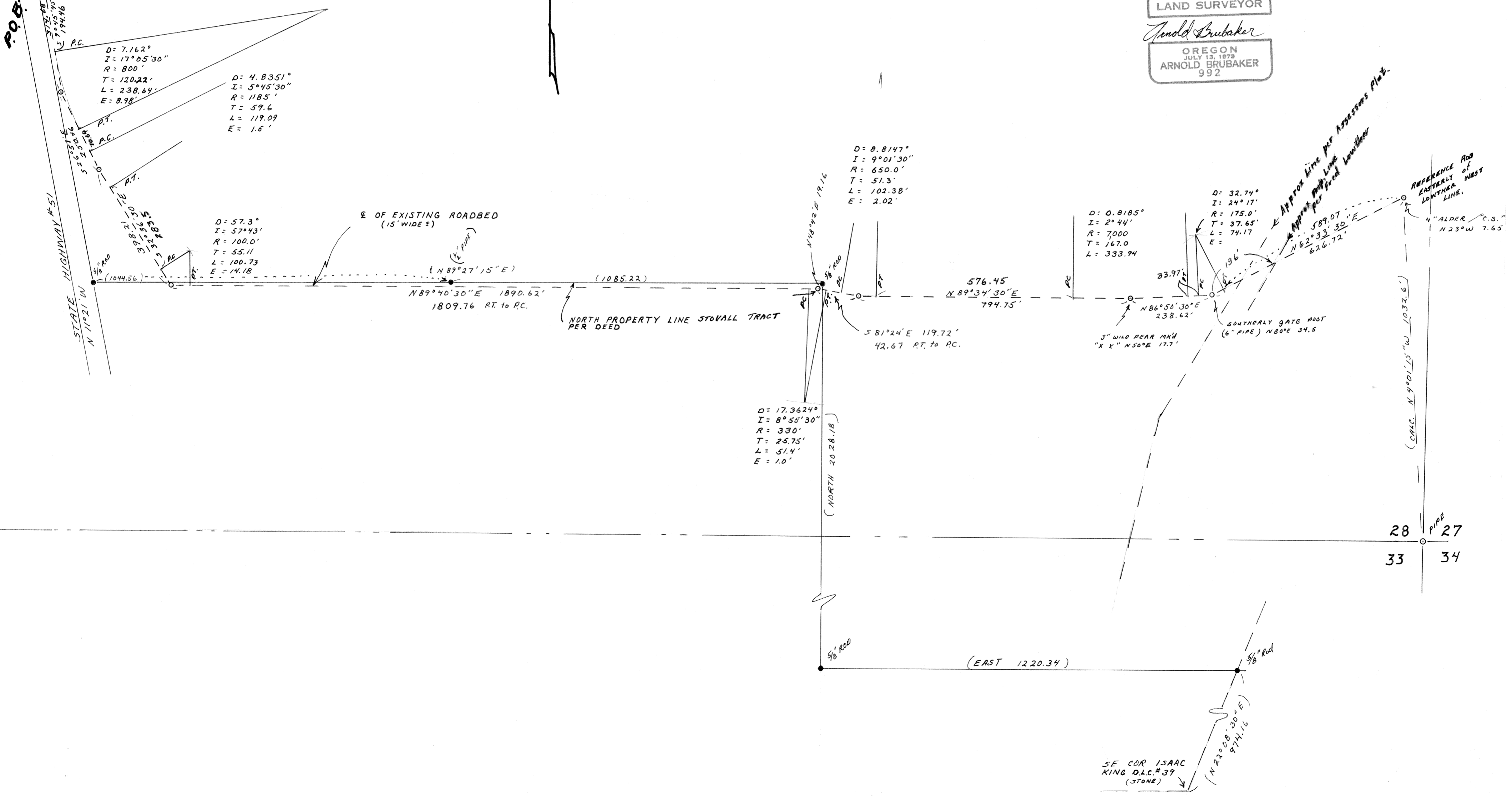
REGISTERED
PROFESSIONAL
LAND SURVEYOR
Arnold Brubaker
OREGON
JULY 15, 1979
ARNOLD BRUBAKER
992

o - SET 5/8" RODS

o = SET 5/8" IRON RODS
• = 5/8" IRON RODS PER
KINGS VALLEY ESTATES -
A FUTURE SUBDIVISION

1653.44' N & 4114.89' W
OF S.E. COR SEC. 28
P.P.# WK 1
D.L.S. N 19° 0' W 77.44'

1598.55' N & 4051.77' W
OF SE COR SEC. 28
P.P.# WK 1
D.L.S. N 19° 0' W 77.44'



STATE HIGHWAY #51
N 11° 21' W
1044.56'

D = 57.3°
I = 57° 43'
R = 100.0'
T = 55.11'
L = 100.73'
E = 14.18'

D = 4.8351°
I = 5° 45' 30"
R = 1185'
T = 59.6'
L = 119.09'
E = 1.5'

E OF EXISTING ROADBED
(15' WIDE?)

NORTH PROPERTY LINE STOVALL TRACT
PER DEED

D = 17.3624°
I = 8° 55' 30"
R = 330'
T = 25.75'
L = 51.4'
E = 10'

D = 8.8147°
I = 9° 01' 30"
R = 650.0'
T = 51.3'
L = 102.38'
E = 2.02'

576.45'
N 89° 34' 30" E
794.75'

S 81° 24' E 119.72'
42.67' RT. TO PC.

D = 0.8185°
I = 2° 44'
R = 7000'
T = 167.0'
L = 333.94'

D = 32.74°
I = 24° 17'
R = 175.0'
T = 37.65'
L = 74.17'
E =

SOUTHERLY GATE POST
(6" PIPE) N 80° E 34.5

28
33
27
34

SE COR ISAAC
KING D.L.C. #39
(STONE)

6006