

C.S. # 601

See notes in file

F.B. 24-1

#601

FB#24

(Brong-steel Co.)
Continuation, C.S. 83-

Springleaf

3.716- 3.715

8000+13' 7.999
11.714

1/2" Rod

L. 9°27' N. 57°33' 20"W
2 25' 2.120'
9' 27' 10"

874- 874

8000+290' 7.994

Oak stake

R. 6°52' N. 75°06' 10"W
2 26' 83'
R. 6°51' 20"

8000+47' 7.999

16.567

7.705-

1/2" iron pipe

R. 15°57' 30" N. 54°51' 30"W
3 71' 23' 30"
13°57' 30"

6.157-

Oak stake

L. 90°03' S. 51°05' W
2 70' 03'
23°00' 3"

6.26-

R. 90°03' N. 53°2' W
2 70' 03'
50°03'

516-

S. 51°05' W

F. Writsman, D.L.C. #50 - T. 105 R. 5 W. -

Nail in ground 606

Oak stake

3/4" S. Pipe

4 45'
2 45'
1 15'84°41'
3 26' 22' 30"
7 57' 10"90° 13'
3 27' 15"
90° 02' 40"

4.999

6.157

11.156

3/4" S. Pipe 606 Stone

2

#60 - (S. 83)
(Bar. 5.6 - P. 27)

3/4" Galv. Pipe R. 57°33'
2172.39
-103 57.33

N 53°10' W 1.346 ± 5'

5.196 ± 4.20' 5.180

1.01
5.077

set up on
smooth bar

5.180
3.077
5.077
0.3 ± 1.10'

Oak fence post - S. side road 5.180
Oak tree 6" " " " 2.05
" " 6" " " " 2.74

R. 12°19' N 63°10'10" W

Spring leaf

312.70
12.20'

2.932 ± 4.10' 2.924

5.004 ± 2.0 7.925

8.00 ± 1.35' 7.997

8.000 - 8.000

26.916

R. 8°49' N 75°30'10" W

326°26'30"
8 78.50"

5/8" Cue bolt

3.243 ± 4.0 3.239

2.573 ± 4.5 2.573

5.812

L 32°23' N 88°48' W

3197°09'
32.23'

1/2" Eye bolt

4.348 ± 1.20' 4.347

R. 23°40' N 51°56' W

371°02'
23 40'40"

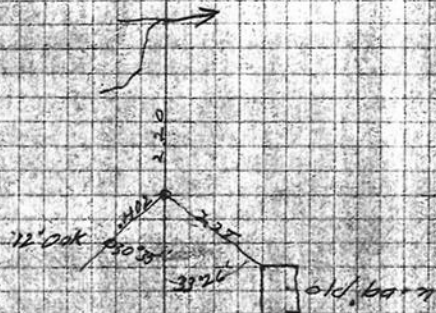
1/2" Rod

1.918 ± 1.30' 1.917

R. 11°57' N 75°36'40" W

335°50'40"
11 56'40"

Read up page



5.23 1/2" maple

10.25

7.20

3.23

1.03

30'

1.03

1.03

1.03

1.03

1.03

1.03

1.03

1.03

1.03

1.03

1.03

1.03

1.03

1.03

1.03

7.20

3.23

1.03

30'

1.03

1.03

1.03

1.03

1.03

1.03

1.03

1.03

1.03

1.03

1.03

1.03

1.03

1.03

1.03

Fence post