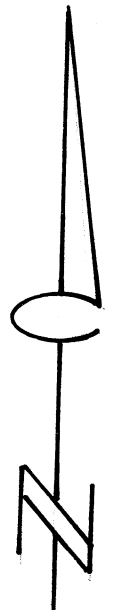


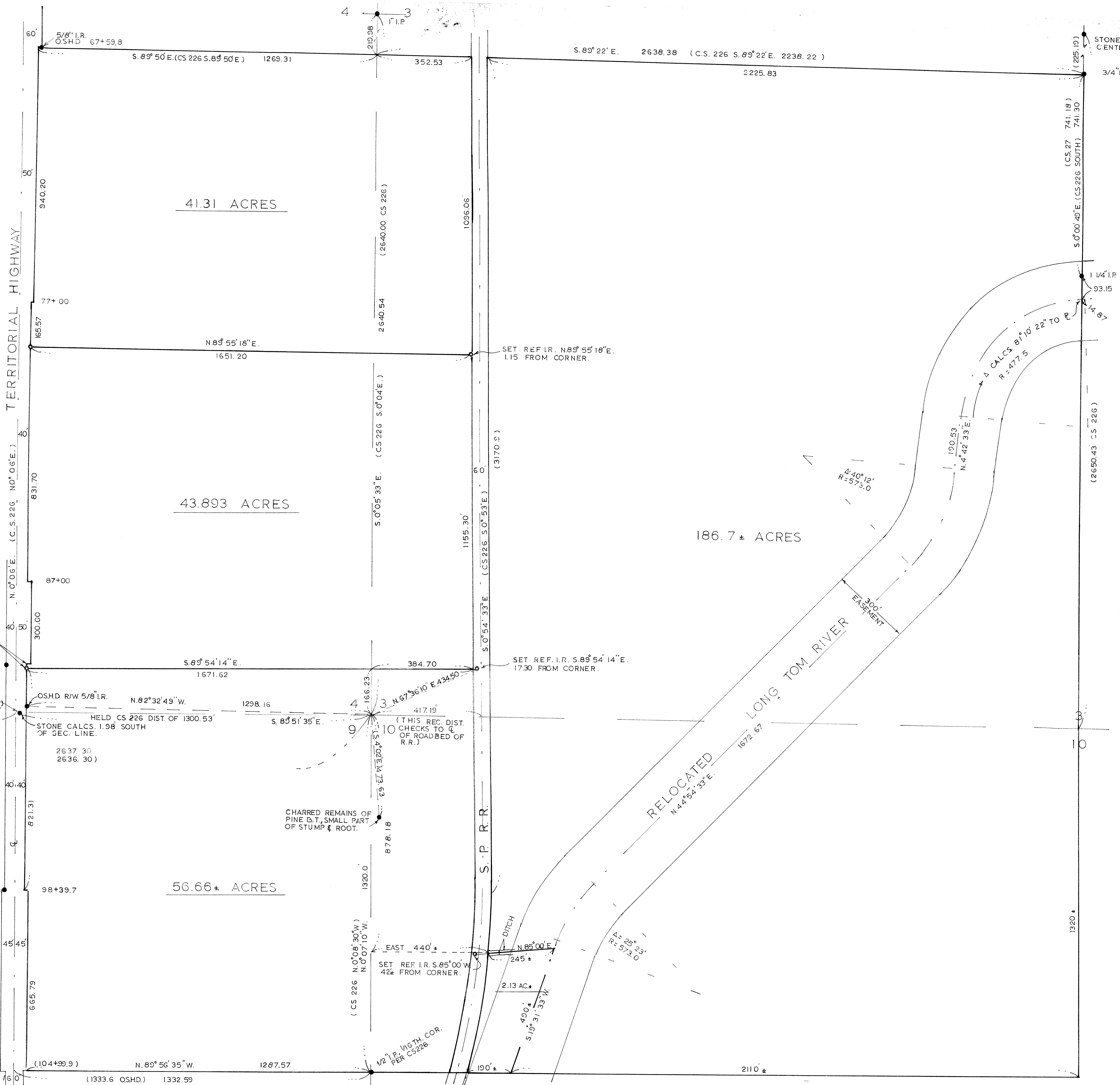
00012
DENNIS STRODA
 SECTIONS 3, 4, 9 & 10 T. 15 S. R. 5 W.W.M.
 BENTON COUNTY, OREGON
 SCALE 1"=200' JAN. 9 1975



BASIS OF BEARING FROM CS 226, AS SHOWN.

LEGEND
 ● MONUMENT FOUND
 ○ 1/2" IRON ROD SET

R.S. Castleberry
 DISTRICT CLERK
 BENTON COUNTY, OREGON



REFER SURVEY FOR PAUL HURNS DATED APRIL 28, 1969.

1/16 SEC. LINE, SEE HURNS SURVEY

2/10

202

6012