

06030

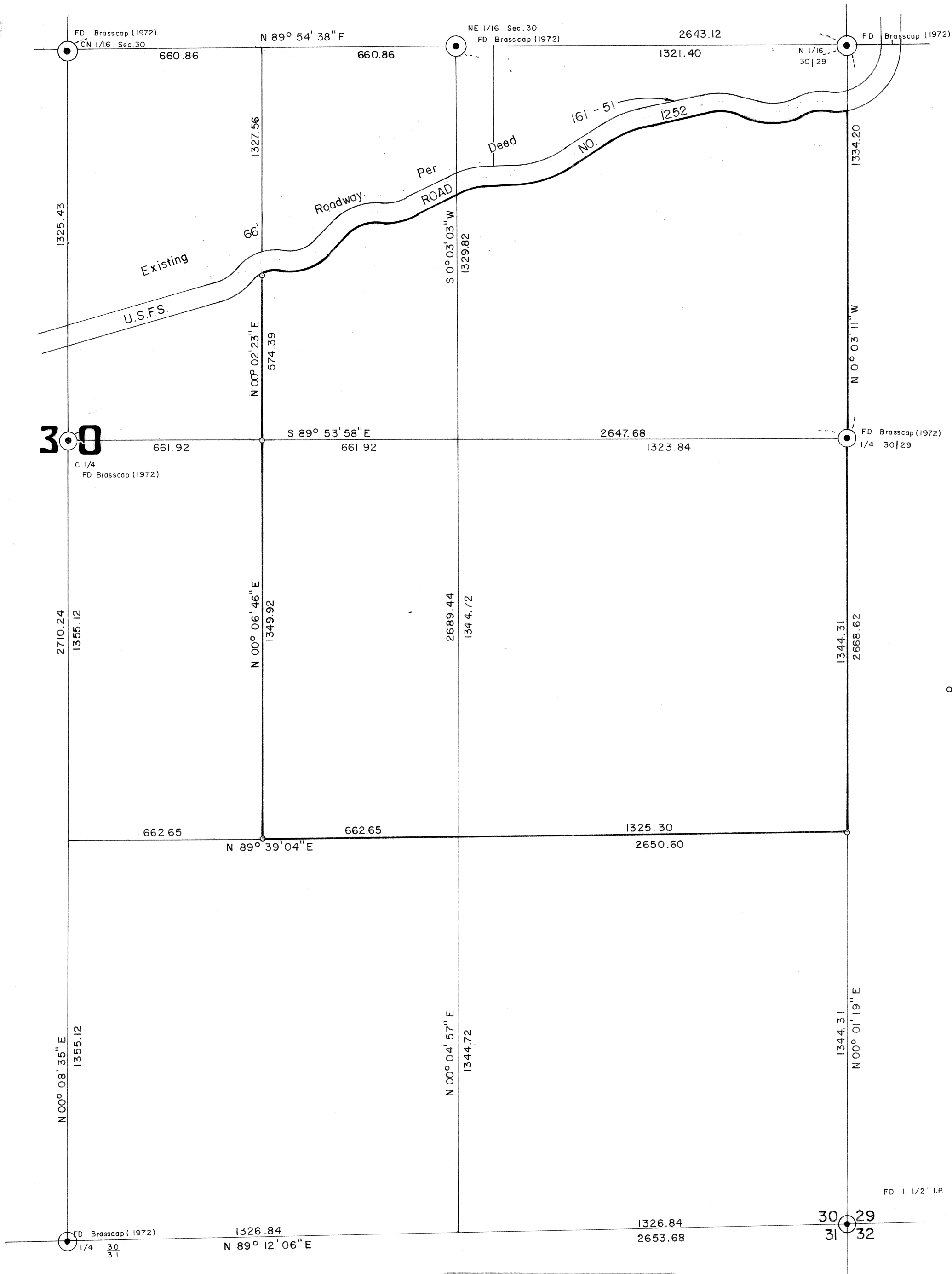
JACK MORGAN

E 1/2, SEC. 30 T. 12 S. R. 6 W

BENTON COUNTY, OREGON

Scale: 1" = 300'

December 1975



Based On
C.S. 5407

o Indicates 5/8" Rod Set

TIMBERLAND SERVICES, INC.
 1010 Airport Road P. O. Box 668
 Albany, Oregon 97321
 Telephone (503) 926-9404
 LAND SURVEYING - ENGINEERING
 LAND USE PLANNING - ROADS
 FORESTRY CONSULTING

REGISTERED
 PROFESSIONAL
 LAND SURVEYOR
Kenneth M. Wightman
 OREGON
 JULY 17, 1970
 KENNETH M. WIGHTMAN II
 942

6030

06030

6030

6030