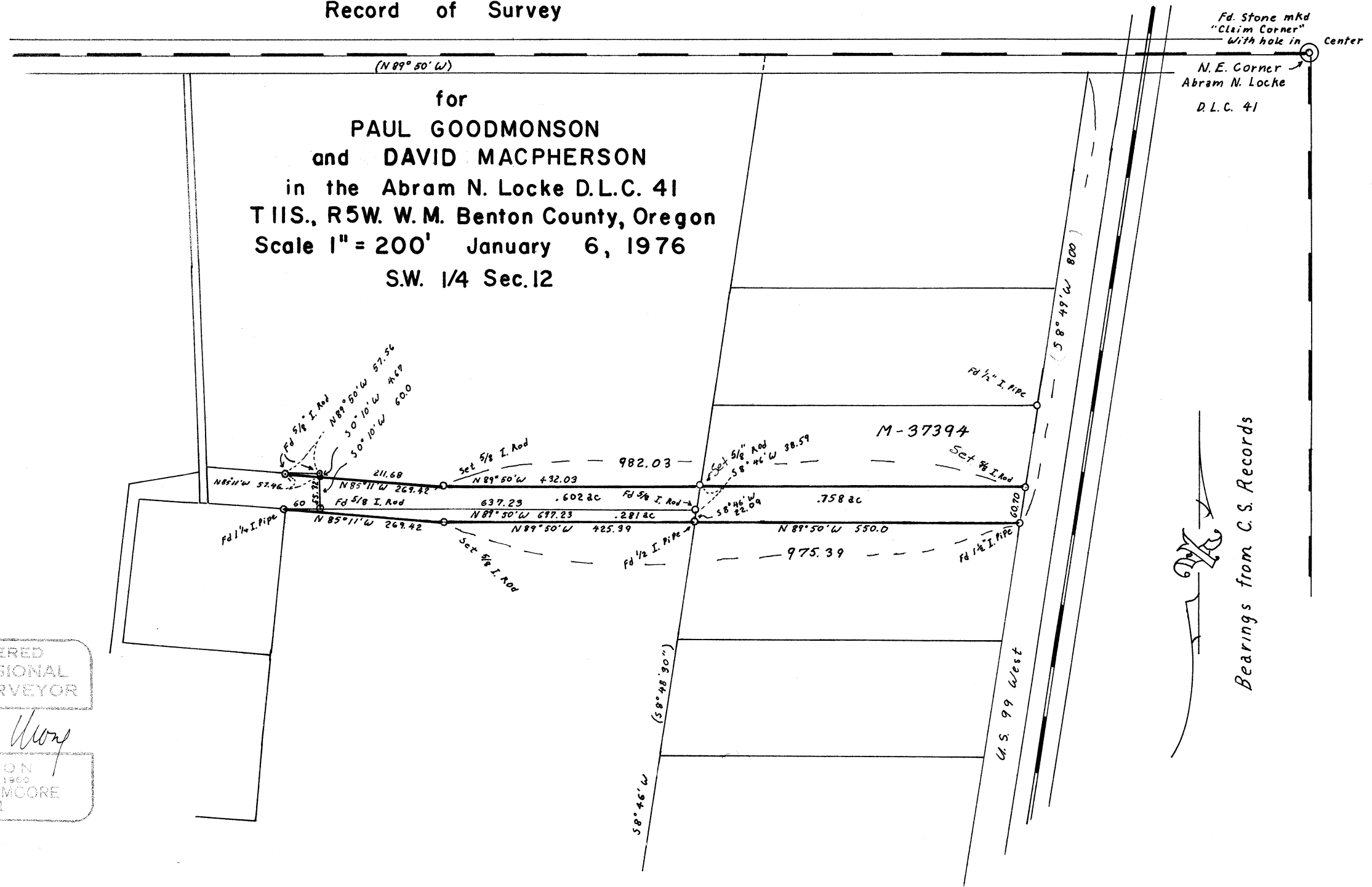


06174

Record of Survey

for
PAUL GOODMONSON
and DAVID MACPHERSON
in the Abram N. Locke D.L.C. 41
T11S., R5W. W.M. Benton County, Oregon
Scale 1" = 200' January 6, 1976
S.W. 1/4 Sec. 12

Fd. Stone mkd
"Claim Corner"
With hole in Center
N. E. Corner
Abram N. Locke
D.L.C. 41



REGISTERED
PROFESSIONAL
LAND SURVEYOR

Verle C. Moore

OREGON
MAY 15, 1960
VERLE C. MOORE
501