

6298

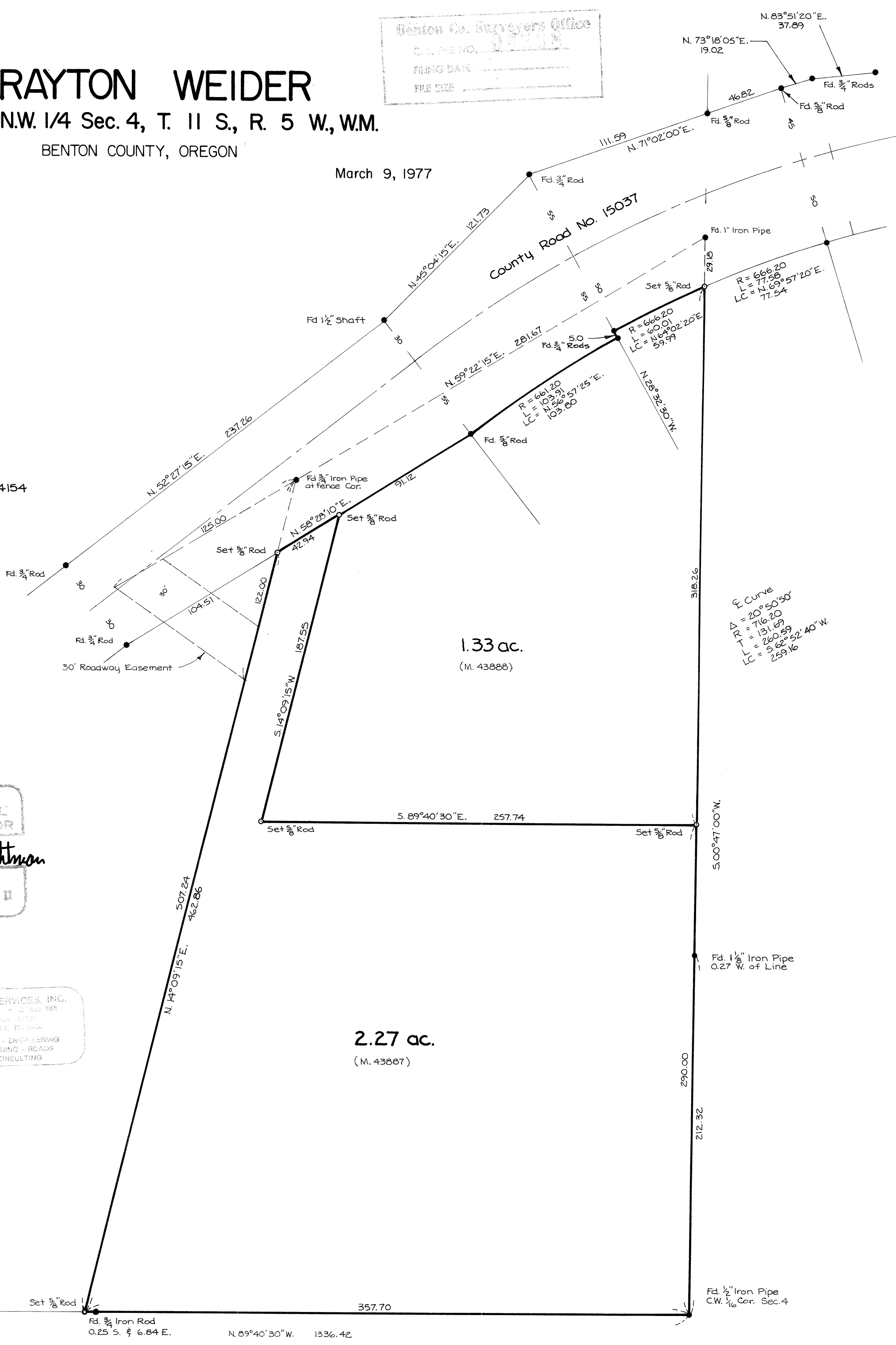
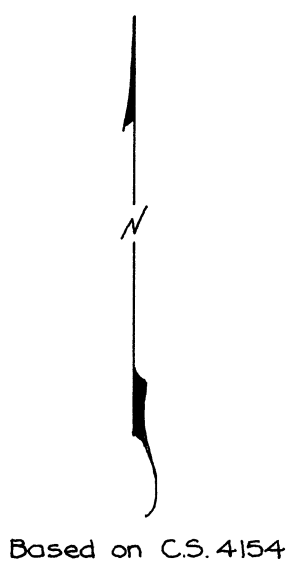
Benton Co. Surveyors Office  
C. S. FILE NO. 32222  
FILING DATE \_\_\_\_\_  
FILE SIZE \_\_\_\_\_

# BRAYTON WEIDER

S.W. 1/4 N.W. 1/4 Sec. 4, T. 11 S., R. 5 W., WM.  
BENTON COUNTY, OREGON

Scale: 1" = 50'

March 9, 1977



REGISTERED  
PROFESSIONAL  
LAND SURVEYOR  
*Kenneth M. Wightman*  
OREGON  
JULY 27, 1970  
KENNETH M. WIGHTMAN II  
942

TIMBERLAND SERVICES, INC.  
21500 NE 15th St. # 300  
Portland, OR 97230  
Telephone: (503) 253-5994  
LAND SURVEYING - ENGINEERING  
LAND USE PLANNING - ROADS  
FORESTRY CONSULTING

6298