

Map of survey for:

# C. A. Pierson

NW 1/4, Sec. 6, T12S, R5W, WM.  
Benton County, Oregon

Scale: 1" = 100'  
Job No.: 78-221

July 6, 1978  
Drw: E.N.H.

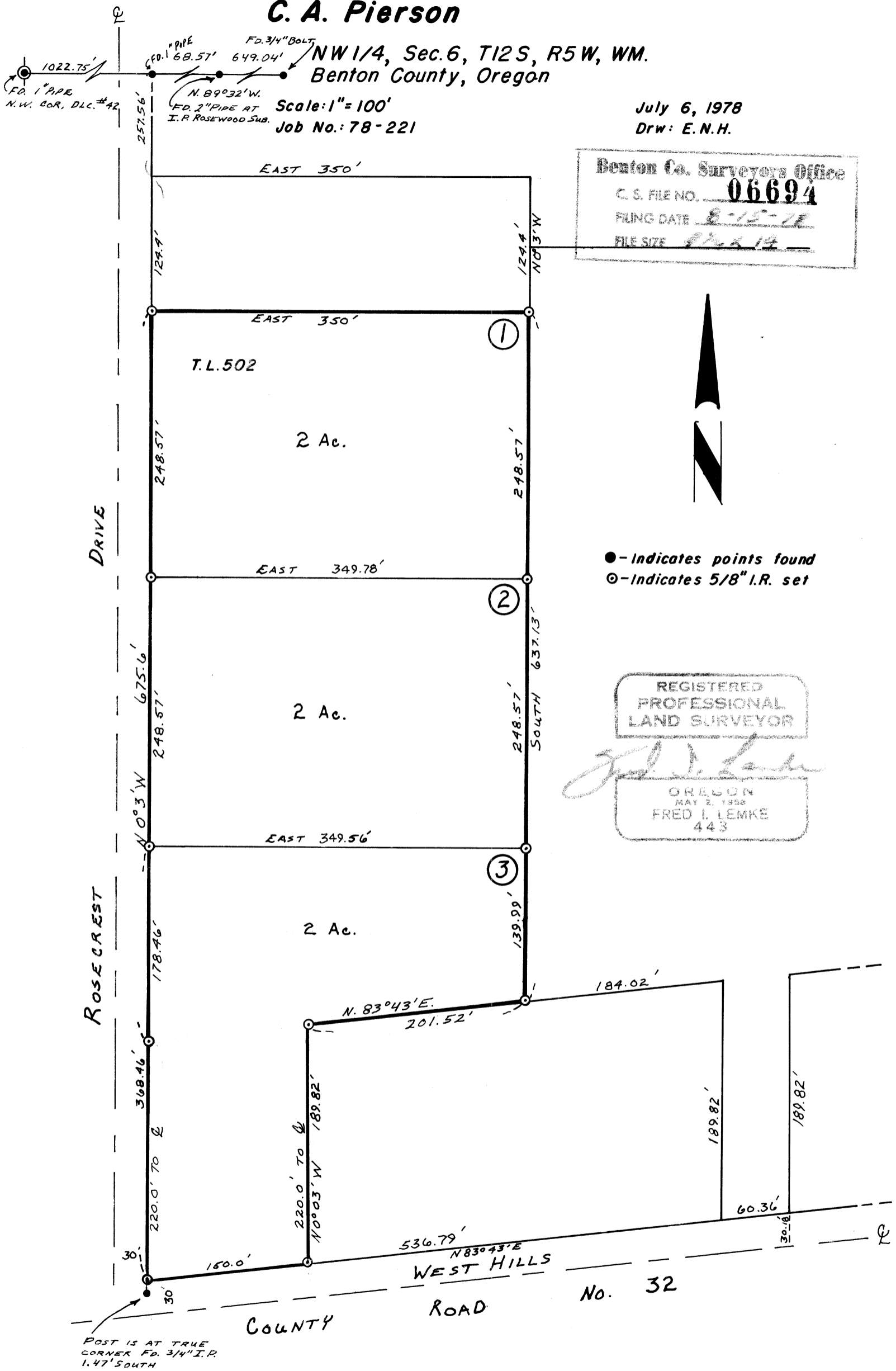
Benton Co. Surveyors Office  
 C. S. FILE NO. **06694**  
 FILING DATE 8-15-78  
 FILE SIZE 8 1/2 x 14



● - Indicates points found  
⊙ - Indicates 5/8" I.R. set

REGISTERED  
PROFESSIONAL  
LAND SURVEYOR

OREGON  
MAY 2, 1956  
FRED I. LEMKE  
443



POST IS AT TRUE CORNER FD. 3/4" I.R. 1.47' SOUTH

E.N.H.