

**SURVEY FOR
CURT WOODARD**

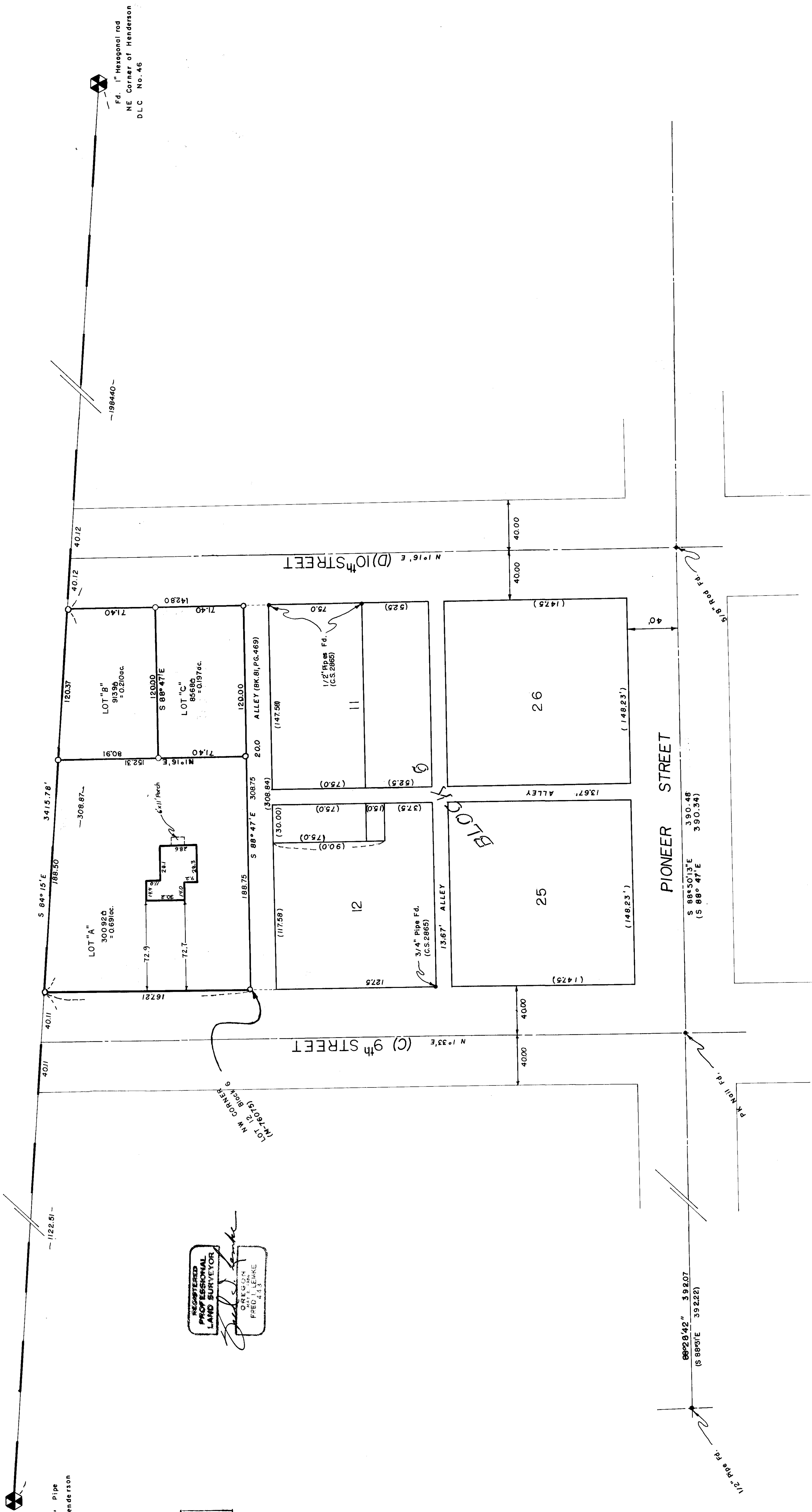
In The NW 1/4 of Sec. 12
T.12 South; R.6 West, of
the Willamette Meridian
Benton County, Oregon

Scale: 1" = 40'

April 1979 79-60
drawn by:

BASIS OF BEARING: North line of claim 46

○ = 5/8" rod set
● = monuments found as noted



Benton Co. Surveyors Office
C.S. FILE NO. 6227
PLAT DATE 6-4-79
FILE SIZE 25.5 x 39"

**REGISTERED
PROFESSIONAL
LAND SURVEYOR**
Richard L. Kunkle
D.L.C. No. 224
F.P.E.C. 4,13