

RECORD OF SURVEY
 FOR
 LOWELL D. AND THELMA HUGHES
 T12S R6W
 SE 1/4 OF SEC. 22 AND SW 1/4 OF SEC. 23, W.M.
 ROBERT SHIPLEY DLC NO. 59
 BENTON COUNTY, OREGON
 JULY 3, 1979

6942
 7-13-79
 18" x 24" di
 Ben T. Andrews

SW COR. DLC 52 &
 NW COR. DLC 55
 Fd. 3/8" I.R.

SCALE 1" = 100'
 BASIS OF BEARINGS:
 1963 COUNTY SURVEY
 OF R/W FOR EVERGREEN
 ROAD NO. 26290

Rd. Sta. 73+31.27
 E.C.

D = 20°
 Δ = 89°-53'
 R = 286.48'
 T = 285.90'
 L = 449.42'

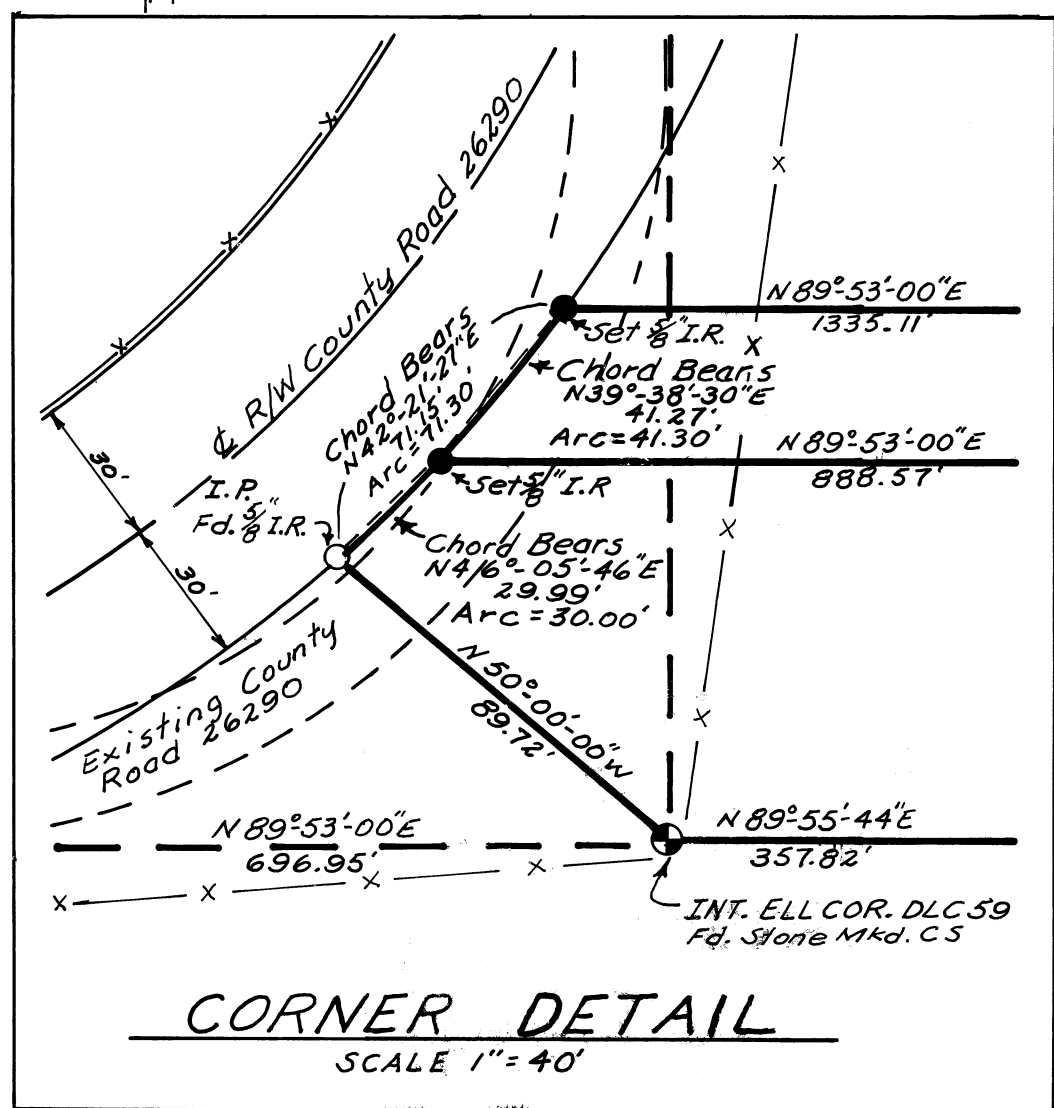
NOTE
 See Corner Detail

Initial Point
 of Survey

INT. ELL COR. DLC 59
 Fd. Stone Mkd. CS

20.00 Acres

20.00 Acres



CORNER DETAIL
 SCALE 1" = 40'

