

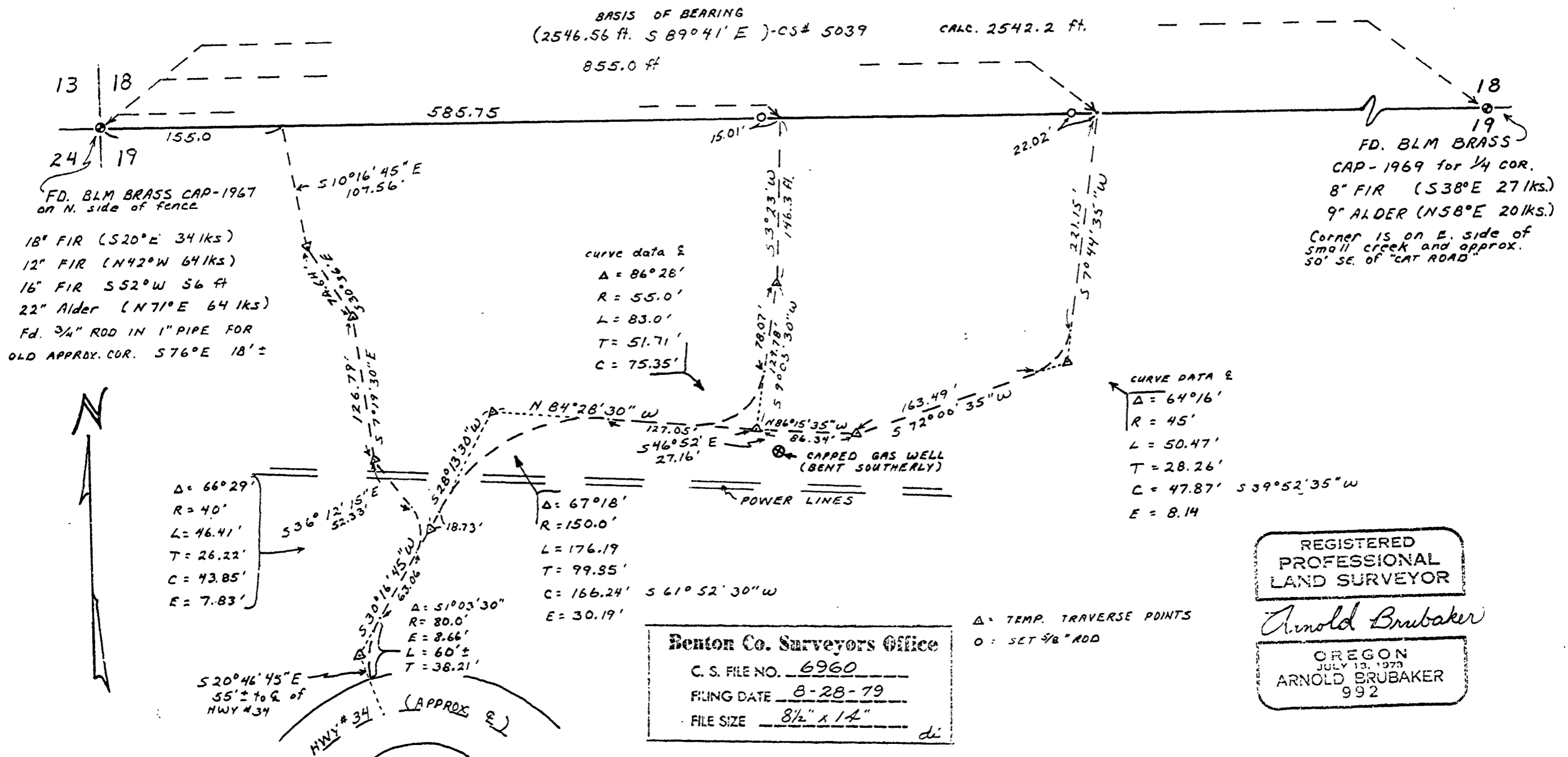
0960

# MILLER-STARKER FORESTS

NW 1/4, SECTION 19, T.14S., R.8W.  
BENTON COUNTY, ORE.

SCALE: 1" = 100' JULY 25, 1979

BERT W. UDELL R.L.S.# 1365  
BY ARNOLD BRUBAKER R.L.S.# 992



0960