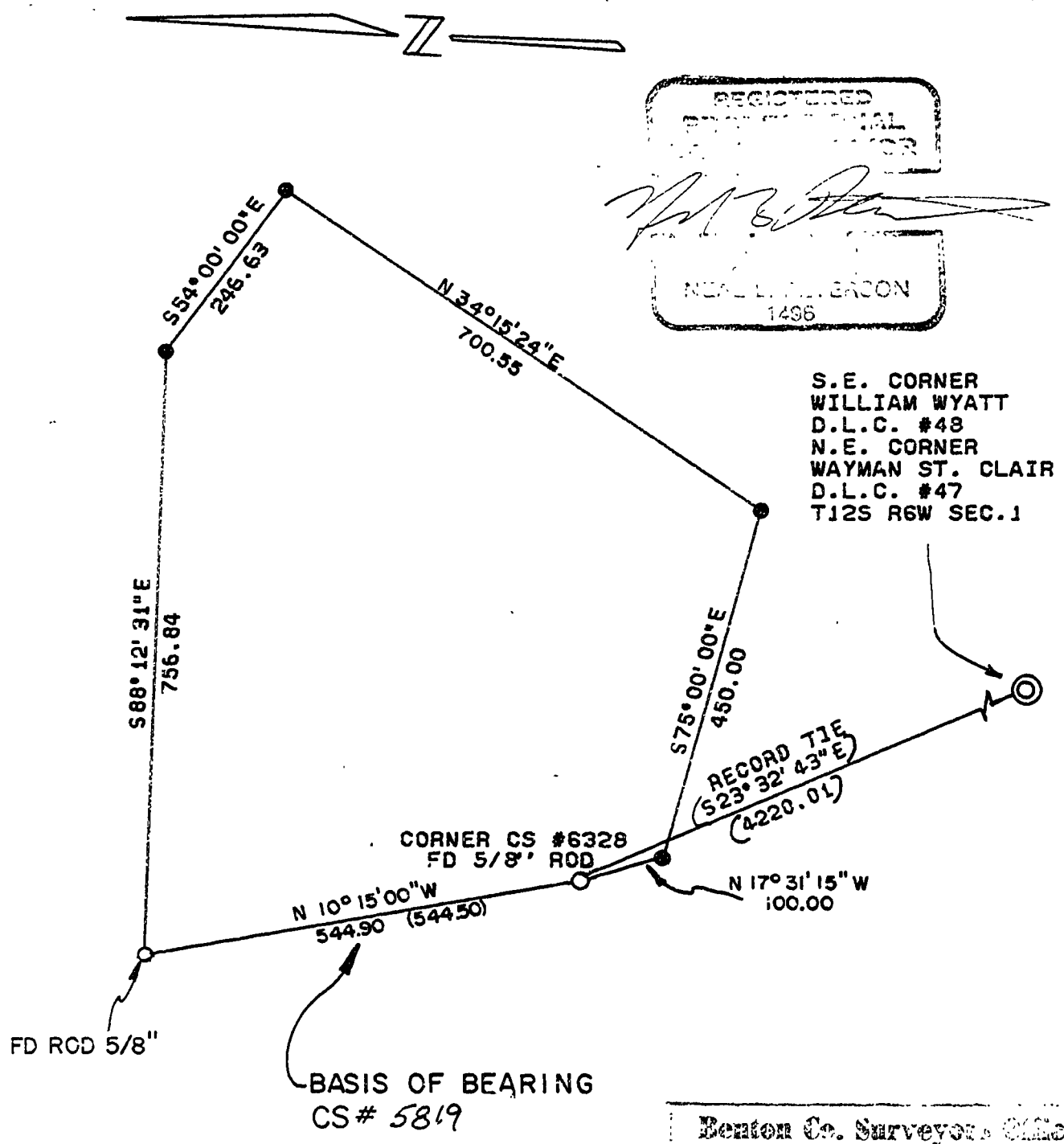


# SURVEY FOR ROBERT L. RICHARDS

IN S.E. 1/4, SEC. 36, T 11 S, R 6 W, W.M.  
JANUARY 31, 1980

SCALE: 1" = 200'      SET 5/8" ROD •



RODS WERE SET RADially FROM  
RANDOM TRAVERSE POINTS USING  
ELECTRONIC MEASURING DEVICE.

Benton Co. Surveyors Office	
C. S. FILE NO.	7036
FILING DATE	2-11-80
FILE SIZE	8 1/2" x 14"