

MINOR LAND PARTITION SURVEY
for STEVE LAWTON
in NE 1/4, Sec. 30, T12S, R5W, W.M.
BENTON COUNTY, OREGON
MARCH 28, 1980 SCALE: 1" = 50'

by NORTHSTAR SURVEYING, INC.
402 NW 5TH ST.
Corvallis, OR 97330

7060
4-2-80
8 1/2" x 14"

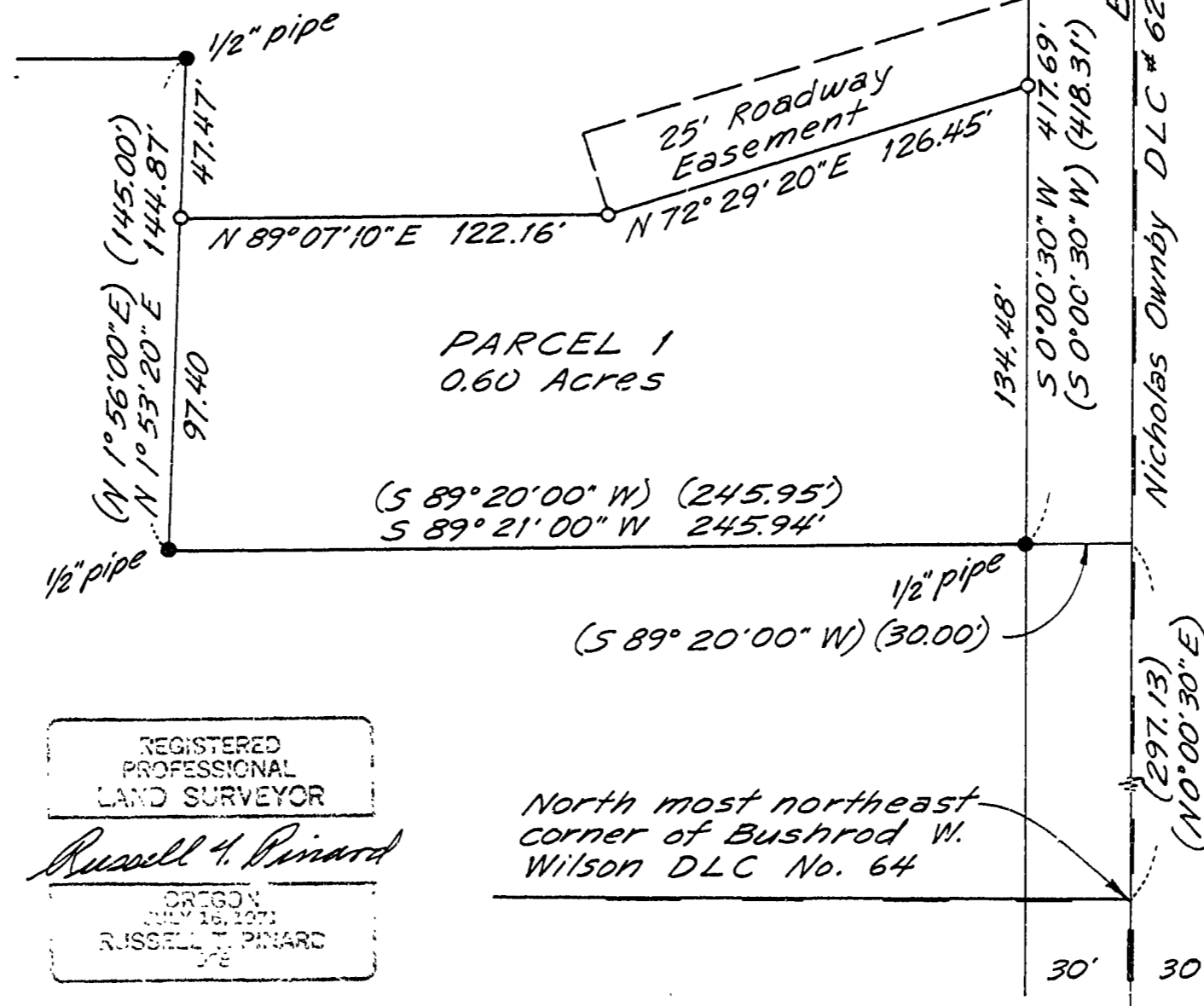
LEGEND

- Found monument
- Set 5/8" x 30" rebar
- () Record data, from C.S. #45 & deeds
- DLC line

NARRATIVE

Surveyed with 20 sec. theodolite and 300' chain. The three corners were set arbitrarily so that the east and west corners are on line between the found corners.

PARCEL 2
40 Acres ±



REGISTERED
PROFESSIONAL
LAND SURVEYOR

Russell A. Pinard

OREGON
JULY 16, 1971
RUSSELL A. PINARD