

PLAN HOLD CORPORATION • IRVINE, CALIFORNIA
REORDER BY NUMBER 07587

PLAN HOLD CORPORATION • IRVINE, CALIFORNIA
REORDER BY NUMBER 07588

PLAN HOLD CORPORATION • IRVINE, CALIFORNIA
REORDER BY NUMBER 07589

PLAN HOLD CORPORATION • IRVINE, CALIFORNIA
REORDER BY NUMBER 07590

PLAN HOLD CORPORATION • IRVINE, CALIFORNIA
REORDER BY NUMBER 07591

PLAN HOLD CORPORATION • IRVINE, CALIFORNIA
REORDER BY NUMBER 07592

LEGEND:

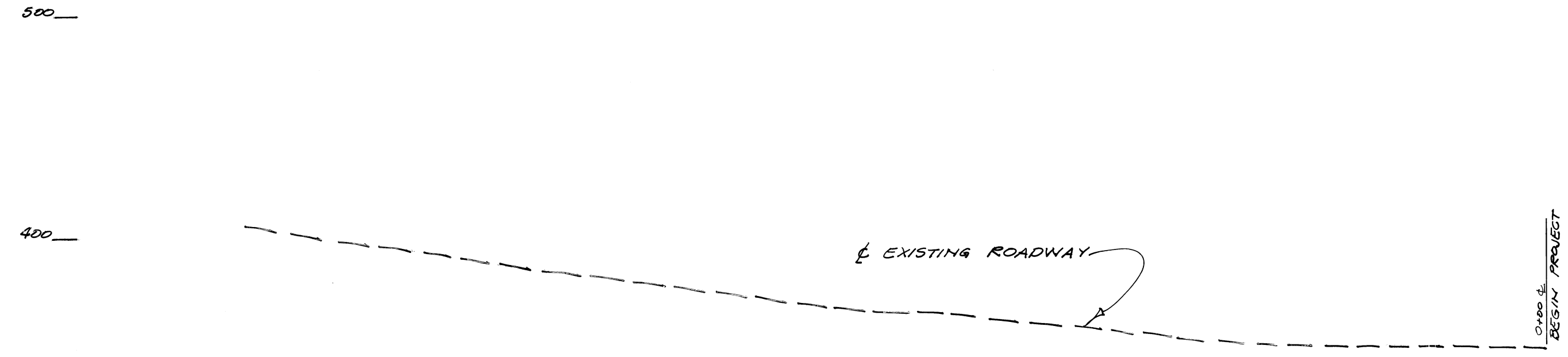
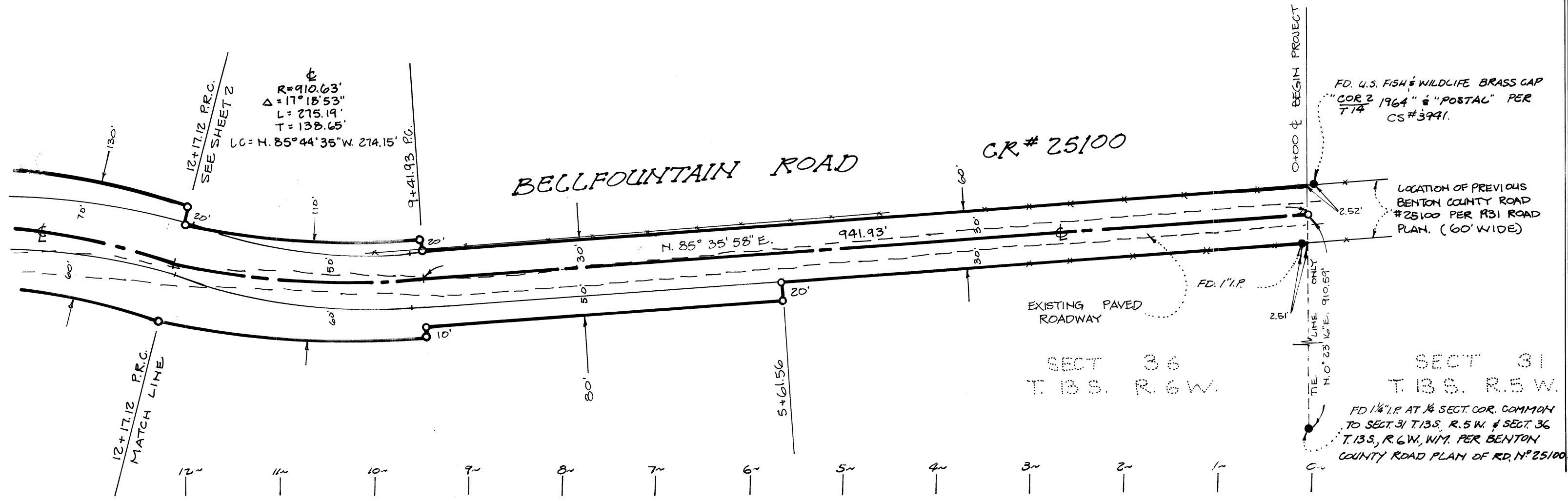
- MONUMENTS FOUND AS NOTED
- SET 3/8" DIA IRON ROD, 30" LONG.
- () RECORD INFORMATION PER BENTON COUNTY 1931 ROAD PLAN OF CO. RD #25100 (RT 1 SECT 576 PER OLD SYSTEM)
- PC POINT OF CURVATURE
- PT POINT OF TANGENCY
- PRL POINT OF REVERSE CURVATURE
- POL POINT ON CURVE
- POT POINT ON TANGENT
- IP IRON PIPE
- EXISTING PAVED ROADWAY

NARRATIVE:

THIS SURVEY IS LOCATED IN SECTIONS 1 & 12 OF T.14S, R.6W, AND SECTION 36 OF T.13S, R.6W, AND WAS COMPLETED ON AUGUST 19, 1980. A RANDOM TRAVERSE, LOCATING THE PHYSICAL BOUNDARIES OF BELLFOUNTAIN ROAD, WAS CONDUCTED AND TIED TO SEVERAL MONUMENTS AS SHOWN HEREIN. THAT PORTION OF THE EAST LINE OF THE ORRIN BELKNAP D.L.C. #56 BETWEEN THE MONUMENTS SHOWN HEREIN WAS USED AS THE BASIS OF BEARINGS. RIGHT-OF-WAY, ENCOMPASSING THE EXTENT OF BELLFOUNTAIN ROAD, WAS THEN CALCULATED AND MONUMENTS SET (BY RADIAL-STAKE-OUT) FROM THE RANDOM TRAVERSE.

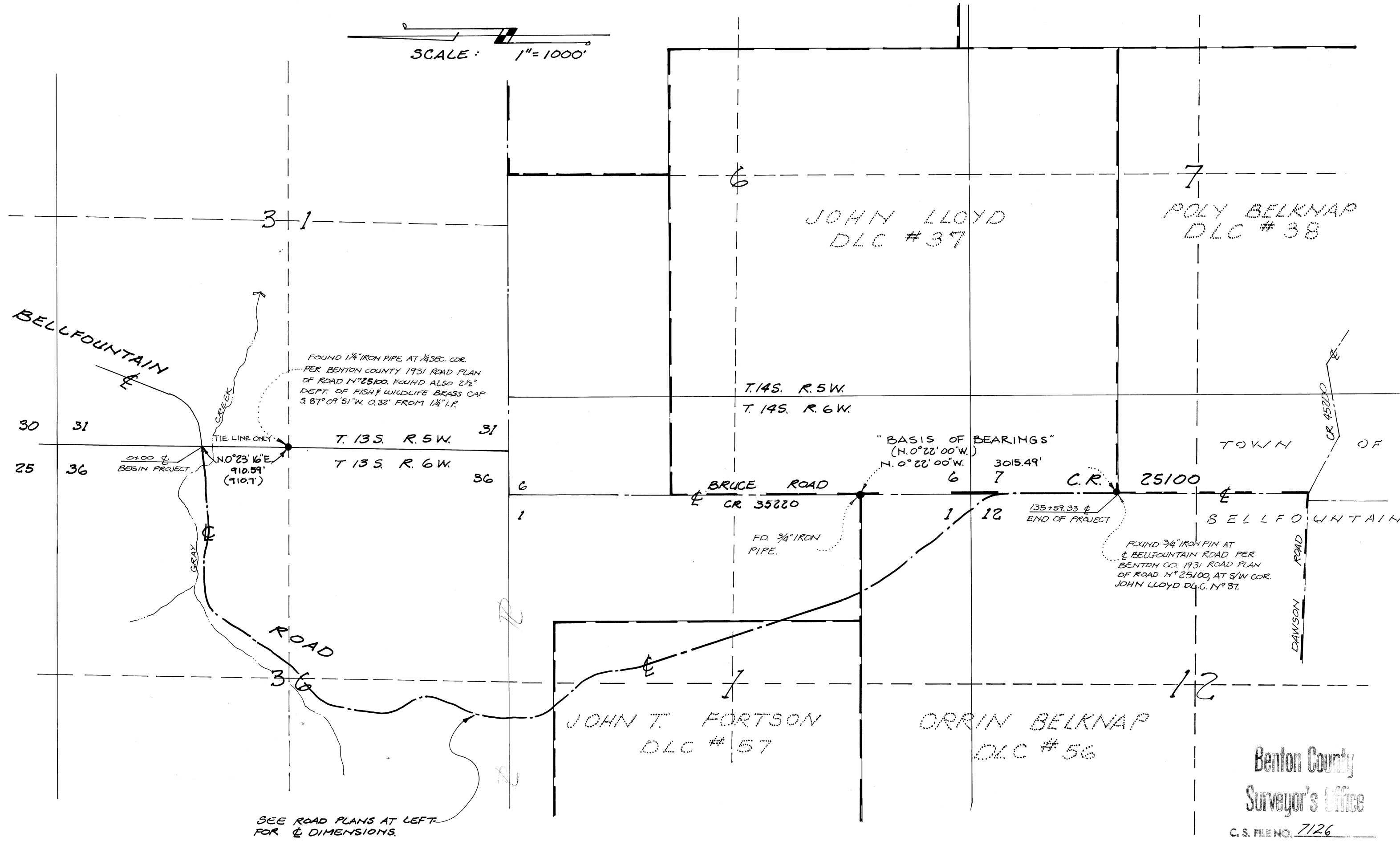
SCALE: 1" = 100'

REGISTERED PROFESSIONAL SURVEYOR
JAMES E. BLAIR
No. 1234



BENCHMARK:
ELEVATIONS FOR THE PROFILE SHOWN HEREIN WERE ESTABLISHED FROM B.C.B.M. "POSTAL" LOCATED 30' RT. OF & NEAR STA 0+00
EL. 398.65'

SCALE:
HORIZ: 1" = 100'
VERT: 1" = 50'



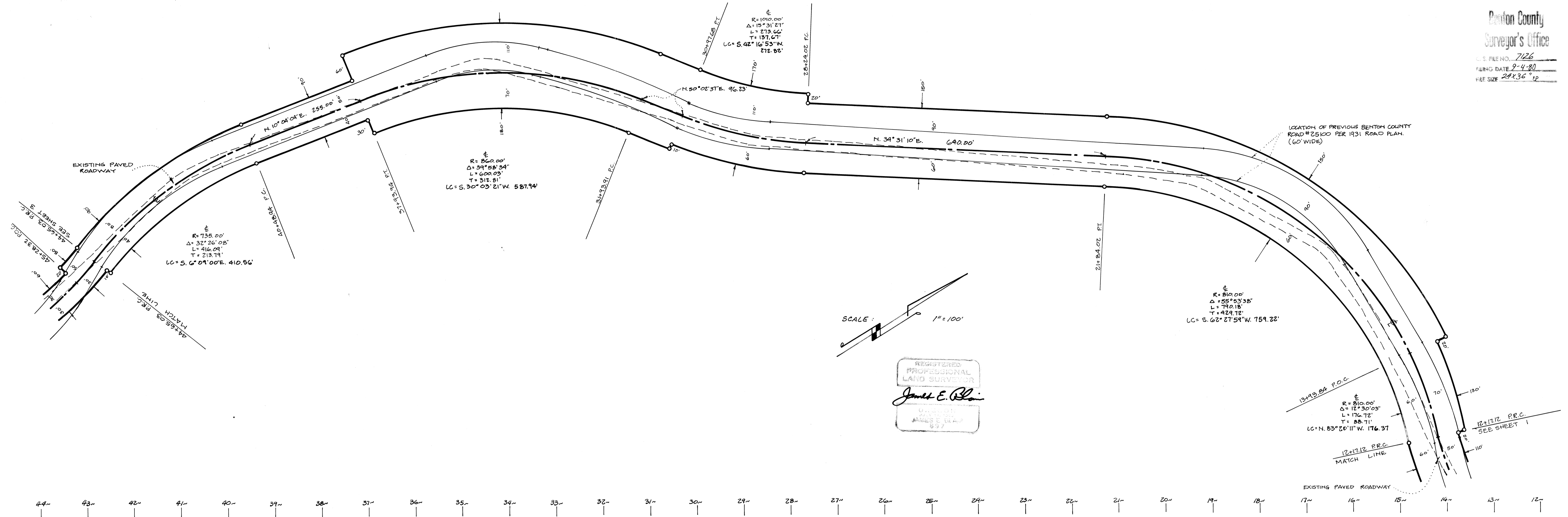
VICINITY MAP & MONUMENT TIES

Benton County
Surveyor's Office
C. S. FILE NO. 7126
FILING DATE 3-4-1980
FILE SIZE 24 x 36" e

BENTON COUNTY PUBLIC WORKS DEPARTMENT			
BELLFOUNTAIN ROAD CO. R.D. # 25100			
SECT. 1 & NE 1/4 SECT. 12 T.14S, R.6W. SECT. 36 T.13S, R.6W.			
DIRECTOR: JIM BLAIR	DESIGNED BY: J. RINALDI		
SCALE: 1" = 100'	DRAWN BY: J. RINALDI		
SHEET 1 OF 5	DATE: 8-16-80	CHECKED BY: D. INGRAM	
NO.	REVISIONS	DATE	

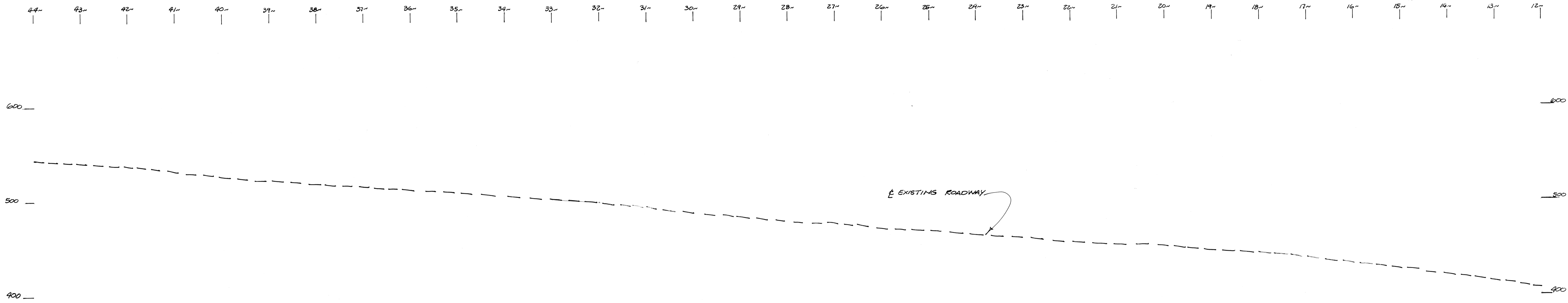
JAMES BLAIR
BENTON COUNTY SURVEYOR
360 SW AVERY
CORVALLIS, OREGON 97330

Benton County
Surveyor's Office
U.S. FILE NO. 7226
FILING DATE 2-4-80
FILE SIZE 24x36" 1P



SCALE: $1'' = 100'$

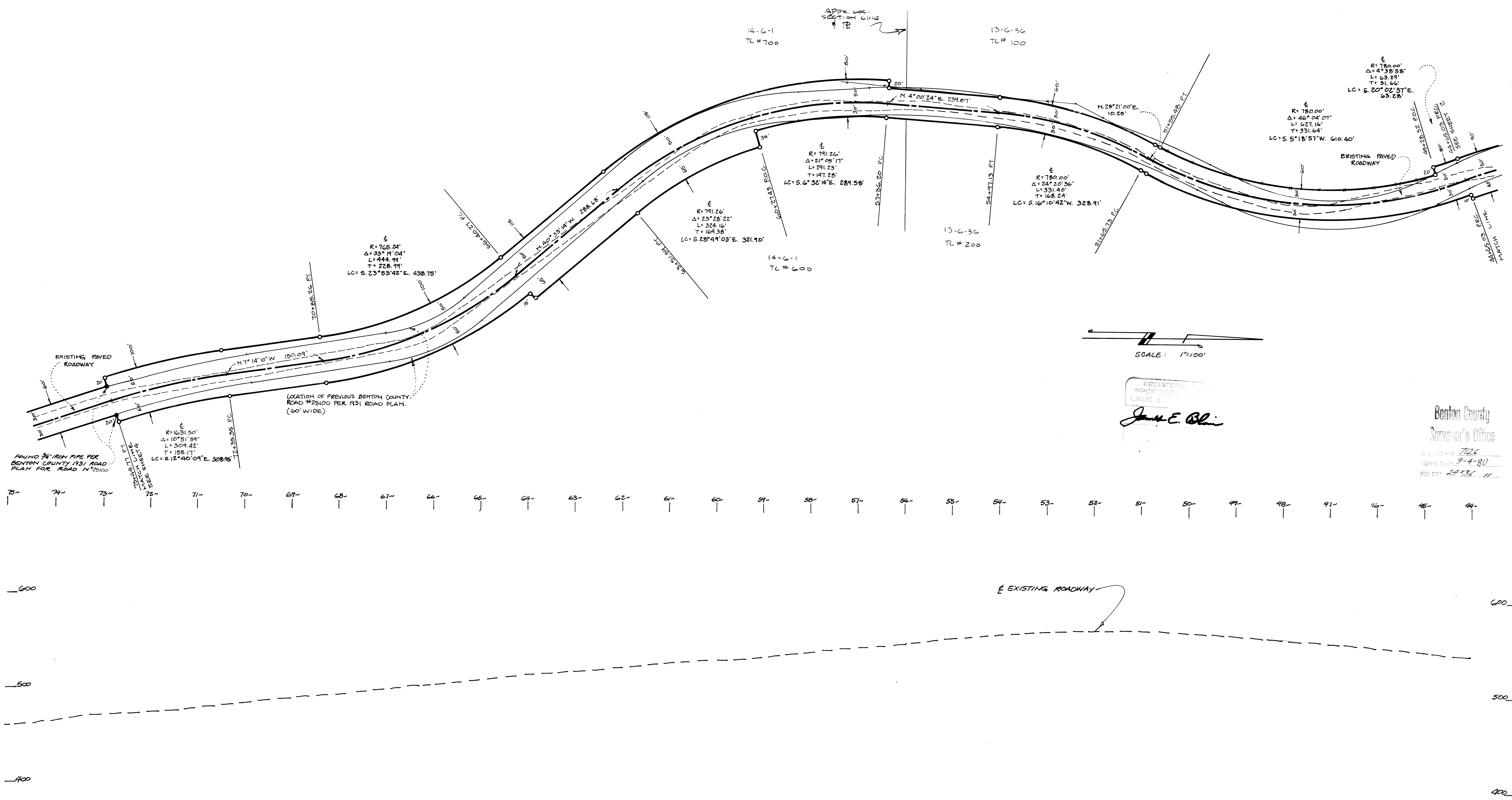
REGISTERED PROFESSIONAL LAND SURVEYOR
James E. Blair
JAMES E. BLAIR
637



SCALE:
HORIZ: $1'' = 100'$
VERT: $1'' = 50'$

JAMES BLAIR
BENTON COUNTY SURVEYOR
360 SW AVERY
CORVALLIS, OREGON 97330

BENTON COUNTY PUBLIC WORKS DEPARTMENT			
BELLFOUNTAIN ROAD CO. RD. # 25100			
SECT. 1 & NE. 1/4 SECT. 12 T. 4S., R. 6W. SECT. 36 T. 13S., R. 6W.			
DIRECTOR:	JIM BLAIR	DESIGNED BY:	J. RINALDI
SCALE:	$1'' = 100'$	DRAWN BY:	J. RINALDI
SHEET	2 OF 5	DATE:	8-16-80
NO.	REVISIONS	CHECKED BY:	D. INSERM
		DATE:	



SCALE:
HORIZ: 1"=100'
VERT: 1"=50'

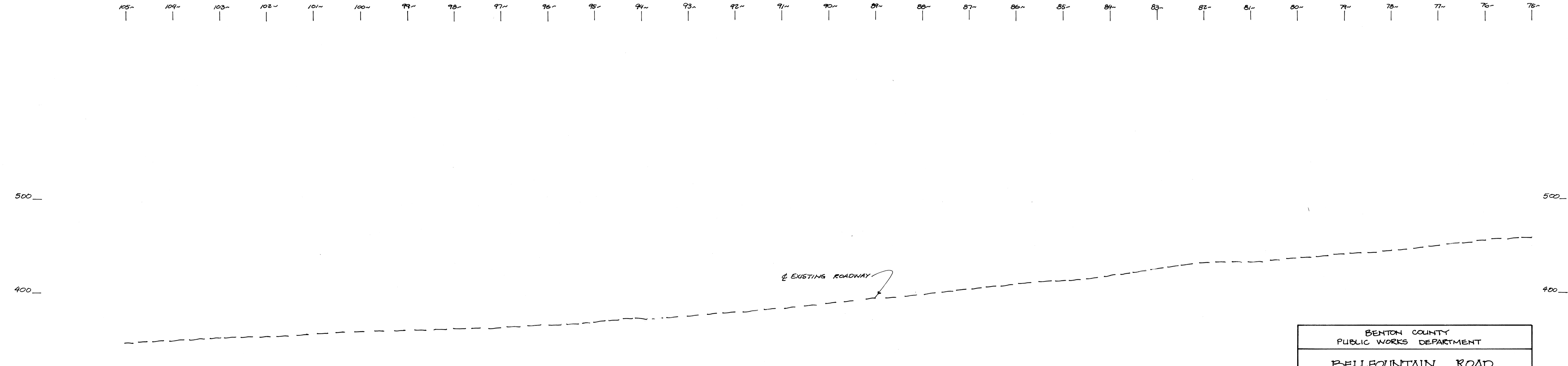
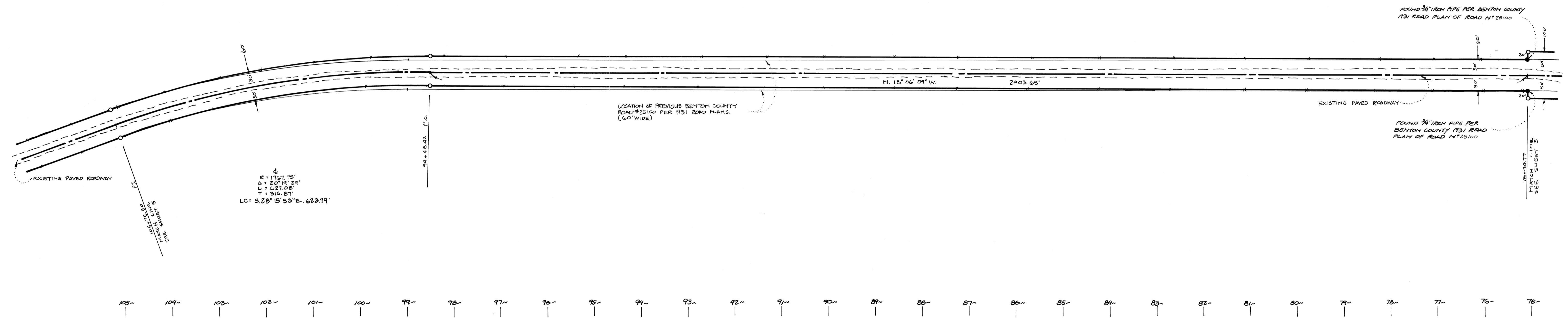
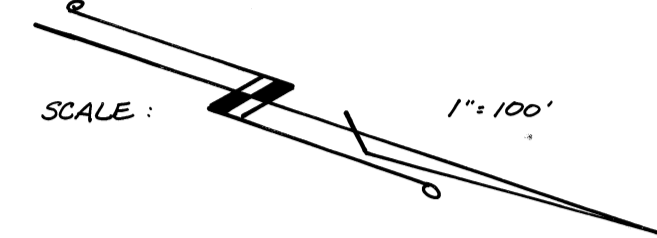
JAMES BLAIR
BENTON COUNTY SURVEYOR
360 SW AVERY
CORVALLIS, OREGON 97330

BENTON COUNTY PUBLIC WORKS DEPARTMENT			
BELLFOUNTAIN ROAD C.O.R.D. # 25100			
SECT. 1 & N.E. ¼ SECT. 12 T. 14 S., R. 6 W. SECT. 36 T. 13 S., R. 6 W.			
DIRECTOR	JIM BLAIR	DESIGNED BY	J. RINALDI
SCALE	1"=100'	DRAWN BY	J. RINALDI
SHEET	3 OF 5	DATE	8-16-80
CHECKED BY	D. INGERSOLL	CHECKED BY	D. INGERSOLL
NO.		REVISIONS	DATE

Benton County
Surveyor's Office

C.S. NO. 7126
PLANS DATE 8-4-80
FILE NO. 24X36-2

REGISTERED
PROFESSIONAL
LAND SURVEYOR
James E. Blair
JAMES E. BLAIR
837



SCALE:
HORIZ: 1" = 100'
VERT: 1" = 50'

JAMES BLAIR
BENTON COUNTY SURVEYOR
360 SW AVERY
CORVALLIS, OREGON 97330

BENTON COUNTY PUBLIC WORKS DEPARTMENT		
BELLFOUNTAIN ROAD CO. RD. # 25100		
SECT. 1 & N.E. 1/4 SECT. 12 T. 14S, R. 6W. SECT. 36 T. 13S, R. 6W.		
DIRECTOR: JIM BLAIR	DESIGNED BY: J. RINALDI	
SCALE: 1" = 100'	DRAWN BY: J. RINALDI	
SHEET 4 OF 5	DATE: 8-4-80	CHECKED BY: D. HISEAM
NO.	REVISIONS	DATE

DRAWING NUMBER
7150 (2)

DRAWING NUMBER
7150 (1)

DRAWING NUMBER
7150 (2)

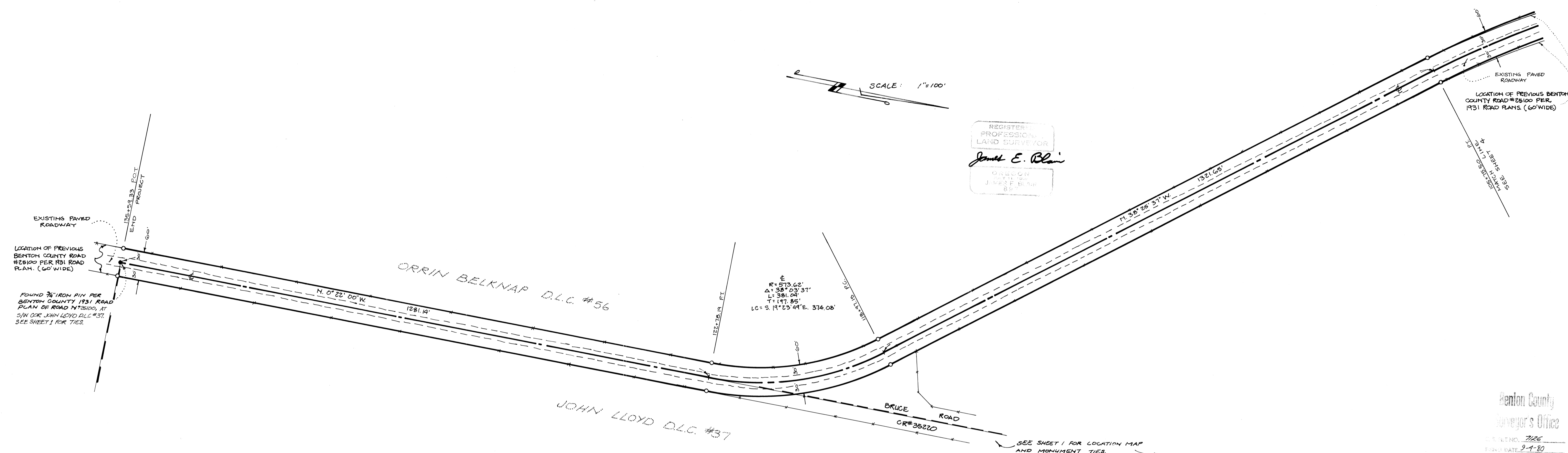
DRAWING NUMBER
7150 (2)

DRAWING NUMBER
7150 (2)

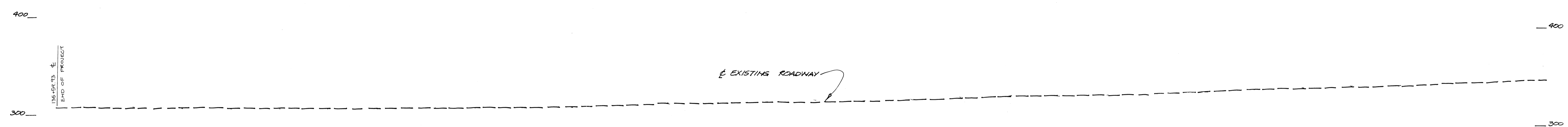
DRAWING NUMBER
7150 (2)

SCALE: 1"=100'

REGISTERED PROFESSIONAL LAND SURVEYOR
James E. Blair
DALLAS, TEXAS
JAMES E. BLAIR
85



135- 134- 133- 132- 131- 130- 129- 128- 127- 126- 125- 124- 123- 122- 121- 120- 119- 118- 117- 116- 115- 114- 113- 112- 111- 110- 109- 108- 107- 106- 105-



SCALE:
HORIZ. 1"=100'
VERT. 1"=50'

JAMES BLAIR
BENTON COUNTY SURVEYOR
360 SW AVERY
CORVALLIS, OREGON 97330

BENTON COUNTY PUBLIC WORKS DEPARTMENT			
BELLFOUNTAIN ROAD CO. RD. # 25100 SECT 1 & NE ¼ SECT 12 T.14S, R.6W. SECT 36 T.13S, R.6W.			
DIRECTOR: JIM BLAIR	DESIGNED BY: J. RINALDI		
SCALE: 1"=100'	DATE: 8-16-80	DRAWN BY: J. RINALDI	
SHEET 5 OF 5	NO.	CHECKED BY: D. INGRAM	DATE

Benton County
Surveyor's Office
U.S. PLANO. 7266
PROJ. DATE: 9-1-80
244.32.10