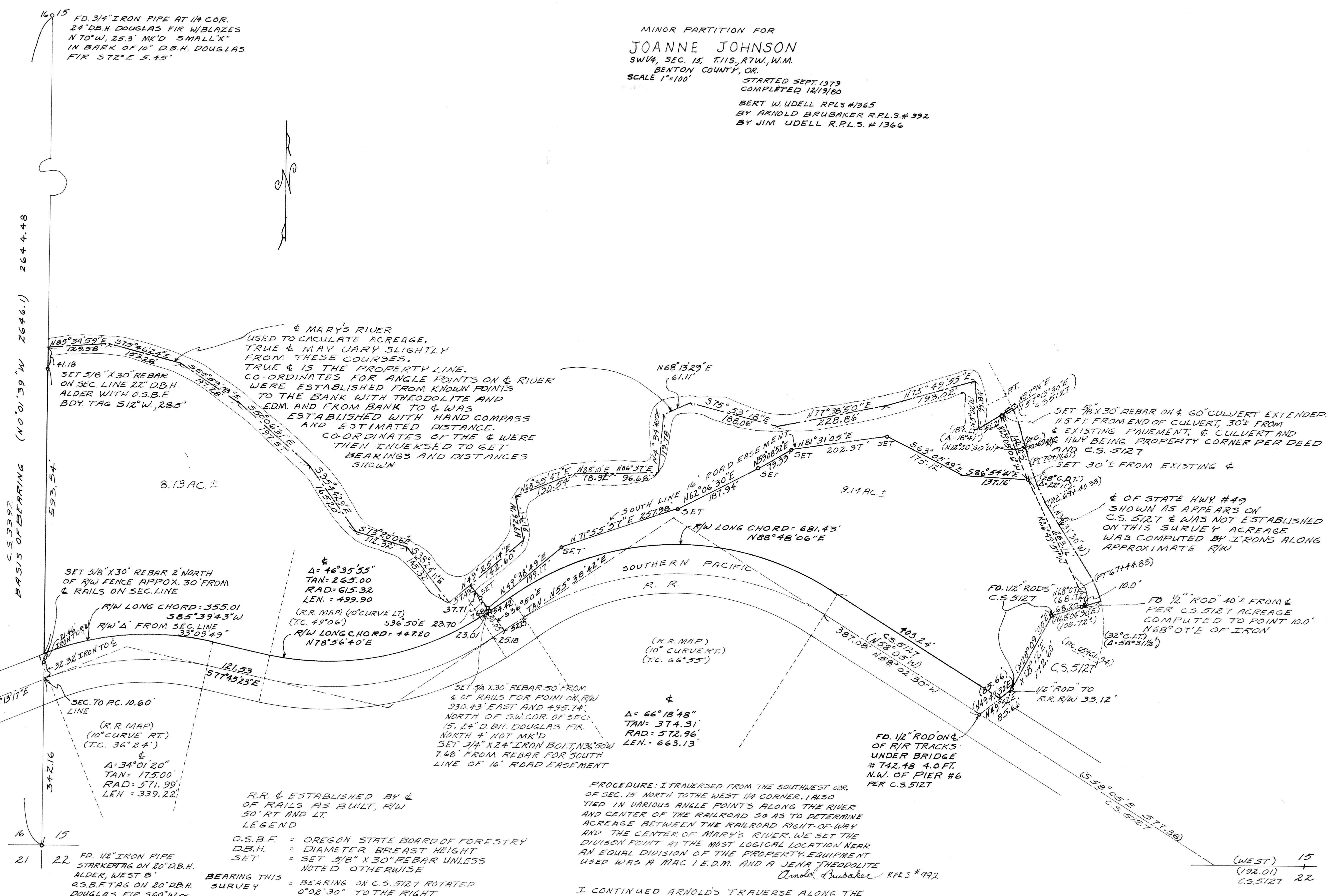


MINOR PARTITION FOR  
**JOANNE JOHNSON**  
 SW 1/4, SEC. 15, T.11S, R.7W, W.M.  
 BENTON COUNTY, OR.  
 SCALE 1"=100'

STARTED SEPT 1979  
 COMPLETED 12/19/80  
 BY BERT W. UDELL R.P.L.S. #1365  
 BY ARNOLD BRUBAKER R.P.L.S. #392  
 BY JIM UDELL R.P.L.S. #1366



Bert W. Udell  
 PROFESSIONAL SURVEYOR  
 OREGON  
 SEPTEMBER 1979  
 BERT W. UDELL  
 1965

Benton County  
 Surveyor's Office

7153  
 PLUMB DATE 1/5/80  
 FILE NO. 22-36

Jim Udell R.P.L.S. #1366