

7208

DRAWING NUMBER

PLAN HOLD CORPORATION • IRVINE, CALIFORNIA

REORDER BY NUMBER 075AR

POSITION EDGE OF PRINT ON THIS LINE

DRAWING NUMBER

PLAN HOLD CORPORATION • IRVINE, CALIFORNIA

REORDER BY NUMBER 075AR

POSITION EDGE OF PRINT ON THIS LINE

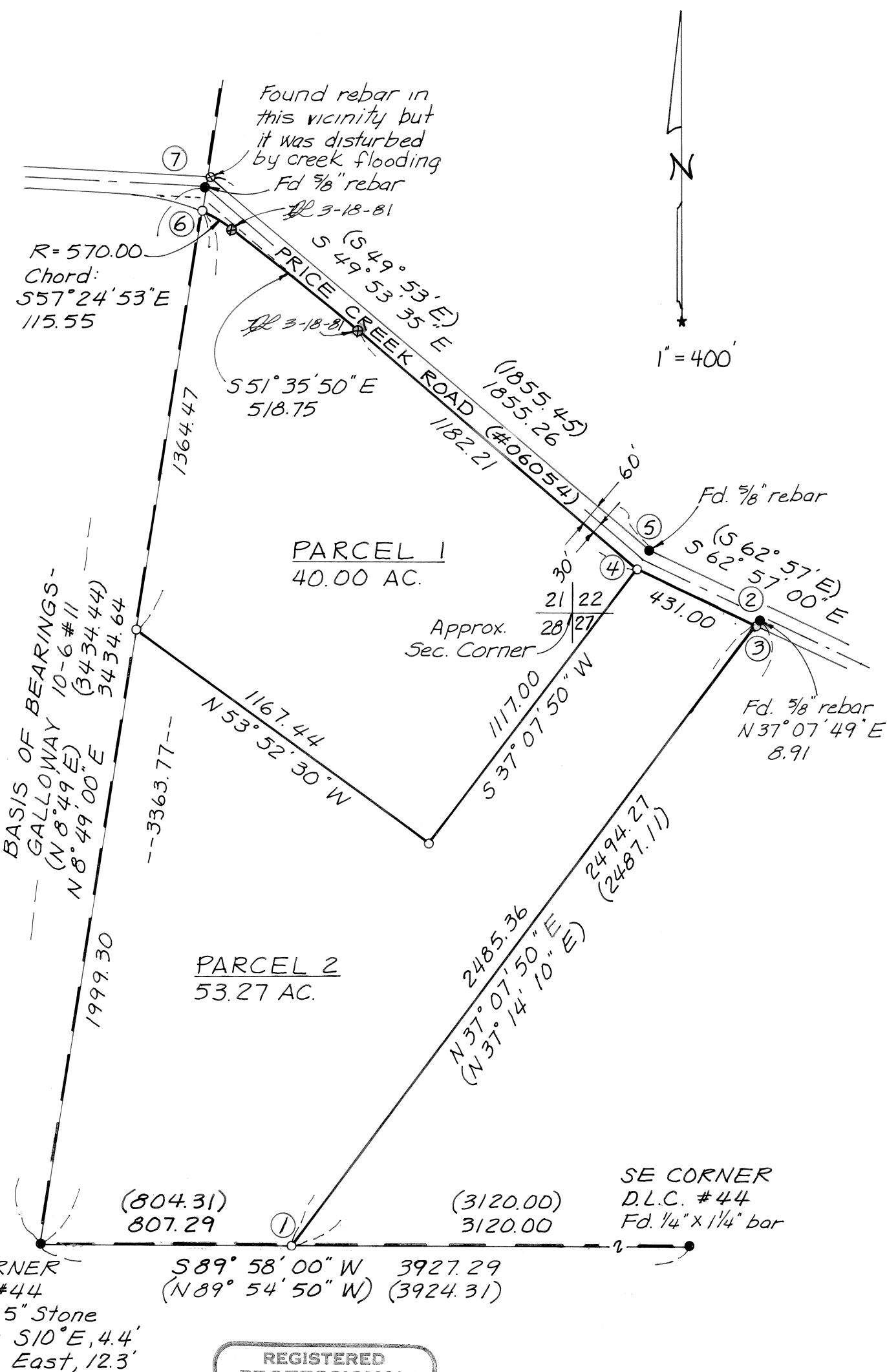
7208

MINOR LAND PARTITION APPROVED

Carl A. Stephens 3/5/81
Planning Official Date
M26748-81

Benton County
Surveyor's Office

C. S. FILE NO. 7208
FILING DATE 2-9-1981
FILE SIZE 14" x 18" EP



NARRATIVE

This survey is based on county surveys by Galloway 10-6#11, Fail-5718, and Bilsborough-6752. Point 1 was established on the south line of the D.L.C. Using the deed information the corner was set 3120 feet from the SE. D.L.C. corner. This corner was previously set in C.S. 5718, but could not be found. Point 2 was set in C.S. 5718 and along with point 1 was used to establish the east line. The northerly line of the property was set 30 feet south of the centerline of the traveled roadway. The record position of the road was established using pins found at 5 and 7, as compared to 10-6#11 and C.S. 6752. The centerline of the traveled roadway fell within the record right of way except in the NW corner of the property. Therefore the right of way line was varied from record as shown. Point 3 was established on the south right of way line and between points 1 and 2. Point 4 was set at the southerly angle point in the road right of way. Point 6 was set on the southerly right of way line of the road and on the west D.L.C. line. The interior corners of parcel 1 were set that parcel 1 would contain 40 acres.

LEGEND

- Found monument as shown
- Set 5/8" x 30" rebar
- Boundary of parcel surveyed
- - - D.L.C. boundary line
- ① Corner numbers referred to in narrative
- ⊗ Set 5/8" x 30" rebar on 3-13-81 for revised county road R/W. See deed M- from Jerry Harpole to Benton Co. filed with Benton Co. Recorder. 3-18-81

LAND PARTITION SURVEY FOR JERRY HARPOLE

IN THE LAZARUS VANBEBBER D.L.C. NO. 44
IN SE 1/4 SEC. 21, SW 1/4 SEC. 22, NE 1/4 SEC. 28,
NW 1/4 SEC. 27, T10S, R6W, W.M.
BENTON COUNTY, OREGON

JANUARY 30, 1981 SCALE: 1" = 400'

REGISTERED PROFESSIONAL LAND SURVEYOR
Theodore J. Langton
OREGON JULY 13, 1979
THEODORE JAMES LANGTON 1823

Northstar Surveying, Inc.
402 N.W. 5th St.
Corvallis, Oregon 97330
Ph: 757-9050

7208