

7271

DRAWING NUMBER

7271

PLAN HOLD CORPORATION • IRVINE, CALIFORNIA

REORDER BY NUMBER 075AR

POSITION EDGE OF PRINT ON THIS LINE

DRAWING NUMBER

7271

PLAN HOLD CORPORATION • IRVINE, CALIFORNIA

REORDER BY NUMBER 075AR

POSITION EDGE OF PRINT ON THIS LINE

7271

RECORD OF SURVEY

FOR
JOHN L. FOX

IN THE SE 1/4 OF SEC. 21, T. 11 S.,
R. 5 W., W.M.
BENTON COUNTY, OREGON
MAY 28, 1981

NARRATIVE:

THE PURPOSE OF THIS SURVEY IS TO MONUMENT
A PARCEL THAT IS BEING CREATED BY A
MINOR LAND PARTITION FOR JOHN FOX.

THE BOUNDARY LINES OF THIS NEW PARCEL
WERE DETERMINED BY HOLDING THE MONU-
MENTATION AS ESTABLISHED BY COUNTY
SURVEY NO. 7135.

SCALE:
1" = 200'

REGISTERED
PROFESSIONAL
LAND SURVEYOR

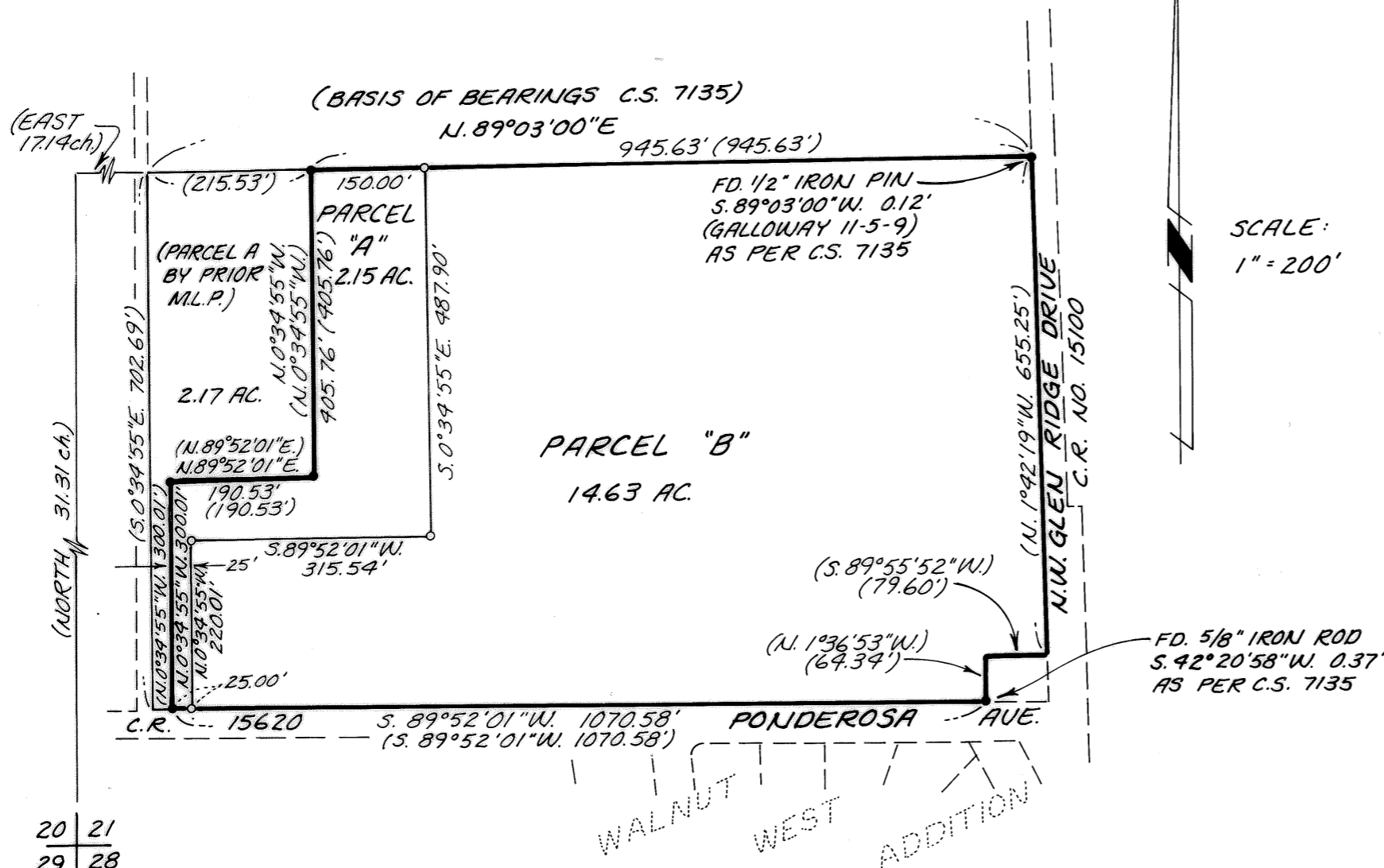
JACK R. BURRELL
LING, GREEN & ASSOC.
1879 N.W. NINTH ST.
CORVALLIS, OR. 97330
(503) 757-8771

Jack R. Burrell

OREGON
JULY 14 1976
JACK R. BURRELL
1630

LEGEND

- FOUND 5/8" IRON ROD AS PER C.S. 7135 EXCEPT AS NOTED
- SET 5/8"x30" IRON ROD (WILL BE SET UPON APPROVAL OF MINOR LAND PARTITION)
- () RECORD INFORMATION AS PER C.S. 7135



20 | 21
29 | 28

Benton County
Surveyor's Office

C. S. FILE NO. 7271
FILING DATE 5-28-1981
FILE SIZE 11x17" SP