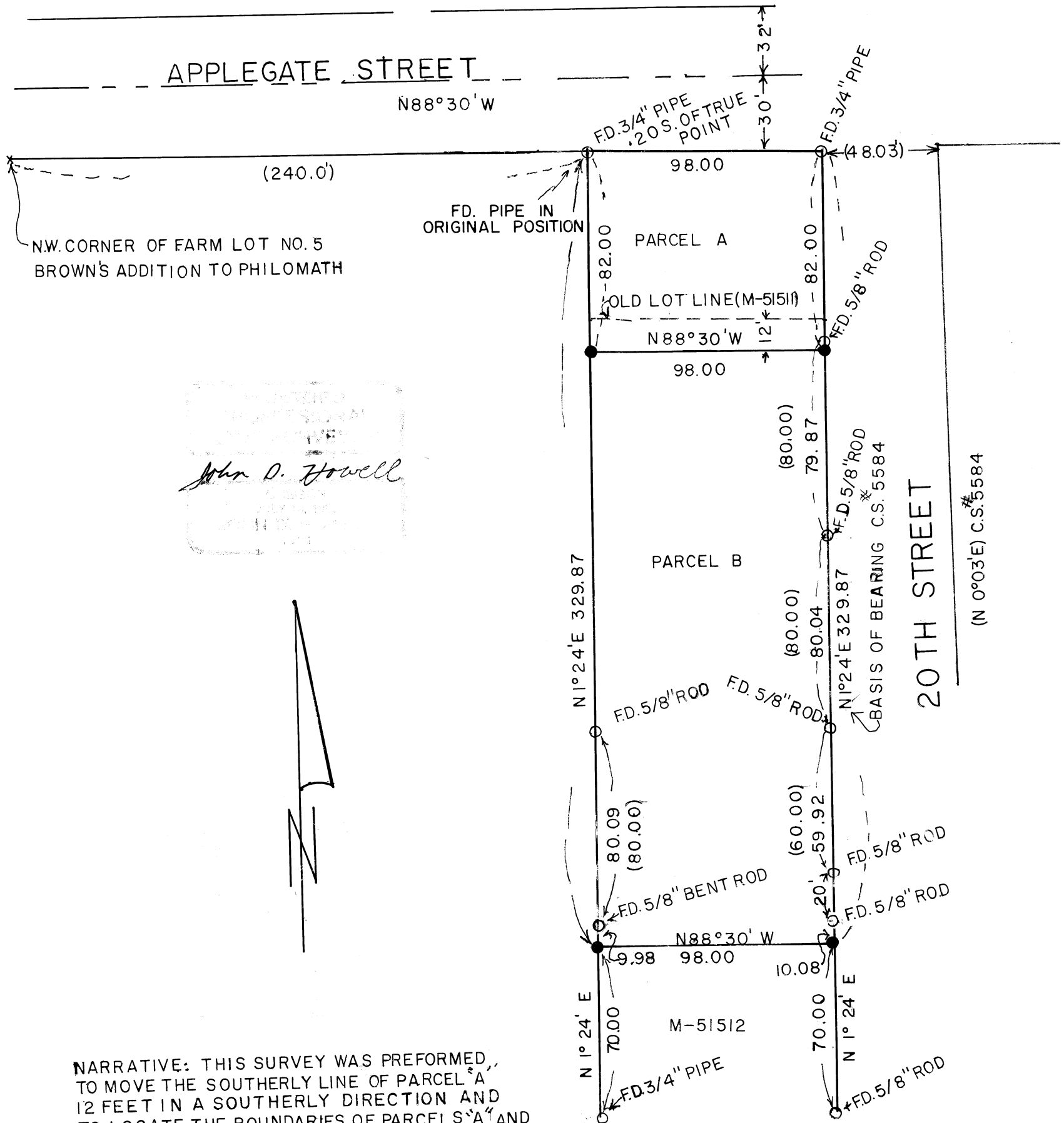


RECORD OF SURVEY  
FOR  
SHERMAN MORGAN  
S.E. 1/4 OF SECTION 12, T. 12 S., R. 6 W., W. M.

HENRY PENLAND D.L.C. NO. 45

CITY OF PHILOMATH, BENTON COUNTY, OREGON  
SCALE 1"=50  
JUNE 16, 1981



*John D. Howell*



NARRATIVE: THIS SURVEY WAS PERFORMED TO MOVE THE SOUTHERLY LINE OF PARCEL A 12 FEET IN A SOUTHERLY DIRECTION AND TO LOCATE THE BOUNDARIES OF PARCELS A AND B USING POINTS FROM C.S. #5584 AS CONTROL.

- LEGEND
- SET 5/8" X 30" IRON ROD
  - FOUND MONUMENTS FROM C.S. #5584
  - ( ) MEASUREMENT OF RECORD
  - M-51512, M-5151I= MICROFILM RECORD NUMBERS

Benton County  
Surveyor's Office  
C. S. FILE NO. 7288  
FILING DATE 6/26/81  
FILE SIZE 11x17 di

7288

7288

PLAN HOLD CORPORATION • IRVINE, CALIFORNIA  
RECORDER BY NUMBER 075AR  
POSITION EDGE OF PRINT ON THIS LINE