

7358

DRAWING NUMBER
7358

PLAN HOLD CORPORATION • IRVINE, CALIFORNIA
REORDER BY NUMBER 0754R
POSITION EDGE OF PRINT ON THIS LINE

DRAWING NUMBER
7358

PLAN HOLD CORPORATION • IRVINE, CALIFORNIA
REORDER BY NUMBER 0754R
POSITION EDGE OF PRINT ON THIS LINE

7358

SURVEY FOR MARVIN ELLIS A MINOR LAND PARTITION

IN A PORTION OF EDWIN A. ABBEY DLC NO. 51 & N.P. NEWTON DLC 72
SE 1/4 SECTION 7, T. 12 S., R. 5 W., W.M.
CITY OF PULMATH, BENTON COUNTY, OREGON

NOVEMBER 9, 1981 SCALE 1" = 60'

MONUMENTS FOUND 5/8" IRON ROD ● AS CORNERS OF RECORD PER C.S. 5551
MONUMENTS SET ○ 5/8" x 30" IRON ROD / PLASTIC CAP MARKED

BASIS OF BEARINGS - C.S. 5551
REFERENCES - C.S. 4454, 5561

JIM UDELL
ORE RLS 1366

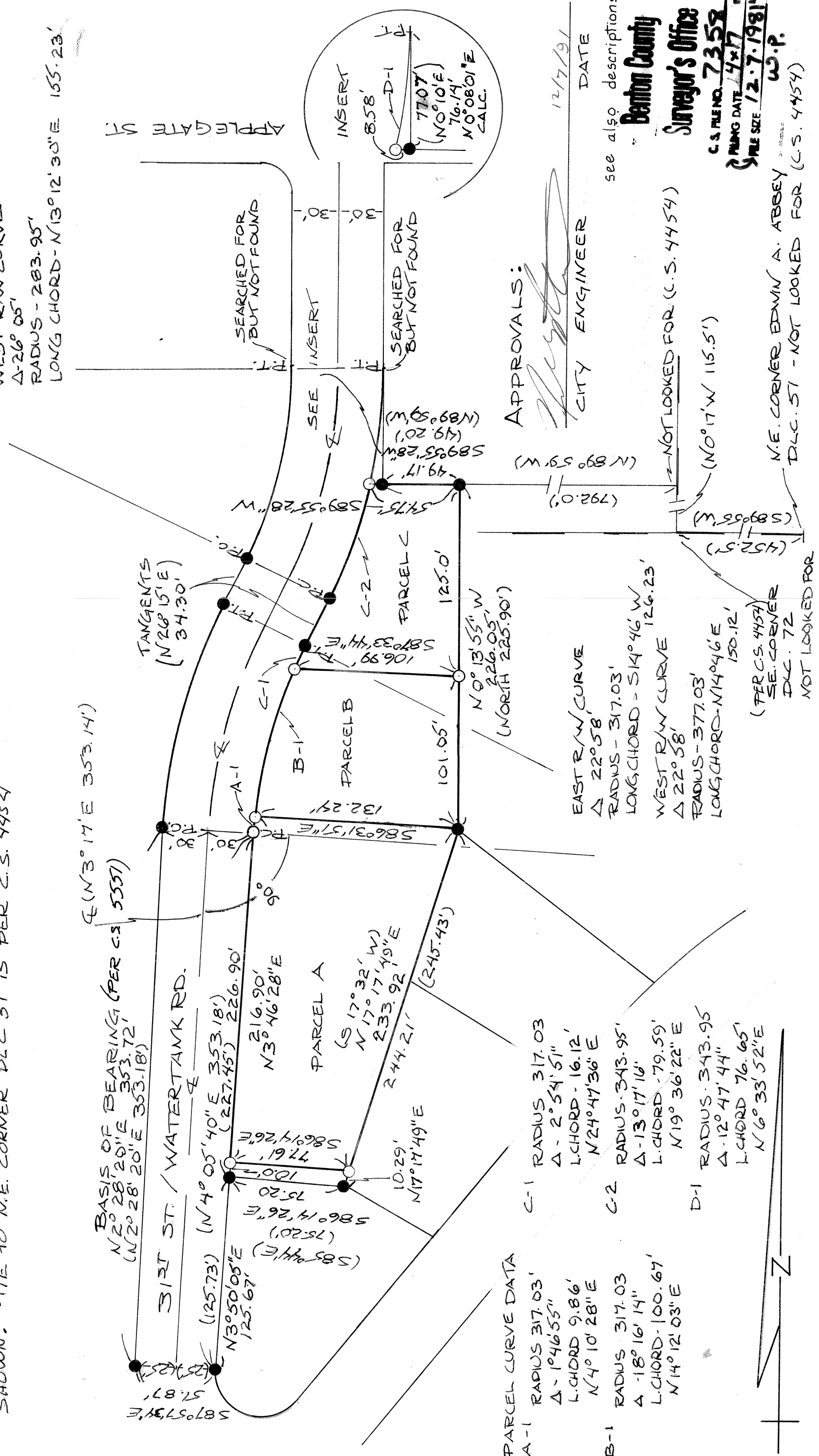
CHIEF OF PARTY - CHUCK GIBBS
DRAWN BY - B. WILKIE

REGISTERED
PROFESSIONAL
LAND SURVEYOR
JAMES F. UDELL
OREGON
SEPT. 23, 1977
JIM UDELL
1366

JAMES F. UDELL
ENGINEERING & SURVEYING
32388 BERLIN ROAD
LEBANON, OREGON 97355
PH. (503) 451-5125

NARRATIVE: ON 11-9-1981 IN THAT TRACT DESCRIBED IN BOOK 166 P. 354, A MINOR
LAND PARTITION SURVEY WAS DONE AT THE REQUEST OF THE OWNER. USING
A JENA 1" REPEATING THEODOLITE & MAG 1-H EDM., SET P.K. NAIL IN SIDEWALK
AT WEST R/W & SIGHTED TO POINTS FOUND (DOUBLED ALL ANGLES). COMPUTED
CO-ORDINATES FOR ALL POINTS AND INVERSED BETWEEN FOR BEARINGS & DISTANCES
SHOWN. TIE TO N.E. CORNER DLC 51 IS PER C.S. 4454

EAST R/W CURVE
Δ 26° 05'
RADIUS - 343.95'
LONG CHORD - S13° 12' 30" W 128.15'
WEST R/W CURVE
Δ 26° 05'
RADIUS - 283.95'
LONG CHORD - N13° 12' 30" E 155.23'



PARCEL CURVE DATA
A-1 RADIUS 317.03'
Δ - 1° 46' 55"
L. CHORD 9.86'
N 4° 10' 28" E
B-1 RADIUS 317.03'
Δ - 18° 16' 14"
L. CHORD - 100.67'
N 14° 12' 03" E
C-1 RADIUS 317.03'
Δ - 2° 54' 51"
L. CHORD - 16.12'
N 24° 47' 36" E
C-2 RADIUS 343.95'
Δ - 13° 17' 16"
L. CHORD - 79.59'
N 19° 36' 22" E
D-1 RADIUS 343.95'
Δ - 12° 47' 44"
L. CHORD 76.65'
N 6° 33' 52" E

APPROVALS:
CITY ENGINEER
DATE 12/7/91

see also descriptions
Benton County
Surveyor's Office
C.S. FILE NO. 7358
PLANNING DATE 4x17
FILE SIZE 12-7-1981
W.P.

N.E. CORNER EDWIN A. ABBEY
DLC. 51 - NOT LOOKED FOR (C.S. 4454)

(PER C.S. 4454)
S.E. CORNER
DLC. 72
NOT LOOKED FOR

NOT LOOKED FOR (C.S. 4454)
(N 0° 17' W 115.5')

EAST R/W CURVE
Δ 22° 58'
RADIUS - 317.03'
LONG CHORD - S14° 46' W 126.23'
WEST R/W CURVE
Δ 22° 58'
RADIUS - 377.03'
LONG CHORD - N14° 46' E 150.12'

BASIS OF BEARING (PER C.S. 5551)
N 2° 28' 20" E 353.72'
N 2° 28' 20" E 353.18'

ϕ (N 3° 17' E 353.14')

31ST ST. / WATERTANK RD.

PARCEL A
S 17° 32' W
N 17° 17' 19" E
233.92'
244.21'
N 17° 14' 49" E
10.29'
N 17° 14' 49" E
171.49'

PARCEL B
106.99'
S 87° 33' 44" E
125.0'
N 0° 13' 55" W
226.05'
(NORTH 225.90')

PARCEL C
54.75'
S 89° 55' 28" W
49.17'
S 89° 55' 28" W
101.05'

TANGENTS
(N 26° 15' E
34.30')

SEARCHED FOR
BUT NOT FOUND
INSERT
SEARCHED FOR
BUT NOT FOUND
INSERT

INSERT
8.58'
D-1
77.07'
(N 0° 10' E
76.14'
N 0° 08' 01" E
CALC.)

