

DRAWING NUMBER
7379

PLAN HOLD CORPORATION • IRVINE, CALIFORNIA

REORDER BY NUMBER 075AR

POSITION EDGE OF PRINT OR THIS LINE

DRAWING NUMBER
7379

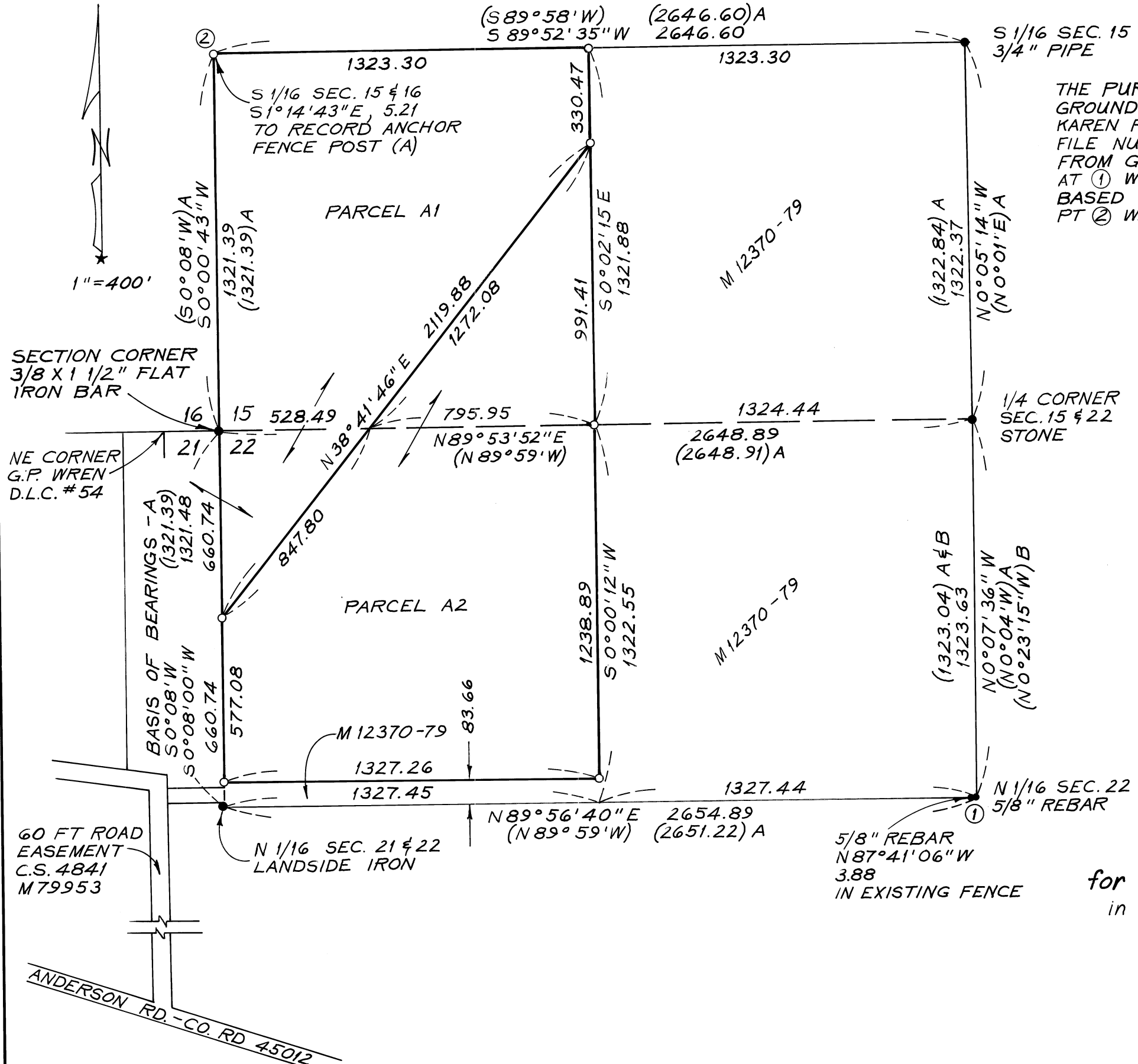
PLAN HOLD CORPORATION • IRVINE, CALIFORNIA

REORDER BY NUMBER 075AR

POSITION EDGE OF PRINT OR THIS LINE

PLAN I

See also MLP Drawing # 20



NARRATIVE

THE PURPOSE OF THIS SURVEY WAS TO DEFINE, ON THE GROUND, THE PARTITION LINE WHICH WAS ESTABLISHED FOR KAREN RANDALL ON DECEMBER 7, 1981; BENTON COUNTY FILE NUMBER PC-81-46/H. ALL FOUND MONUMENTS WERE FROM GALLOWAY SURVEY 11-6 #5 EXCEPT FOR MONUMENTS AT ① WHICH WERE RESET IN C.S. 4804. CORNERS SET WERE BASED ON DEED REFERENCES SHOWN AND SAID MLP PLAN. PT ② WAS SET BY DISTANCE - DISTANCE INTERSECT.

LEGEND

- FOUND MONUMENT AS SHOWN
- SET 5/8" X 30" REBAR WITH YELLOW PLASTIC CAP STAMPED "NORTH STAR"
- ()... DATA OF, OR COMPUTED FROM, RECORD
- ... BOUNDARY OF PARCEL SURVEYED
- A... GALLOWAY 11-6, #5
- B... C.S. 4804

REGISTERED
PROFESSIONAL
LAND SURVEYOR
Theodore J. Langton
OREGON
JULY 13, 1979
THEODORE JAMES LANGTON
1823

Benton County
Surveyor's Office

C. S. FILE NO. 7379
FILING DATE 2-19-82
FILE SIZE 14 X 17
PM.

NORTHSTAR SURVEYING, INC.
402 NW 5TH ST.
CORVALLIS, OREGON, 97330
PH: 503-757-9050

BOUNDARY SURVEY

for DON FISHER and KAREN RANDALL
in NW 1/4 SEC. 22 & SW 1/4 SEC. 15
T11S, R6W, W.M.
BENTON COUNTY, OREGON

JANUARY 8, 1982 SCALE: 1"=400'