

DRAWING NUMBER
7428

PLAN HOLD CORPORATION • IRVINE, CALIFORNIA
RECORDER BY NUMBER 075AR
POSITION EDGE OF PRINT ON THIS LINE

DRAWING NUMBER
7428

PLAN HOLD CORPORATION • IRVINE, CALIFORNIA
RECORDER BY NUMBER 075AR
POSITION EDGE OF PRINT ON THIS LINE

**BOUNDARY SURVEY
for FRED WOEKEL**

in the FRANCIS WRITSMAN DLC #50
in NW 1/4, S14, T10S, R5W, W.M.
BENTON COUNTY, OREGON

JULY 7, 1982 SCALE: 1"=100'

NARRATIVE

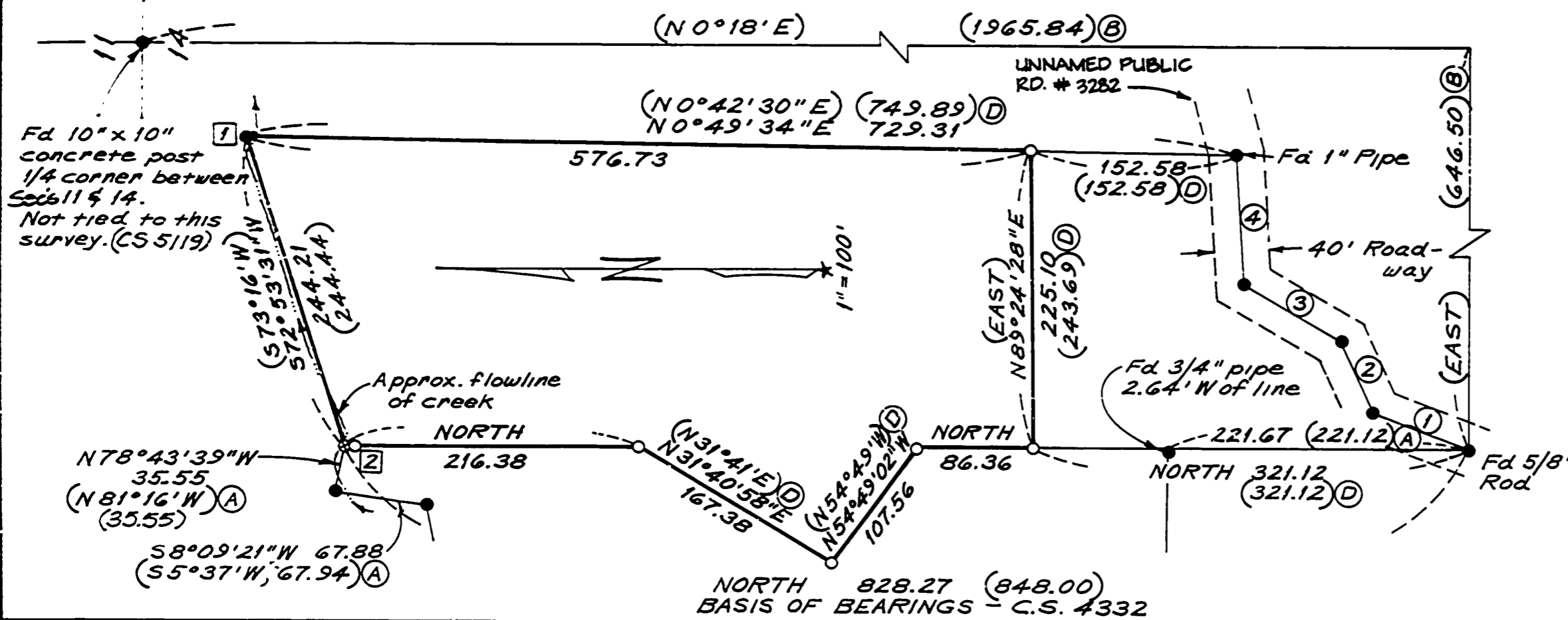
I found the record monuments as shown. ① is unrecorded but fits the deed calls and was supposedly set when the deeds were written. The NW corner was not found but was computed from the two pins to the west as per C.S. 4332. The east and west lines are 20' short of record. The deed description closes, but the calls are to the center of the creek, which I doubt has changed its course. The south line was set holding the deed distances from the south. The triangular piece on the west line was set according to record distances.

LEGEND

- Found 3/4" Pipe unless otherwise noted
- Set 5/8" x 30" rebar with yellow plastic cap stamped "North Star"
- ⊙.... Record position; monument searched for but not found.
- ①... Found unrecorded 5/8" rod 6' north of present creek &.
- ②... Reference monument 11' south of present creek &. Monument is 7.49' South of calculated position of record corner per C.S. 4332.
- ()... Data of, or calculated from, record.
- ①... Road course number (see table)
- Ⓐ... C.S. 4332
- Ⓑ... C.S. 5119
- Ⓓ... Deed # M 27222-81

ROAD COURSE DATA

COURSE #	BEARING & DISTANCE
①	N 20° 43' 12" E 76.77 (N 21° 37' 30" E) (76.76) Ⓑ
②	N 67° 12' 44" E 59.84 (N 67° 37' E) (59.68) Ⓑ
③	N 30° 47' 11" E 82.98 (N 31° 34' 30" E) (82.88) Ⓑ
④	N 87° 18' 26" E 98.15 (N 87° 45' E) (98.04) Ⓑ



REGISTERED
PROFESSIONAL
LAND SURVEYOR

Theodore J. Langton

OREGON
JULY 13, 1979
THEODORE JAMES LANGTON
1823

Northstar Surveying Inc.
402 NW 5th St
Corvallis, Oregon, 97330
Ph: 503-757-9050

REEL 17 FRAME 142