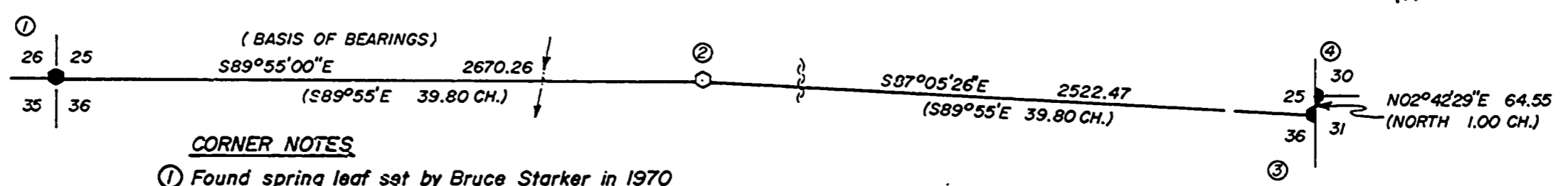


RECORD OF SURVEY
for STARKER FORESTS, INC.
in the N1/2 of SECTION 36, T13S, R7W, W.M.
BENTON COUNTY, OREGON
JULY 29, 1982

Benton County
Surveyor's Office

C. S. FILE NO. 7437
FILING DATE 8-27-82
FILE SIZE 8 1/2" x 14" - 2 pgs.
P.M.

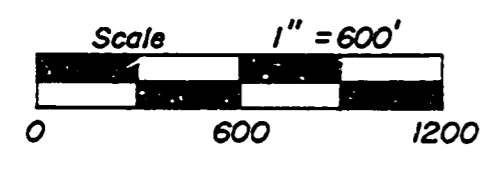


CORNER NOTES

- ① Found spring leaf set by Bruce Starker in 1970
See Benton County corner restoration files
- ② Set 5/8" X 30" iron rod (rod has plastic cap marked "LS 1084")
28" Fir Stump, S32°E, 25.7 Ft. (Slope to face) All marks chopped off
(S29°E, 39 Lks.) - Original BT
Rotted Hemlock Stump, N14 1/2°W, 42.9 Ft. (Slope to face) No marks visible
(N14 1/2°W, 65 Lks.) - Original BT
8" Fir, S80°E, 8.0 Ft. Scribed "1/4 S36 BT"
10" Hemlock, N58°W, 10.3 Ft. Scribed "1/4 S25 BT"
- ③ Found 1" X 1" angle iron (unknown origin)
52" Fir Stump, N11°W, 18.1 Ft. (to face) Scribing visible
(N21°W, 27 Lks.) - Original BT
46" Fir Stump, S60°W, 20.2 Ft. (to face) Scribing visible
(S60°W, 19 Lks.) - Original BT
- ④ Found 1 1/2" iron pipe (unknown origin)
40" Fir Stump, S31°E, 43.8 Ft. (to face) Scribing visible
(S22°E, 68 Lks.) - 1892 BT (R.O. Collier)

Surveyed by:
Peterson & Associates
8155 NW Mitchel Dr.
Corvallis, Oregon
Phone: 757-1794

REGISTERED
PROFESSIONAL
LAND SURVEYOR
[Signature]
OREGON
JULY 31, 1976
JIM S. PETERSON
1084



- Monument found as noted
- Monument set as noted
- () Record data by R.O. Collier-1892
See separate sheet for narrative
Iron pipe diameter is inside measurement

RECORD OF SURVEY
for STARKER FORESTS, INC.
in the N1/2 of SECTION 36, T13S, R7W, W.M.
BENTON COUNTY, OREGON
JULY 29, 1982

NARRATIVE

The purpose of this survey is to establish the position of the N1/4 corner of Section 36. Two stumps, which were possible original BT's, were found previously by Starker employees. The NW stump is a rotted Hemlock with no marks now visible. The SE stump is a Fir stump with a double face, both of which have been chopped out. No marks can now be seen on either face. The Fir stump has cruiser's marks on three sides. By intersecting record distances from the two stumps a possible corner position was established. A search for the original corner stone was made, but the stone was not found.

The creek call to the West, and the ridge call to the East was then checked against record calls. The creek was found to be 9.97 chains West of the possible corner position (record = 9.01 chains). The ridge was found to be 6 chains (more or less, due to being a fairly flat topped ridge) East of the possible corner position (record = 6.09 chains).

The NW and NE corners of Section 36 were then tied to determine the relationship of the possible corner position to each of these corners. As is shown on the Record of Survey map, the distance is long to the West and short to the East. A search was then made at and around the mid-point position (which fit the creek call to the West better than the position from the two stumps), but no evidence was found. A thorough search was then made of a wide area, but no evidence was found.

Although no marks could be found on either stump, their bearing and distance relationship with each other is very good, and the species of both is correct. It is also evident that there were two faces on the Fir stump that were chopped out at one time. Due to these findings I feel that the two stumps in question are the best evidence of the original corner position, and I have accepted them as such.

Also, note that at the NE corner of Section 36 two of the original BT's are definitely identifiable. But the record bearings and distances from these BT's can not be made to fit conditions on the ground. This could leave some doubt as to the exact location of said corner. Since the origin of the angle iron at this corner is unknown, it is also unknown whether or not that person had more evidence of the original corner than is now available.

Also, note that the NW corner of Section 31, T13S, R6W is an iron pipe of unknown origin. If the record bearing and distance from the 1892 BT by R. C. Collier were used to position this corner it would differ from the pipe by approximately seven feet. But again it is not presently known what evidence this unknown person had at the time of his restoration.

The Basis of Bearings of this survey is the West one half of the North line of Section 36, as per the original township plat.



Benton County
Surveyor's Office
C.S. FILE NO. 7437
FILED DATE 8-27-82
SEE B1/2 "X" # - 2746
PA