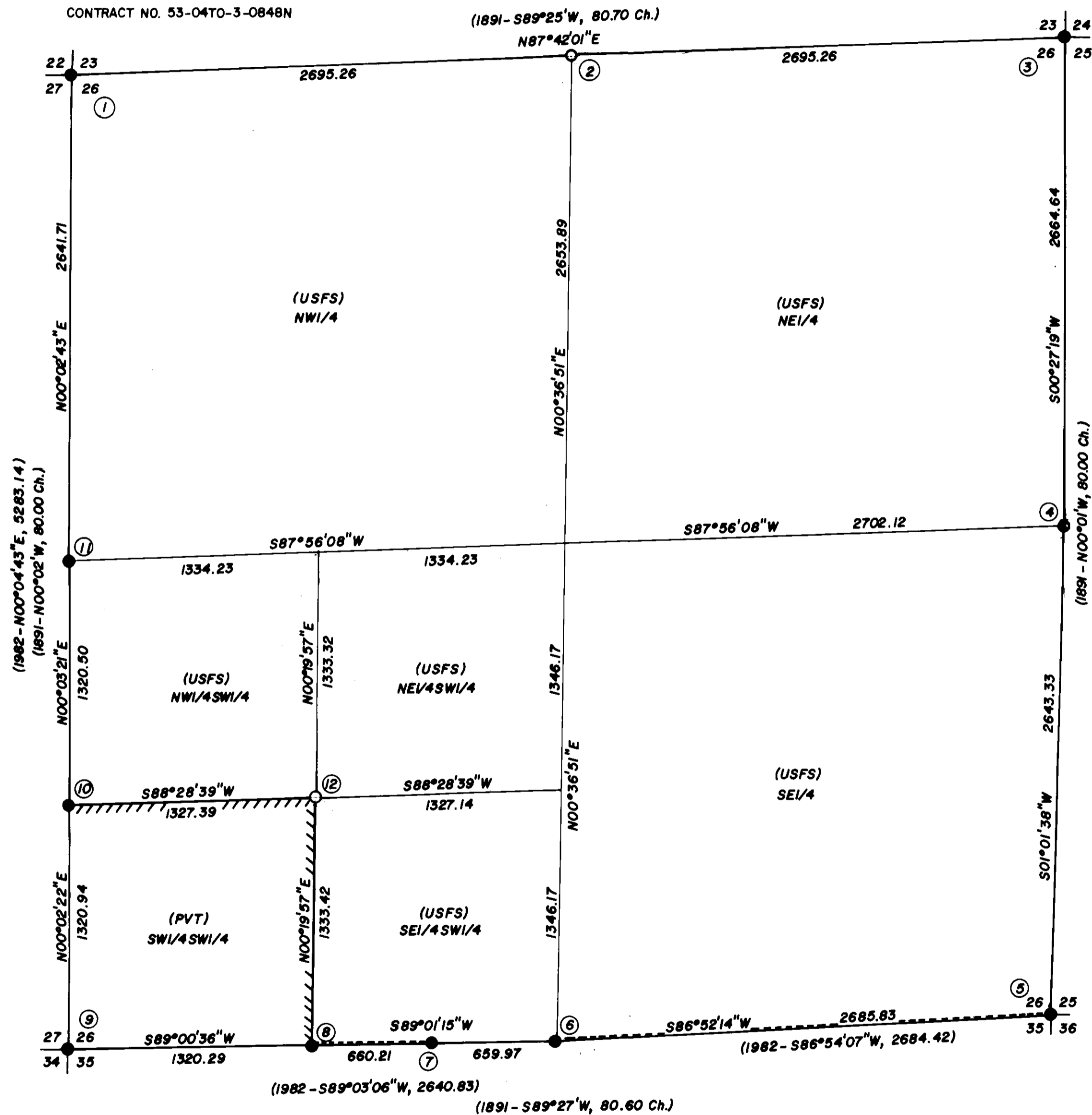


RECORD OF SURVEY
for the U.S. FOREST SERVICE
in SECTIONS 26 & 27, T14S, R9W, W.M.
BENTON COUNTY, OREGON
JUNE 6, 1983
BENNER PITCH CADASTRAL SURVEY
CONTRACT NO. 53-04TO-3-0848N

Benton County
Surveyor's Office

C.S. FILE NO. 7540
FIELD DATE 7-27-83
MAP SIZE 18" x 24" - 3 shts.
P.M.E.D.



NOTES

- 1) Basis of bearings is a solar observation
- 2) () Data of record
- 3) ● Existing corners found, monumented as noted
- 4) ○ Existing corners found, re-monumented by this survey
- 5) ○ Corners established by this survey and monumented as noted
- 6) // Boundary lines marked with fiberglass posts
- 7) Fiberglass posts are set at all corners as per contract specifications
- 8) All BT distances measured are to the center of the tree
- 9) All BT's set have:
 - a) a metal BT tag facing the corner
 - b) "Attention" signs on back
 - c) a red paint band
 - d) a brass washer, stamped "LS 1102", nailed to face
- 10) See Field Books 1 through 4 for all notes on this plat
- 11) All aluminum monuments set have a magnet under the cap (Caps are also aluminum)
- 12) A system of closed traverses, using 10" total station and 1" theodolite with EDM, was used to perform this survey
- 13) At the 1/4 corner of sections 25 and 26 found original SW BT (now a 32" stump). The only remaining evidence on this stump is the bottom of an axed face. The face is flat and notched at the bottom (typical of Gesner), and points the record direction. The corner point, as determined at record bearing and distance from this stump, is also in line with original line blazes to the South.
- 14) Pipe diameters are inside diameters
- 15) ----- Previously posted lines

HISTORY

- 1891 - Alonzo Gesner, under his Contract No. 557, subdivided T14S, R9W
- 1973 - R.J. Hollamon (LS 953) perpetuated the original NW corner Section 27 (C.S. 5497)
- 1976 - F.I. Lemke (LS 443) retraced the West line of Section 27 (C.S. 6094)
- 1982 - J.W. Prochnau (LS 1305) retraced the South line of Section 26, and the South and East lines of Section 27 (C.S. 7373)

We, Jim S. Peterson and Norman D. Springer, Registered Land Surveyors in the State of Oregon, hereby certify that this plat and the notes hereon are a correct representation of a survey we performed during June of 1983, at the request of the U.S. D.A. (Forest Service), in accordance with the Statutes of the State of Oregon and with the Articles of our Contract.

REGISTERED PROFESSIONAL LAND SURVEYOR

JIM S. PETERSON
1084

Peterson & Associates
8155 NW Mitchell Dr.
Corvallis, Oregon 97330
Phone: 757-1794

REGISTERED PROFESSIONAL LAND SURVEYOR

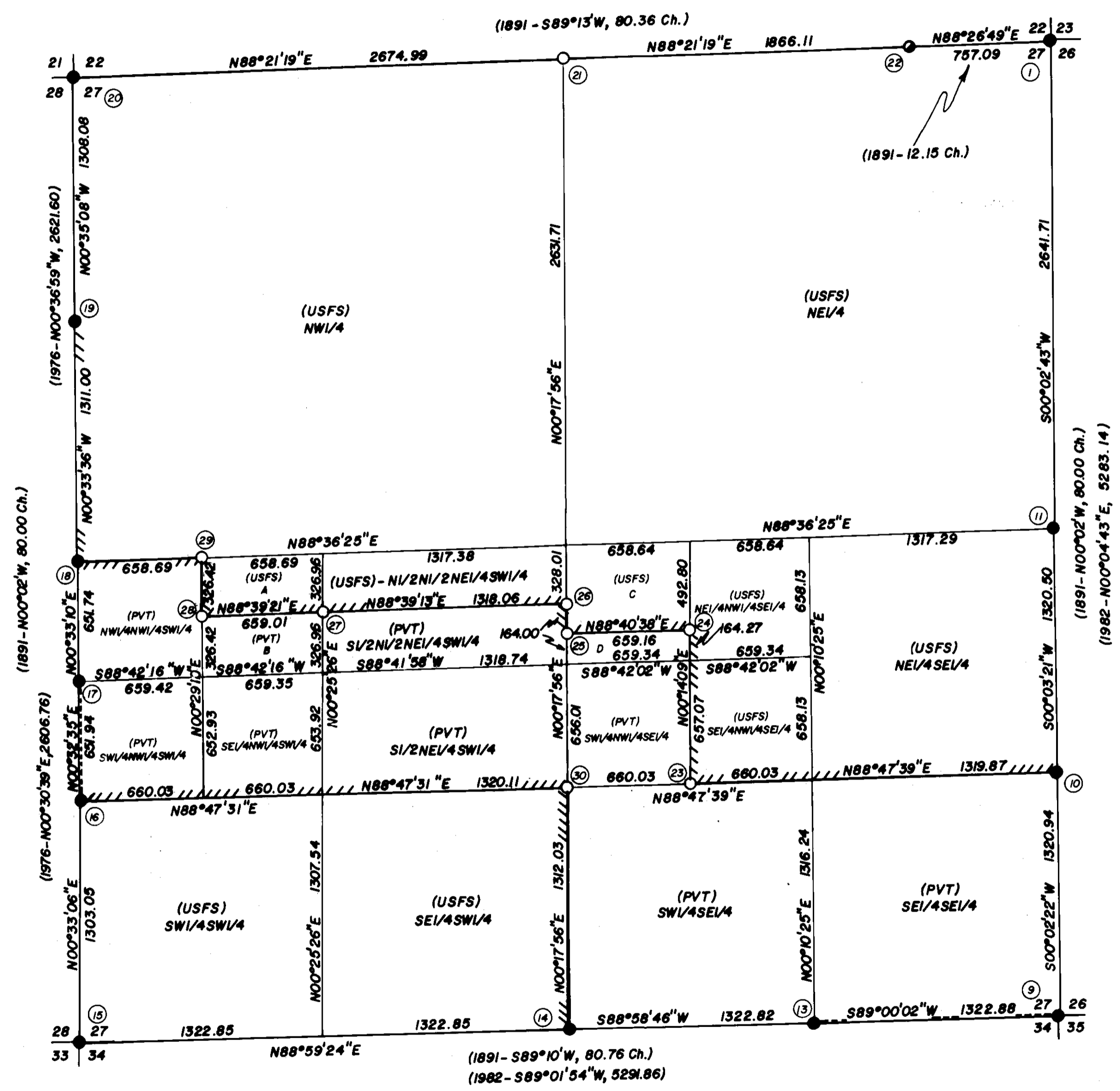
NORMAN D. SPRINGER
1102

Springer Surveying
Rt. 1, Box 288-B
Corvallis, Oregon 97330
Phone: 745-5798

**Benton County
Surveyor's Office**

RECORD OF SURVEY
for the U.S. FOREST SERVICE
in SECTIONS 26 & 27, T.14S., R.9W., W.M.
BENTON COUNTY, OREGON
JUNE 6, 1983

C. & FILE NO. 7540
FIELD DATE 7-22-83
FILE SIZE 18" x 24" - 3 sh. s.
P.M.E.D.



- ① CORNER OF SECTIONS 22, 23, 26 & 27
FOUND 3" ALUMINUM CAP ON 2" ALUMINUM PIPE
BT'S FOUND
31" FIR STUMP, N27°W, 19.1 FT., SCRIBING VISIBLE, ORIG. BT(N 33W, 12 LKS.)
46" FIR STUMP, N37°E, 20.5 FT., NO MKS., ORIG. BT(N37°E, 30 LKS.)
42" FIR STUMP, S 55°E, 21.1 FT., SCRIBING VISIBLE, ORIG. BT(S 67°E, 31 LKS.)
REFERENCE MONUMENT: BRASS CAP MARKED T14S R9W S27 R.M.
1982 PLS 1305 BEARS S 47°W, 74.9 FT. (S 45°W, 75.0 FT.)
- ② 1/4 CORNER OF SECTIONS 23 & 26
SET 2" X 30" ALUMINUM PIPE WITH 3" CAP AT PROPORTIONATE POSITION
BT'S MARKED
5" FIR, S 46-1/2°E 10.8 FT., SCRIBED 1/4 S26 BT
10" FIR, N 30°E, 16.4 FT., SCRIBED 1/4 S23 BT
- ③ CORNER OF SECTIONS 23, 24, 25 & 26
FOUND 3" BRASS CAP ON 2" IRON PIPE
BT'S FOUND
34" FIR, N 37°W, 59.9 FT., HEALED FACE (N 41°W, 87 LKS.)
34" FIR, N 61-1/2°E, 33.0 FT., HEALED FACE (N 59°E, 50 LKS.)
33" FIR, S 56-1/2°W, 65.3 FT., SCRIBING VISIBLE (S 58-1/2°W, 98 LKS.)
38" FIR, S 28°E, 65.5 FT., SCRIBING VISIBLE (S 28°E 97 LKS.)
10" FIR STUB UPROOT, (N 60°E, 30 LKS.) NO MARKS VISIBLE, ORIGINAL BT
16" MAPLE UPROOT, (S 43°W, 15 LKS.) MOLE IN FACE, ORIGINAL BT
- ④ 1/4 CORNER OF SECTIONS 25 & 26
SET 2" X 30" ALUMINUM PIPE WITH 3" CAP AT RECORD BEARING AND
DISTANCE FROM THE ORIGINAL SW BEARING TREE.
BT FOUND - ORIGINAL
32" FIR STUMP, S 78°W, 9.9 FT., BOTTOM OF FACE VISIBLE (S 78°W, 15 LKS.)
BT'S MARKED
4" FIR, N 24-1/2°W, 11.3 FT., SCRIBED X BT
5" FIR, S 56-1/4°E, 22.2 FT., SCRIBED 1/4 S25 BT
SEE NOTES FOR MORE INFORMATION ON THIS CORNER (NOTE 13)
- ⑤ CORNER OF SECTIONS 25, 26, 35 & 36
FOUND 3" ALUMINUM CAP ON 2" ALUMINUM PIPE
BT'S FOUND
38" FIR SNAG, N 44°W, 11.9 FT., SCRIBING VISIBLE (N 44-1/2°W, 18 LKS.) ORIGINAL BT.
44" FIR, N 41-1/2°E, 64.4 FT., SCRIBING VISIBLE (N 40°E, 62.4 FT.)
40" FIR, S 87°E, 73.0 FT., SCRIBING VISIBLE (S 87°E, 72.6 FT.)
30" ALDER, N 82°W, 40.8 FT., BARK SCRIBING VISIBLE (N 83°W, 39.8 FT.)
BT MARKED
70" MAPLE, S 82°W, 127.5 FT., SCRIBED T14S R9W S35 BT
FOUND 5/8" IRON ROD, N 80°E, 1.10 FT.
- ⑥ 1/4 CORNER OF SECTIONS 26 & 35
FOUND 3" ALUMINUM CAP ON 2" ALUMINUM PIPE
BT'S FOUND
16" FIR SNAG, SOUTH, 25.7 FT., SCRIBING VISIBLE (SOUTH, 38 LKS.) ORIGINAL BT
38" FIR, N 1-1/2°E, 41.9 FT., SCRIBING VISIBLE (N 3°E, 42.5 FT.)
32" FIR, S 64°W, 33.2 FT., SCRIBING VISIBLE (S 64°W, 33.2 FT.)
- ⑦ EAST WEST 1/4 SECTIONS 26 & 35
FOUND 3" ALUMINUM CAP ON 2" ALUMINUM PIPE
BT'S FOUND
14" ALDER, S 45-3/4°W 69.7 FT., BARK SCRIBING VISIBLE (S 44-1/2°W, 69.7 FT.)
REFERENCE MONUMENT: BRASS CAP MARKED T14S R9W EW 1/4 S26 R.M.
1982 PLS 1305, BEARS N 30-1/4°W, 13.6 FT. (N 32°W, 13.6 FT.)
- ⑧ WEST 1/16 CORNER OF SECTIONS 26 & 35
FOUND 3" ALUMINUM CAP ON 2" ALUMINUM PIPE
BT'S FOUND
11" FIR, S 54°W, 17.8 FT., SCRIBING VISIBLE (S 52-1/2°W, 17.8 FT.)
30" FIR, N 22°E, 16.9 FT., SCRIBING VISIBLE (N 16°E, 16.9 FT.)
- ⑨ CORNER OF SECTIONS 26, 27, 34 & 35
FOUND 3" ALUMINUM CAP ON 2" ALUMINUM PIPE
BT'S FOUND
10" ALDER, N 50°W, 79.7 FT., BARK SCRIBING VISIBLE (N 50°W, 79.7 FT.)
10" ALDER, S 20°W 41.7 FT., BARK SCRIBING VISIBLE (S 18°W 41.7 FT.)
REFERENCE MONUMENTS: BRASS CAP MARKED T14S R9W S26 R.M.
1982 PLS 1305, BEARS N 60°E, 3.6 FT. (N 56°E, 3.6 FT.); BRASS CAP
MARKED T14S R9W S35 R.M. 1982 PLS 1305, BEARS S 42°E, 7.7 FT.,
(S 42°E, 7.7 FT.)
- ⑩ SOUTH 1/16 CORNER OF SECTIONS 26 & 27
FOUND 3" ALUMINUM CAP ON 2" ALUMINUM PIPE
BT'S FOUND
20" MAPLE, N 18°W, 16.8 FT., SCRIBING VISIBLE (N 15°W, 16.8 FT.)
10" FIR, S 01°E, 40.2 FT., SCRIBING VISIBLE (S 01°E, 40.4 FT.)
- ⑪ 1/4 CORNER OF SECTIONS 26 & 27
FOUND 3" ALUMINUM CAP ON 2" ALUMINUM PIPE
BT'S FOUND
12" MAPLE, N 21°W, 24.2 FT., SCRIBING VISIBLE (N 21°W, 25.0 FT.)
24" ALDER, N 60°E, 84.3 FT., BARK SCRIBING VISIBLE (N 60°E, 83.4 FT.)

T14S R9W
S22 | S23
S27 | S26
1981
PLS 1305

T14S R9W
S23
1/4 S26
LS 1102
1983

T14S R9W
S23 | S24
S26 | S25
1964
4185 ORE

T14S R9W
1/4
S26 | S25
LS 1102
1983

T14S R9W
S26 | S25
S35 | S36
1980
RLS 1467

T14S R9W
1/4 S26
S35
1991
PLS 1305

T14S R9W
S26
EW 1/4 S35
1981
PLS 1305

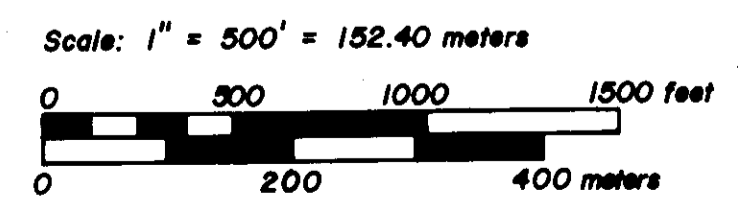
T14S R9W
W 1/16 S26
S35
1981
PLS 1305

T14S R9W
S27 | S26
S34 | S35
1981
PLS 1305

T14S R9W
S 1/16
S27 | S26
1981
PLS 1305

T14S R9W
1/4
S27 | S26
1981
PLS 1305

A = N1/2NE1/4NW1/4SW1/4
B = S1/2NE1/4NW1/4SW1/4
C = N1/2NW1/4NE1/4SE1/4 & N1/2S1/2NW1/4NE1/4SE1/4
D = S1/2S1/2NW1/4NE1/4SE1/4 (PVT)



Magnetic Declination = 19 1/4° E

RECORD OF SURVEY
for the U.S. FOREST SERVICE
in SECTIONS 26 & 27, T.14S., R.9W., W.M.
BENTON COUNTY, OREGON
JUNE 6, 1983

Benton County
Surveyor's Office

C. S. FILE NO. 7540
FILING DATE 7-22-83
FILE SIZE 18" X 24" - 3 sh. 3
P. M. E. D.

- ⑫ SOUTHWEST 1/16 CORNER OF SECTION 26
SET 2" X 30" ALUMINUM PIPE WITH 3" CAP
BT'S MARKED
6" FIR, S18-1/2°W, 10.9 FT., SCRIBED X BT
12" FIR, N26°E, 13.8 FT., SCRIBED SW 1/16 S 26 BT
- ⑬ EAST 1/16 CORNER OF SECTIONS 27 & 34
FOUND 3" ALUMINUM CAP ON 2" ALUMINUM PIPE
BT'S FOUND
10" ALDER, S 72°W, 13.2 FT., BARK SCRIBING VISIBLE (S 72°W, 13.2 FT.)
12" ALDER, N 24°W, 23.7 FT., BARK SCRIBING VISIBLE (N 24°W, 23.5 FT.)
- ⑭ 1/4 CORNER OF SECTIONS 27 & 34 - WITNESS CORNER
FOUND 2-1/2" BRASS CAP S 88° 39' 24" W 20.00 FT.
FROM TRUE POINT.
BT'S FOUND
14" ALDER, N 23°W, 36.2 FT., BARK SCRIBING VISIBLE (N 23°W, 36.2 FT.)
14" ALDER, S 94-1/2°W, 46.2 FT., BARK SCRIBING VISIBLE (S 34-1/2°W, 46.2)
- ⑮ CORNER OF SECTIONS 27, 28, 33 & 34
FOUND 2-1/2" BRASS CAP
BT'S FOUND
52" FIR, N 81°E, 22.3 FT., CHOPPED FACE (N 81°E, 33 LKS) ORIGINAL BT
46" FIR, S 61°E, 45.5 FT., SCRIBING VISIBLE (S 61°E, 45.5 FT.)
40" FIR, S 42°W, 14.8 FT., SCRIBING VISIBLE (S 42°W, 14.8 FT.)
54" FIR, N 40°W, 13.9 FT., SCRIBING VISIBLE (N 40°W, 13.8 FT.)
50" FIR, S 33°E, 60.9 FT., HEALED BLAZE (S 34°E, 73 LKS) ORIGINAL BT
- ⑯ SOUTH 1/16 CORNER OF SECTIONS 27 & 28
FOUND 2-1/2" BRASS CAP
BT'S FOUND
60" FIR, S 01°E, 46.4 FT., SCRIBING VISIBLE (S 01°E, 46.4 FT.)
4" VINE MAPLE, N 40°W, 12.8 FT., BARK SCRIBING VISIBLE (N 40°W, 12.8 FT.)
BT MARKED
22" ALDER, S 83°W, 49.2 FT., BARK SCRIBED S 1/16 S 28 BT
- ⑰ NORTH-SOUTH 1/16 CORNER OF SECTIONS 27 & 28
FOUND 2-1/2" BRASS CAP
BT'S FOUND
22" CEDAR, SOUTH, 35.5 FT., SCRIBING VISIBLE (S 22°E, 34.9 FT.)
10" FIR, S 91-3/4°E, 148.5 FT., HEALED FACE (S 32° 46'E, 148.5 FT.)
- ⑱ 1/4 CORNER OF SECTIONS 27 & 28
FOUND 2-1/2" BRASS CAP
BT'S FOUND
44" FIR STUMP, S 26-1/2°W, 40.9 FT., AXED BLAZE (S 26-1/2°W, 62 LKS) ORIGINAL BT
8" FIR, N 76°W, 12.2 FT., HEALED FACE (N 70°W, 12.0 FT.)
38" FIR, S 60°E, 22.1 FT., SCRIBING VISIBLE (S 60°E, 22.1 FT.)
- ⑲ NORTH 1/16 CORNER OF SECTIONS 27 & 28
FOUND 2-1/2" BRASS CAP
BT'S FOUND
26" FIR, N 30°W, 15.3 FT., SCRIBING VISIBLE (N 30°W, 15.3 FT.)
42" FIR, N 44°E, 10.3 FT., SCRIBING VISIBLE (N 55°E, 10.75 FT.)
- ⑳ CORNER OF SECTIONS 21, 22, 27 & 28
FOUND 2-1/2" BRASS CAP
BT'S FOUND
16" MAPLE, S 80°E, 20.8 FT., HEALED FACE (S 76°E, 20.8 FT.)
50" FIR, N 09°E, 26.3 FT., HEALED FACE (N 07°E, 26.3 FT.)
54" FIR, S 67°W, 134.0 FT., HEALED FACE (S 69-1/2°W, 203 LKS) ORIGINAL BT
60" FIR, N 71°W, 128.4 FT., HEALED FACE (N 73-1/2°W, 196 LKS) ORIGINAL BT
- ㉑ 1/4 CORNER OF SECTIONS 22 & 27
SET 2" X 30" ALUMINUM PIPE WITH 3" CAP AT PROPORTIONATE POSITION
BT'S MARKED
30" FIR, N 51°E, 22.2 FT., SCRIBED 1/4 S 22 BT
32" FIR, S 73°W, 11.5 FT., SCRIBED 1/4 S 27 BT
- ㉒ LINE TREE BETWEEN SECTIONS 22 & 27
FOUND 26" FIR STUMP WITH NOTCH ON E. & W. SIDES
BT'S MARKED
6" ALDER, S 56-1/2°E, 32.0 FT., BARK SCRIBED AP S 27 BT
4" FIR, N 28-1/4°W, 47.2 FT., SCRIBED X BT
REFERENCE MONUMENT, SET A 2" X 30" ALUMINUM PIPE WITH 3" CAP
MARKED RM T14S R9W AP 522 LS 1102 S. 90 FT 1983 N 40-1/4°E S. 90 FT.

T14S R9W
SW 1/16 S 26
LS 1102
1983

T14S R9W
E 1/16 S 27
S 34
1981
PLS 1305

T14S R9W
W 1/4 →
S 34
1981
PLS 1305

T14S R9W
S 28 | S 27
S 33 | S 34
1976
RLS 443

T14S R9W
S 1/16
S 28 | S 27
1976
RLS 443

T14S R9W
NS 1/16
S 28 | S 27
1976
RLS 443

1974
1/4 COR
S 28 | S 27
T14S R9W
RLS 443

RLS 443
1975
S 28 | S 27
T14S R9W

T14S R9W
21 | 22
28 | 27
RS 753
1972

T14S R9W
1/4 S 22
S 27
LS 1102
1983

- ㉓ CENTER WEST SOUTHEAST 1/16 CORNER OF SECTION 27
SET 2" X 30" ALUMINUM PIPE WITH 3" CAP
BT'S MARKED
10" FIR, S 78°E, 21.9 FT., SCRIBED CW SE 1/16 S 27 BT
14" MAPLE, N 14°E, 33.0 FT., SCRIBED CW SE 1/16 BT
- ㉔ 1/1024 CORNER IN NW 1/4 OF SE 1/4 OF SECTION 27
SET 2" X 30" ALUMINUM PIPE WITH 3" CAP
BT'S MARKED
26" FIR, S 17°E, 3.5 FT., SCRIBED 1/1024 S 27 BT
14" MAPLE, N 67-1/2°E 55.0 FT., SCRIBED 1/1024 S 27 BT
- ㉕ 1/1024 ON N-S CENTERLINE OF SECTION 27
SET 2" X 30" ALUMINUM PIPE WITH 3" CAP
BT'S MARKED
7" ALDER, S 87-1/4°W, 30.8 FT., BARK SCRIBED 1/1024 S 27 BT
32" FIR, S 02-1/2°E, 34.1 FT., SCRIBED 1/1024 S 27 BT
- ㉖ CENTER NORTH NORTH SOUTH 1/256 CORNER OF SECTION 27
SET 2" X 30" ALUMINUM PIPE WITH 3" CAP
BT'S MARKED
12" FIR, N 48°E, 14.5 FT., SCRIBED CNNS 1/256 S 27 BT
15" MAPLE, N 67-1/2°W, 37.2 FT., SCRIBED CNNS 1/256 S 27 BT
- ㉗ CENTER NORTH NORTH SOUTH WEST 1/256 CORNER OF SECTION 27
SET 3/8" X 30" IRON ROD WITH YELLOW PLASTIC CAP MARKED LS 1102
BT'S MARKED
13" FIR, N 24°W, 4.7 FT., SCRIBED CNNSW 1/256 S 27 BT
11" FIR, S 89°E, 11.5 FT., SCRIBED X BT
- ㉘ CENTER NORTH NORTHWEST SOUTHWEST 1/256 CORNER OF SECTION 27
SET 2" X 30" ALUMINUM PIPE WITH 3" CAP
BT'S MARKED
12" FIR, N 15°W, 7.6 FT., SCRIBED CNNSW 1/256 S 27 BT
14" FIR, S 85-3/4°E, 26.9 FT., SCRIBED X BT
- ㉙ CENTER WEST WEST 1/16 CORNER OF SECTION 27
SET 2" X 30" ALUMINUM PIPE WITH 3" CAP
BT'S MARKED
8" FIR, S 04°W, 16.6 FT., SCRIBED CWW 1/16 S 27 BT
16" ALDER, N 41°W, 12.5 FT., BARK SCRIBED CWW 1/16 S 27 BT
- ㉚ CENTER SOUTH 1/16 CORNER OF SECTION 27
SET 2" X 30" ALUMINUM PIPE WITH 3" CAP
BT'S MARKED
6" ALDER, S 82-3/4°W, 5.6 FT., BARK SCRIBED CS 1/16 S 27 BT
6" FIR, S 42-1/2°E, 13.0 FT., SCRIBED CS 1/16 S 27 BT
FOUND 3/4" IRON ROD, S 39° 25' W, 28.5 FT.

T14S R9W
CW SE 1/16
S 27
LS 1102
1983

T14S R9W
1/1024 S 27
LS 1102
1983

T14S R9W
1/1024 S 27
LS 1102
1983

T14S R9W
CNNS 1/256 S 27
LS 1102
1983

T14S R9W
S 28 | S 27
S 33 | S 34
1976
RLS 443

T14S R9W
C W W 1/16
S 27
LS 1102
1983

T14S R9W
S 1/16 | S 27
LS 1102
1983