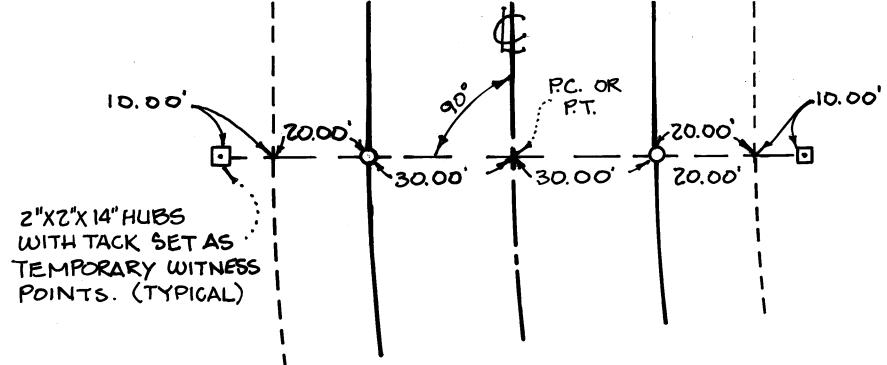


NARRATIVE :

THE PURPOSE OF THIS SURVEY IS TWOFOLD:
 1) TO CORRECT THE MISPLACEMENT OF A DIMENSION ARROW ON C.S. 7453 AT THE EASTERLY EXTENT OF THE S. 89°54'1"E. 2000' COURSE. THIS ARROW MISTAKENLY WENT TO THE EDGE OF THE EXISTING RIGHT-OF-WAY OF AIRPORT AVENUE INSTEAD OF TO POINT ⑤ AS SHOWN HEREON.
 2) TO PLAT OF RECORD THE SETTINGS OF PERMANENT WITNESS MONUMENTS TO PERPETUATE THE LOCATION OF MOST OF THE MONUMENTS SET ON C.S. 7453 WHICH WERE DESTROYED DURING ROAD CONSTRUCTION IN THE MONTH OF JULY, 1983. THE EXISTING MONUMENTS WERE NOT LOWERED TO A POSITION THAT WOULD BE SAFE FROM CONSTRUCTION DUE TO THE FACT THAT WITH THE ACQUISITION OF 20' WIDE ROAD SLOPE AND DRAINAGE EASEMENTS, THEY WOULD NEED TO BE LOWERED 3 TO 4 FEET TO BE BELOW THE DITCH LINE AND AN ADDITIONAL 2 FEET TO BE BELOW THE FARMING ACTIVITY PERMITTED TO OCCUR IN THESE DEEP, BUT GENTLY SLOPING DRAINAGE DITCHES. THE MONUMENTS DESTROYED WERE WITNESSED BY SETTING 2"x2"x1/4" HUBS WITH TACKS AS SHOWN BELOW.

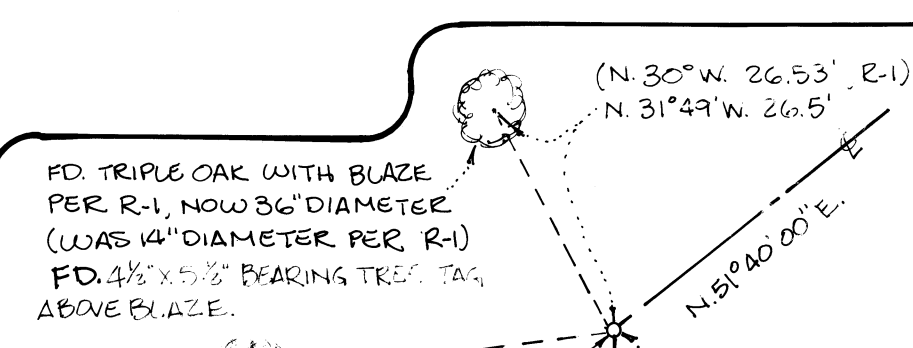


PERMANENT WITNESS MONUMENTS (SEE LEGEND) WERE THEN SET AFTER ROAD CONSTRUCTION. IN ADDITION, THREE FOUND MONUMENTS PER C.S. 7453 WERE DESTROYED. THE LOCATION OF TWO OF THEM (SEE DETAIL "C") ARE WITNESSED BY THE MONUMENTS SET HEREON AND THE TIES TO THEM. THE LOCATION OF THE THIRD ONE (AT POINT ⑤) IS WITNESSED DIRECTLY BY REPLACING IT WITH A MONUMENT AS SHOWN HEREON.

FD. STONE @ S.W. CORNER OF ALFRED RHINEHART D.L.C. #73 PER C.S. 7453. STONE WAS RESET WITH 3" DIA. BRASS CAP ON 6" DIA. CONCRETE PIER INSIDE A STREET MONUMENT BOX. CAP IS STAMPED "BENTON COUNTY SURVEY, S.W. CORNER A. RHINEHART D.L.C. #73. (STONE WAS REMOVED DURING ROAD CONSTRUCTION SEE NARRATIVE.)

THIS MONUMENT REMAINS

SEE DETAIL "A"



FD. 30" DOUBLE OAK WITH OLD BLAZE (NOT OF RECORD).
 FD. 4 1/2" x 5 1/2" BEARING TREE TAG ABOVE BLAZE.

DETAIL "A" (NO SCALE)

FD. 1/2" IRON PIPE AT NLY. N.E. CORNER OF BENJAMIN CUTLER D.L.C. #68. THIS MON. SHOWN ON R-1, BUT NOT DESCRIBED.

FD. IRON, APPX. 3" IN DIAMETER WITH NAIL PER R-1, APPX. 1.5' BELOW ROAD SURFACE

FD. 3/4" x 5/8" BEARING TREE TAG ABOVE BLAZE.

FD. TRIPLE OAK WITH BLAZE PER R-1, NOW 36" DIAMETER (WAS 14" DIAMETER PER R-1)

FD. 4 1/2" x 5 1/2" BEARING TREE TAG ABOVE BLAZE.

FD. 3/4" x 5/8" BEARING TREE TAG ABOVE BLAZE.

FD. 1/2" IRON PIPE AT NLY. N.E. CORNER OF BENJAMIN CUTLER D.L.C. #68. THIS MON. SHOWN ON R-1, BUT NOT DESCRIBED.

FD. 3/4" x 5/8" BEARING TREE TAG ABOVE BLAZE.

FD. 3/4" x 5/8" BEARING TREE TAG ABOVE BLAZE.

FD. 3/4" x 5/8" BEARING TREE TAG ABOVE BLAZE.

FD. 3/4" x 5/8" BEARING TREE TAG ABOVE BLAZE.

FD. 3/4" x 5/8" BEARING TREE TAG ABOVE BLAZE.

FD. 3/4" x 5/8" BEARING TREE TAG ABOVE BLAZE.

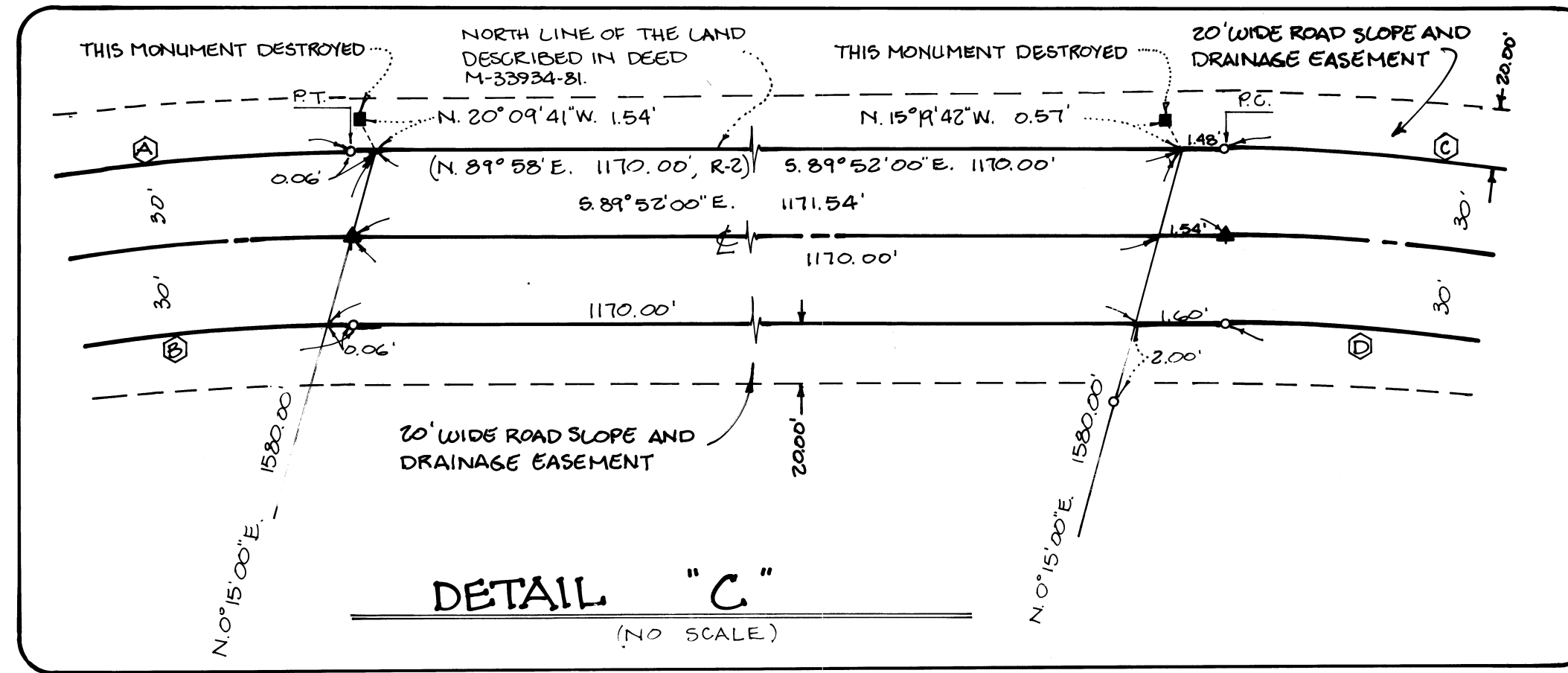
FD. 3/4" x 5/8" BEARING TREE TAG ABOVE BLAZE.

FD. 3/4" x 5/8" BEARING TREE TAG ABOVE BLAZE.

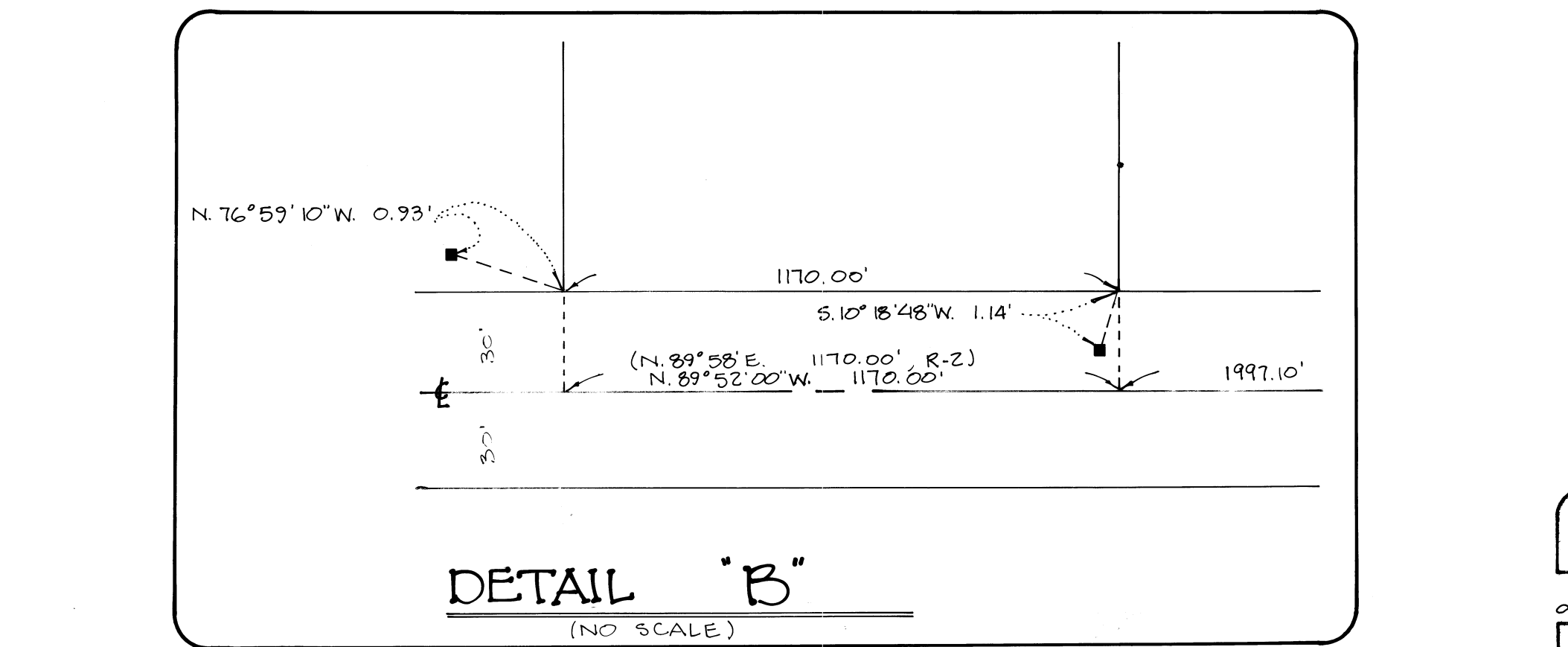
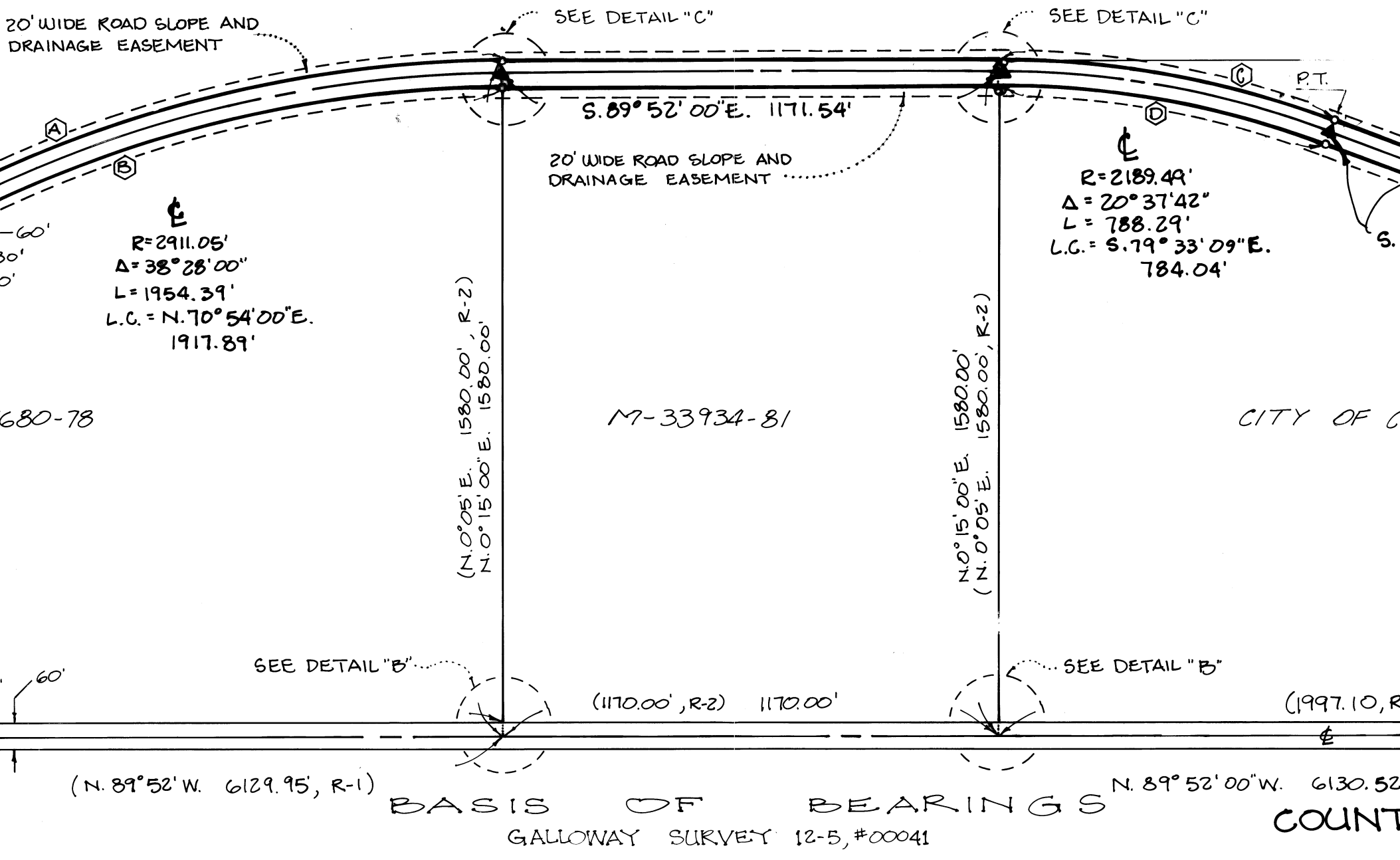
FD. 3/4" x 5/8" BEARING TREE TAG ABOVE BLAZE.

FD. 3/4" x 5/8" BEARING TREE TAG ABOVE BLAZE.

FD. 3/4" x 5/8" BEARING TREE TAG ABOVE BLAZE.



DETAIL "C" (NO SCALE)



DETAIL "B" (NO SCALE)

RIGHT-OF-WAY CURVE TABLE

COURSE	RADIUS	Δ	LENGTH	LONG CHORD
①	2941.05'	38° 28' 00"	1974.53'	N. 70° 54' 00"E. 1937.66'
②	2851.05'	38° 28' 00"	1934.25'	N. 70° 54' 00"E. 1898.13'
③	2219.49'	20° 37' 42"	779.09'	S. 79° 33' 09"E. 794.78'
④	2159.49'	20° 37' 42"	777.49'	S. 79° 33' 09"E. 773.30'
⑤	2159.49'	20° 42' 23"	802.43'	S. 79° 35' 29"E. 776.19'
⑥	2219.49'	20° 42' 23"	802.12'	S. 79° 35' 29"E. 797.76'



RECORD OF SURVEY

FOR BENTON COUNTY
 OF A PORTION OF
 AIRPORT AVENUE : CO. RD. 25280
 LYING IN
 THE SOUTH 1/2 OF SECTION 21, THE SOUTH 1/2 OF SECTION 22, THE
 NORTHWEST 1/4 OF SECTION 27, AND THE NORTH 1/2 OF SECTION
 28, ALL IN TOWNSHIP 12 SOUTH, RANGE 5 WEST (W.B.M.), ALSO
 LYING WITHIN PORTIONS OF THE ALFRED RHINEHART D.L.C. #73
 THE JAMES W. DUNN D.L.C. #61 AND THE SAMUEL GAGE D.L.C. #57.
 DATED: AUGUST 22, 1983

PREPARED BY:
 BENTON COUNTY PUBLIC WORKS
 360 S.W. AVERY
 CORVALLIS, OR. 97333

Benton County
 Surveyor's Office
 C.S. #7567
 FIELD DATE: 9-21-83
 PLOT SIZE: 24" x 36"
 P.M.D.
 see also c.s. 7453

SCALE: 1" = 300'