

7669

7669

SURVEY FOR  
 WILLAMETTE INDUSTRIES, INC.  
 IN  
 SECTION 24  
 T.11S., R.8W., W.M.  
 LINCOLN COUNTY, OREGON  
 AUGUST 9, 1984 1" = 400'

Benton County  
 Surveyor's Office  
 C.S. FILE NO. 7669  
 FILING DATE 8-22-84  
 SCALE 18" x 24" 7.M.F.D.

NARRATIVE

THE PURPOSE OF THIS SURVEY WAS TO ESTABLISH THE EAST PROPERTY LINE FOR WILLAMETTE INDUSTRIES, INC., IN SECTION 24, TOWNSHIP 11 SOUTH, RANGE 8 WEST, WILLAMETTE MERIDIAN, LINCOLN COUNTY, OREGON.

THE SURVEY BEGAN IN JULY 1984 AND THE CORNERS WERE SET ON AUGUST 3, 1984. THE EQUIPMENT USED ON THIS SURVEY WAS A WILD T-16 THEODOLITE AND D14L E.D.M.

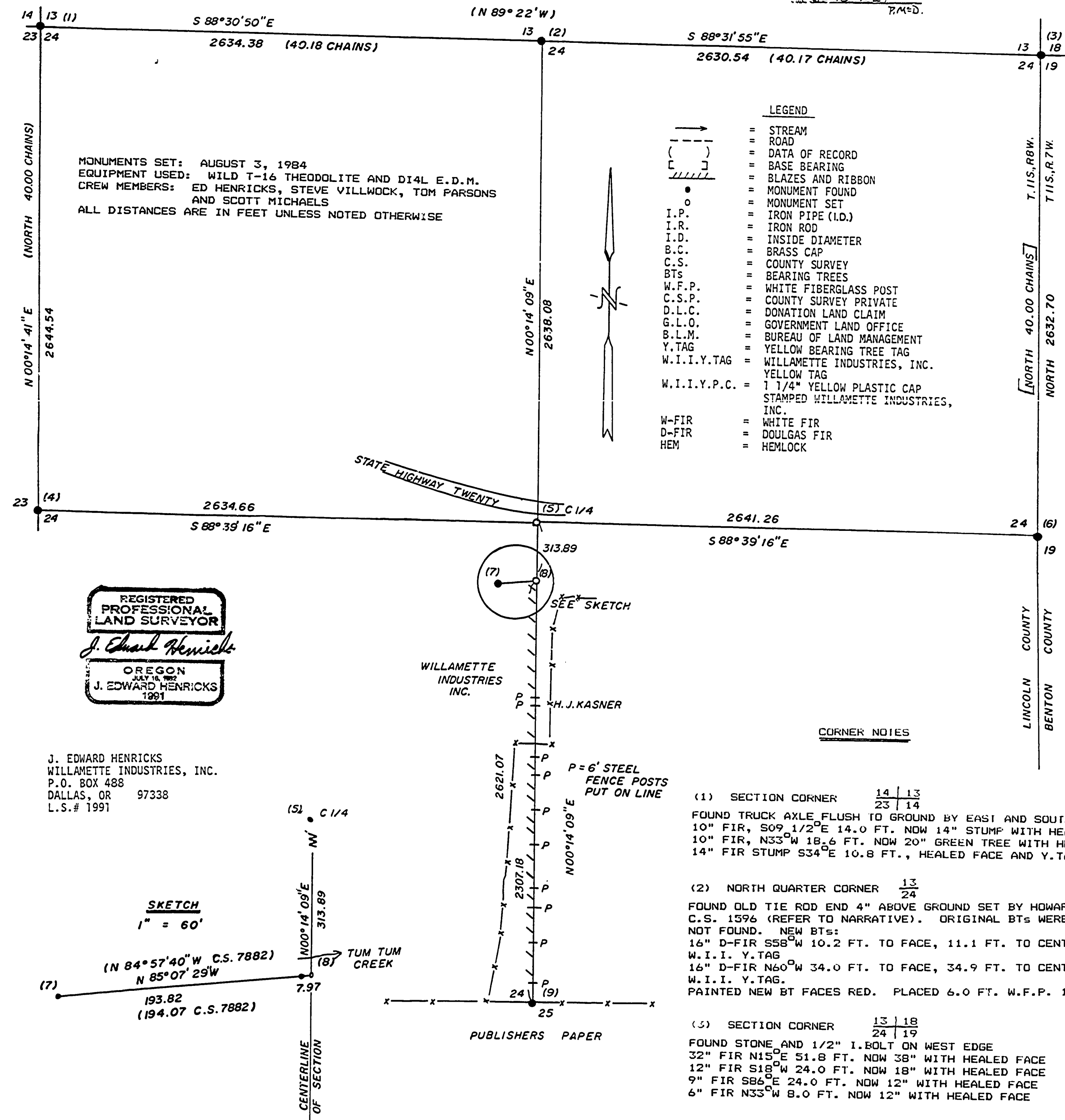
THE NORTH QUARTER CORNER OF SECTION 24 WAS SET BY HOWARD TAYLOR ALONG WITH AN APPROXIMATE CENTER USING A STAFF COMPASS AND CHAIN. MR. TAYLOR FILED THIS INFORMATION IN LINCOLN COUNTY C.S. 1596 AND STATED HIS METHOD USED MAY NOT HAVE BEEN SUFFICIENTLY ACCURATE. I MEASURED THE ENTIRE MILE ON THE NORTH LINE AND FOUND HIS SET CORNER TO BE ONLY 1.6 FT. EAST AND 0.46 FT. SOUTH OF THE CALCULATED POSITION. I FOUND THIS ACCEPTABLE AND USED TAYLOR'S MONUMENT.

USING MR. TAYLOR'S NORTH QUARTER CORNER AND THE OTHER FOUND QUARTER CORNERS I FIND MR. TAYLOR'S 3/4" I.P. (FROM C.S. 1596) AT THE CENTER TO BE 6.93 FT. S87°39'48"E OF THE TRUE POSITION. I SET A NEW MONUMENT AT THE CORRECT POSITION.

WILLAMETTE INDUSTRIES, INC., NORTH LINE COMES FROM C.S. 7882 WITH THE LAST BEARING AND DISTANCE INTERSECTING THE NORTH/SOUTH CENTERLINE OF THE SECTION. I TIED THESE LAST TWO MONUMENTS 3/4" I.P.; (REFER TO SKETCH AND NUMBERS 7 AND 8 ON THIS PLAT) AND EXTENDED THROUGH THEM TO THE INTERSECTION OF THE TRUE CENTERLINE AND SET A NEW MONUMENT. I MARKED THE PROPERTY LINE SOUTH FROM THIS MONUMENT WITH BLAZES AND BLUE RIBBON AND BLUE PAINT TO THE SOUTH QUARTER CORNER.

AT THE SOUTH QUARTER CORNER THERE WAS A NEW FENCE RUNNING EAST AND WEST. WEST 240.5 FT. FROM THE QUARTER CORNER WAS ANOTHER FENCE HEADED SLIGHTLY NORTHEASTERLY (REFER TO PLAT). THIS FENCE, AT ABOUT 1,400 FT. NORTH OF THE QUARTER CORNER, TURNED AND CROSSED OVER THE CENTERLINE AND THEN HEADED NORTH AGAIN. THIS FIRST 1,400 FT. STRETCH RAN THROUGH MOSTLY FIELD WITH SCATTERED TIMBER. IN TALKING TO THE ADJOINING OWNER, H.J. KASNER, HE ACKNOWLEDGED THAT THE FENCE HAD NEVER BEEN ON LINE AND GAVE ME TEN 6 FT. STEEL FENCE POSTS THAT I SET ALONG THIS SECTION OF THE NORTH/SOUTH CENTER LINE ALONG WITH BLAZES, BLUE RIBBON, AND BLUE PAINT.

COUNTY SURVEYS REFERRED TO FOR THIS SURVEY WERE 87, 1596, 7882, 2614, 6622, 4399, 8124, 4575, AND 9946 (LINCOLN CO. SURVEY RECORDS).



REGISTERED PROFESSIONAL LAND SURVEYOR  
 J. Edward Henricks  
 OREGON  
 J. EDWARD HENRICKS  
 1991

J. EDWARD HENRICKS  
 WILLAMETTE INDUSTRIES, INC.  
 P.O. BOX 488  
 DALLAS, OR 97338  
 L.S.# 1991

SKETCH  
 1" = 60'  
 (N 84°57'40"W C.S. 7882)  
 N 85°07'29"W  
 193.82  
 (194.07 C.S. 7882)

(4) WEST QUARTER CORNER 23 | 24  
 FOUND 1 1/4" I.P. FROM C.S. 4575  
 C.S. 1596 BTs  
 14" FIR S03°E 225.8 FT. NOW 35" GREEN TREE, HEALED FACE. PLACED  
 W.I.I. Y.TAG ON TREE.  
 12" CEDAR N06°W 157.0 FT. NOW 31" GREEN TREE, HEALED FACE. PLACED  
 W.I.I. Y.TAG ON TREE.

(5) CENTER QUARTER CORNER  
 SET 5/8"x30" I.R. WITH W.I.I. Y.P.C. 25" IN GROUND. PUT 6.0 FT. W.F.P. 1.0 FT. SOUTH OF I.R.  
 36" D-FIR N42°W 32.9 FT. TO FACE, 34.2 FT. TO CENTER, SCRIBED C1/4S24BT. FIR IS ON SOUTH EDGE OF HIGHWAY, PAINTED FACE YELLOW  
 12" POWER POLE S07°W 8.9 FT. TO 1 1/2" P.K.NAIL IN WEST SIDE 1.5 FT. ABOVE GROUND  
 UDELL APPX. C1/4 3/4" I.P.I.D. N87°39'48"W 6.93 FT.  
 THIS I.P. IS 2" ABOVE GROUND IN OLD NORTH/SOUTH FENCE.  
 PUT UP W.I.I. Y.TAGS ON FIR AND POWER POLE

(6) EAST QUARTER CORNER 24 | 19  
 FOUND 2 IRONS 2" BELOW GROUND FROM C.S. 87  
 S45°W 5.5 FT. IS A WEST/SOUTH FENCE CORNER  
 20" FIR S28°W 30.0 FT. HEALED FACE  
 20" FIR S10°E 27.0 FT. HEALED FACE

(7) FOUND 3/4" I.P. FROM C.S. 7882 13" ABOVE GROUND WITH 6 FT. STEEL POST 4.5 FT. ABOVE GROUND ON WEST EDGE.

(8) PROPERTY CORNER  
 SET 5/8"x30" I.R. WITH W.I.I. Y.P.C. 26" IN GROUND. PUT 6.0 FT. W.F.P. 1.0 FT. SOUTH OF I.R.  
 PROPERTY LINE BLAZED AND PAINTED BLUE WITH BLUE RIBBON MARKED SOUTH OF I.R.  
 S85°07'29"W 7.97 FT. IS 3/4" I.P. 4' ABOVE GROUND BY UDELL SURVEY #7882. THIS SET CORNER IS ON THE CENTERLINE.

C.S. 7669