

DRAWING NUMBER  
**7998**  
 PLANNING CORPORATION • IRVINE, CALIFORNIA  
 INDICATED BY NUMBER OF YEAR

DRAWING NUMBER  
**799.8**  
 PLANNING CORPORATION • IRVINE, CALIFORNIA  
 INDICATED BY NUMBER OF YEAR

7998  
 5/17/87

MAP OF SURVEY  
 for:  
**MARK WINLUND**  
 MAY 13, 1987

**LOCATION**

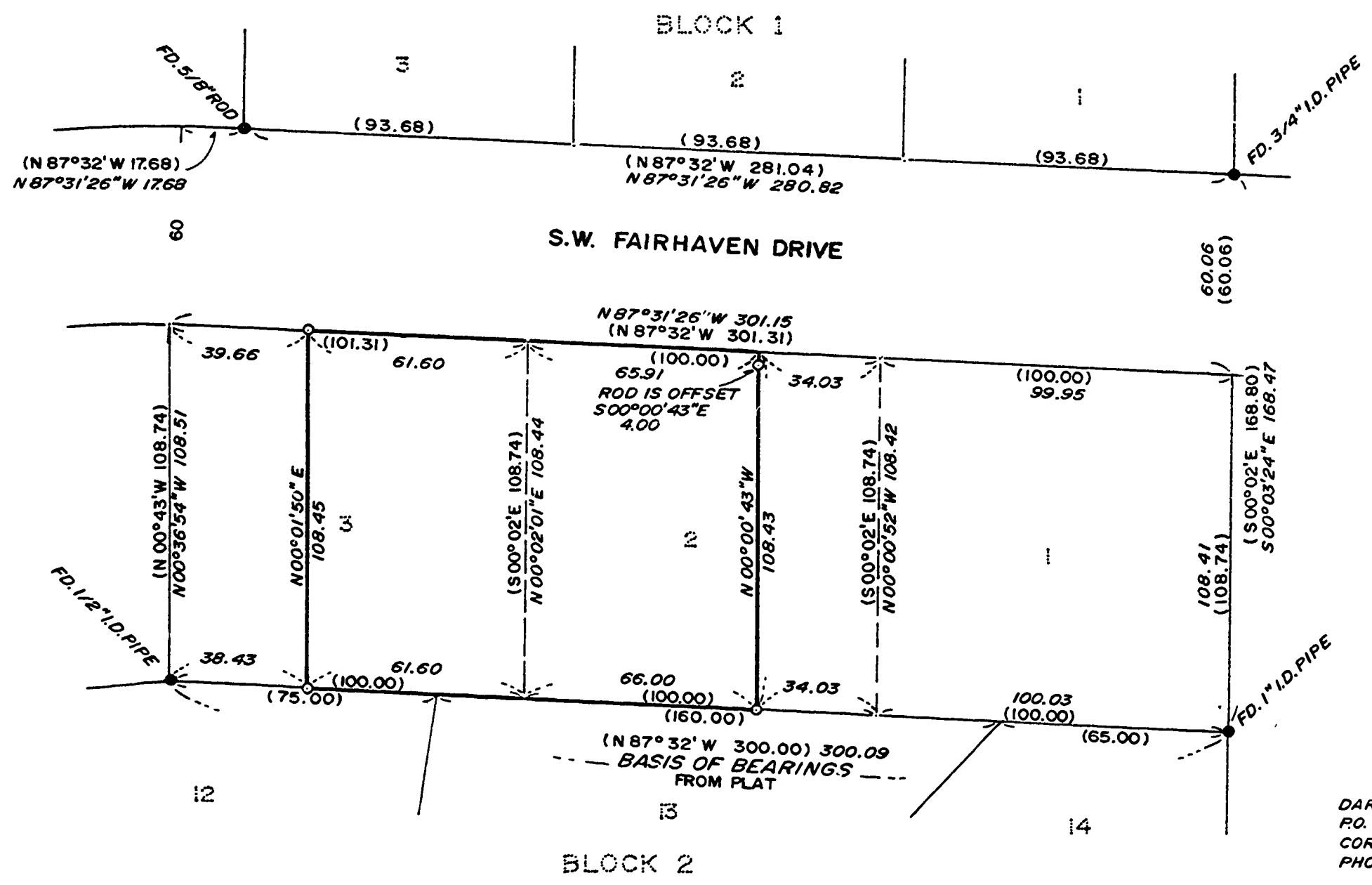
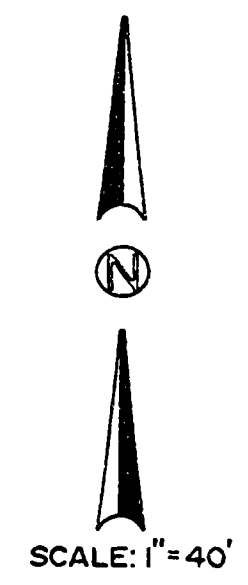
LOTS 2 & 3, BLOCK 2, FAIRHAVEN HEIGHTS,  
 G.W. BETHERS D.L.C. No. 49  
 N.E. 1/4 SECTION 9, T.12 S., R.5 W., W.M.  
 BENTON COUNTY, OREGON.

**LEGEND**

- MONUMENT FOUND, TYPE NOTED
- SET 5/8" X 30" IRON ROD WITH YELLOW PLASTIC CAP STAMPED "D.W. HARMS, P.L.S. 1079"
- ( ) INFORMATION OF/OR CALCULATED FROM THE PLAT OF FAIRHAVEN HEIGHTS.
- I.D. INNER DIAMETER

**NARRATIVE**

THE PURPOSE OF THIS SURVEY IS TO MONUMENT THE CORNERS OF A TRACT DESCRIBED AS: LOT 2, BLOCK 2, EXCEPT THE EAST 34.0 FEET OF EVEN WIDTH; ALSO THE EAST 61.54 FEET OF EVEN WIDTH OF LOT 3, BLOCK 2, FAIRHAVEN HEIGHTS. HOLDING THE POSITION OF FOUND MONUMENTS I CALCULATED, BY PROPORTION, THE POSITION OF THE LOT CORNERS THEN HELD THE DEED DISTANCES (34.0 & 61.54 FEET OF EVEN WIDTH).



DARRYL W. HARMS, P.L.S.  
 P.O. BOX 1051  
 CORVALLIS, OR. 97339  
 PHONE: (503) 758-5579

REGISTERED  
 PROFESSIONAL  
 LAND SURVEYOR

OREGON  
 JULY 30, 1978  
 DARRYL W. HARMS  
 1079

Benton County  
 Surveyor's Office  
 C. S. FILE NO. 7998  
 FILING DATE 5-18-1987  
 FILE SIZE 11" X 17" AF

