

RECORD OF SURVEY / MINOR LAND PARTITION FOR MARION C. AND ESTELLE M. GALLAHER

LOCATED IN THE DAVID BUTTERFIELD D.L.C. NO. 47 IN THE S.W. 1/4
OF SECTION 11, TOWNSHIP 12 SOUTH, RANGE 5 WEST, W.M.,
BENTON COUNTY, OREGON

SCALE: 1"=100

APRIL 30, 1987

APPROVED:

Tom Coffey
COMMUNITY DEVELOPMENT
SERVICES MANAGER

5-15-87
DATE

Neil Mann
CITY ENGINEER

5-15-87
DATE

Benton County
Surveyor's Office

C.S. NO. 8000
FILING DATE 5-18-1987
FILE SIZE 18"x24" A-

SURVEYOR'S CERTIFICATE:

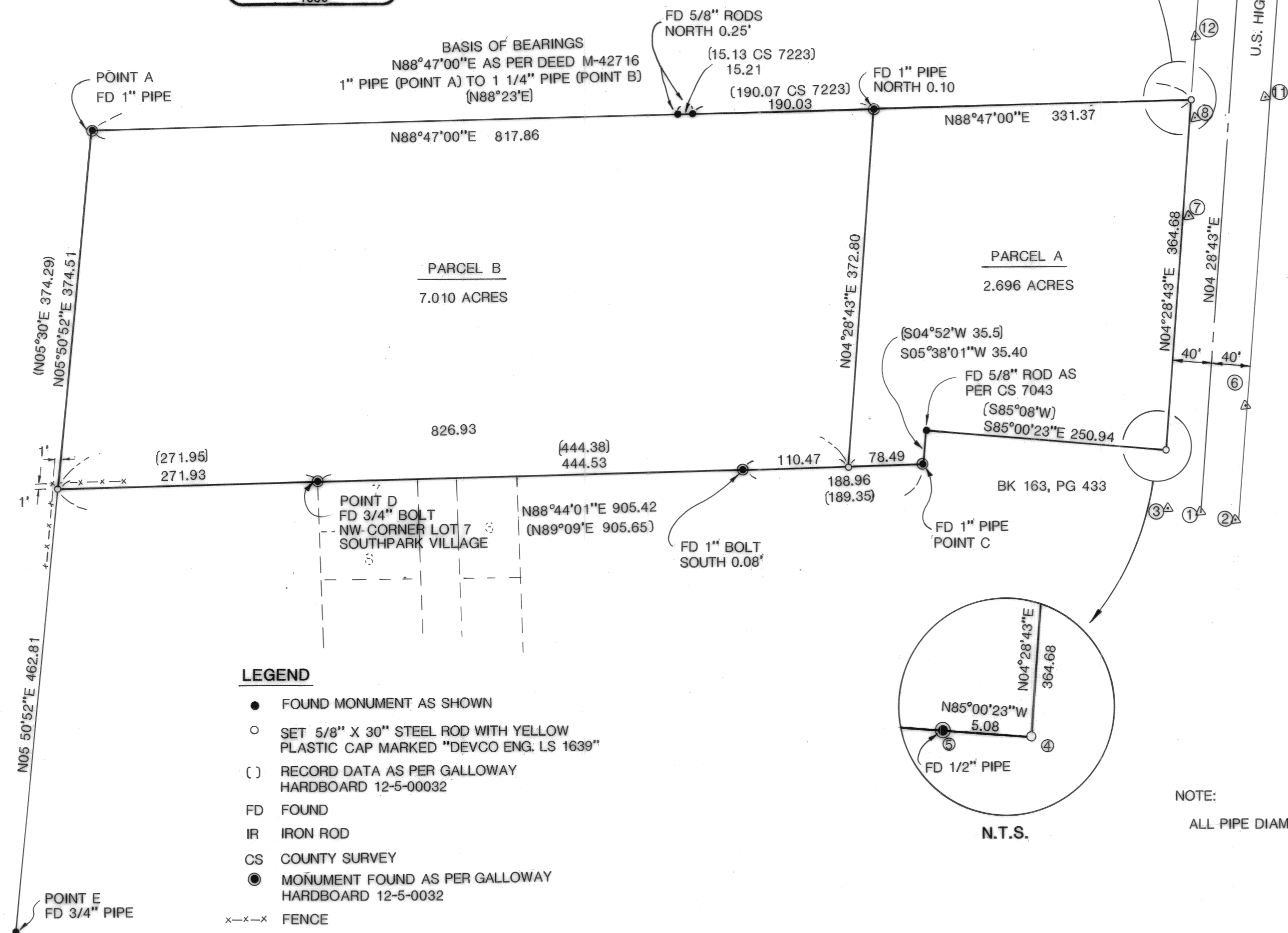
I, JACK R. BURRELL, HEREBY CERTIFY THAT
THIS FINAL PARTITION HAS BEEN PREPARED
UNDER MY DIRECTION.

REGISTERED
PROFESSIONAL
LAND SURVEYOR

Jack R. Burrell

OREGON
JULY 14, 1978
JACK R. BURRELL
1630

DEVCO ENGINEERING, INC.
P.O. BOX 1211
CORVALLIS, OR 97339



LEGEND

- FOUND MONUMENT AS SHOWN
- SET 5/8" X 30" STEEL ROD WITH YELLOW PLASTIC CAP MARKED "DEVCO ENG. LS 1639"
- () RECORD DATA AS PER GALLOWAY HARDBOARD 12-5-00032
- FD FOUND
- IR IRON ROD
- CS COUNTY SURVEY
- MONUMENT FOUND AS PER GALLOWAY HARDBOARD 12-5-0032
- x-x-x FENCE
- ⑤ POINT NUMBER - SEE "POINT TABLE"

NARRATIVE

PURPOSE:

THE PURPOSE OF THIS SURVEY IS TO MONUMENT A TRACT OF LAND IN CONJUNCTION WITH THAT MINOR LAND PARTITION FILED AT THE CITY OF CORVALLIS, COMMUNITY DEVELOPMENT SERVICES (FILE NUMBER MLP-87-3).

BASIS OF BEARINGS

THE BASIS OF BEARINGS WAS DETERMINED FROM THE FOUND PINS AT POINTS A AND B. THE BEARING USED WAS FROM THE DEED M - 42716 RECORDED IN BENTON COUNTY MICROFILM RECORDS.

BOUNDARY DETERMINATION

THE NORTH AND SOUTH BOUNDARY LINES WERE DETERMINED FROM THE MONUMENTS FOUND AS SHOWN.

THE SOUTHWEST CORNER WAS REESTABLISHED BY BEARING INTERSECTION FROM THE MONUMENTS FOUND AT POINTS C AND D AND POINTS A AND E.

RIGHT-OF-WAY DETERMINATION OF HWY 99W

HISTORY
IN 1924, A BRASS PLUG WAS SHOWN ON STATE HIGHWAY DRAWING NO. 2B1-13 (DATED APRIL 1924) AT STATION 832 + 42. OVER THE YEARS AS THE STATE UPDATED THEIR MAPS THE BRASS PLUG WAS INADVERTENTLY LEFT OFF. IN 1987, THE STATE CREWS REESTABLISHED THE CENTERLINE OF HIGHWAY 99W. IN DOING SO, THEY RECOVERED THE BRASS PLUG AT STATION 832 + 42 AND RAN AN OFFSET LINE 34.00 FEET WEST OF CENTERLINE SETTING PK NAILS.

RIGHT-OF-WAY DETERMINATION

THE CENTERLINE WAS ESTABLISHED BY HOLDING THE BRASS PLUG AND TYING INTO SEVERAL OF THE STATES PK NAILS ON THE 34.00 FOOT OFFSETS LINES. THE RELATIONSHIP TO FOUND MONUMENTS ARE AS SHOWN.

POINT TABLE

POINT NO	MARKER	OSHD STATION	DISTANCE FROM CENTERLINE
1	BRASS PLUG	832+42.00	0
2	1/2" PIPE	832+34.65	36.84 RT
3	PK NAIL	832+42.11	34 LT
4	5/8" ROD	833+04.50	40.00 LT
5	1/2" PIPE	833+04.55'	45.08 LT
6	3/4" PIPE	833+55.51	40.05 RT
7	PK NAIL	835+50.06	33.95 LT
8	PK NAIL	836+50.02	34.00 LT
9	1 1/2" PIPE	836+69.15	40.40 LT
10	5/8" ROD	836+69.19	40.00 LT
11	3/4" PIPE	836+76.47	37.28 RT
12	1/2" ROD CS 6758	837+35.04	40.12 LT

NOTE:

ALL PIPE DIAMETERS ARE INSIDE DIAMETER