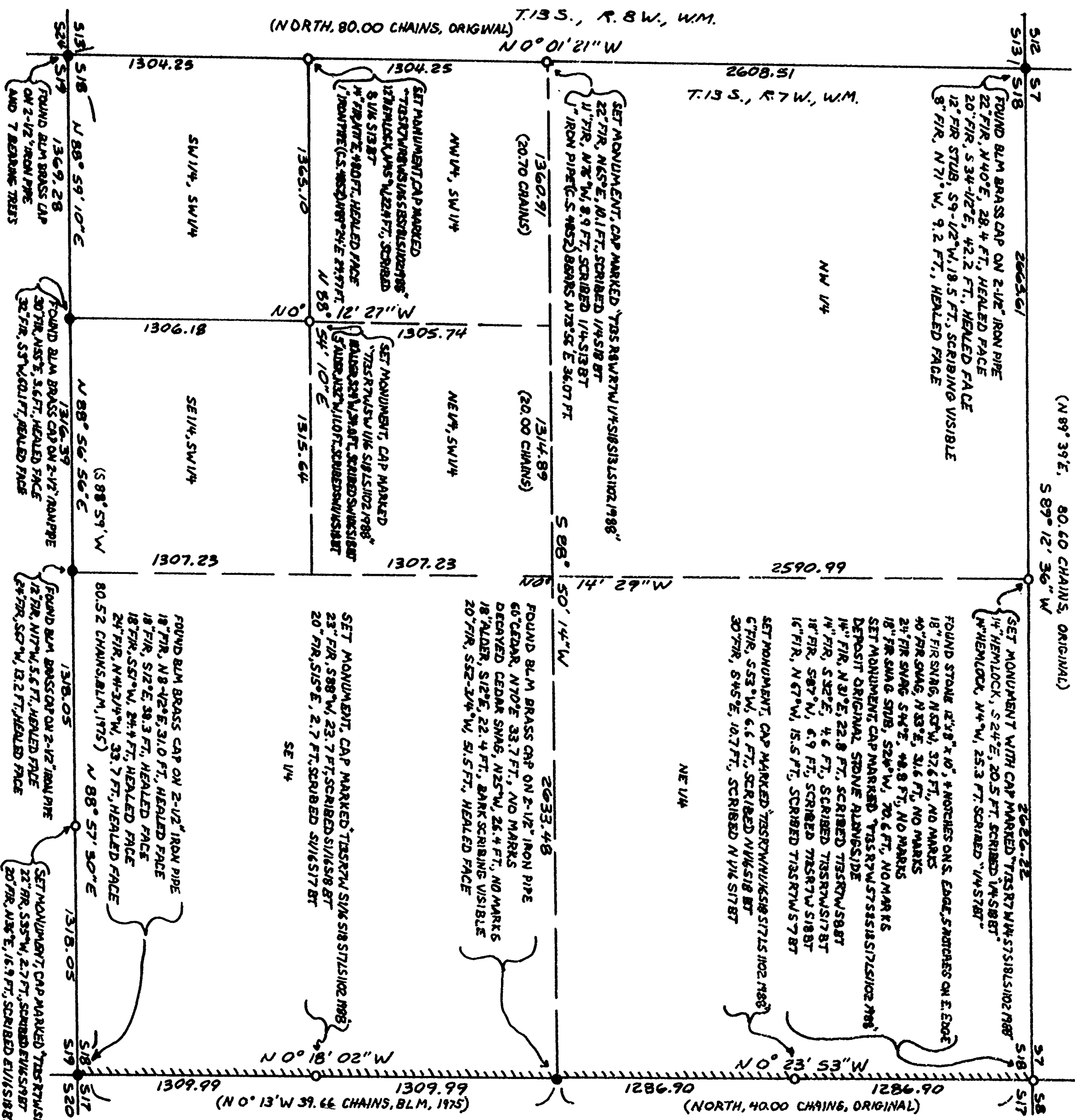
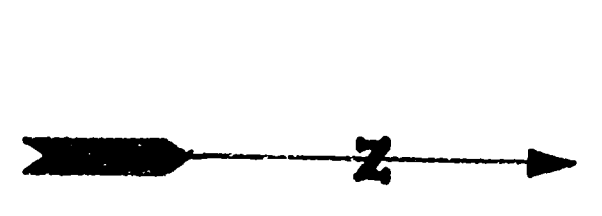


RECORD OF SURVEY
for STARKER FORESTS, INC.
in Section 18, T13S., R7W., Willamette Meridian
Benton County, Oregon
February 10, 1988



SCALE: 1" = 500'



- LEGEND**
- SET 5/8" x 30" IRON ROD WITH 2" ALUMINUM CAP MARKED AS NOTED
 - FOUND MONUMENT AS NOTED
 - TTTTT LIVE POSTED WITH 6 FOOT FIBERGLASS POSTS
 - () DATA OF RECORD

Benton County
Surveyor's Office
FILED
FEB 22 1988
8:22 AM

NARRATIVE

THIS SURVEY WAS DONE TO MARK THE EAST LINE, AND SUBDIVIDE SECTION 18. THE SURVEY WAS PERFORMED WITH A 18-SECOND MANUAL TOTAL STATION. CLOSED TRAVERSE WERE RUN AND RADIAL TIES WERE MADE TO THE CORNERS. THE ORIGINAL 1/4 CORNERS OF SECTIONS 7 AND 18, AND SECTIONS 13 AND 18 WERE SEARCHED FOR, BUT COULD NOT BE FOUND. THE 1/4 CORNER OF SECTION 7 AND 18 IS SET AT PROPORTIONATE POSITION, BASED ON THE ORIGINAL PLAT. THE 1/4 CORNER OF SECTIONS 13 AND 18 IS AT MID-POINT BETWEEN FOUND ORIGINAL SECTION CORNERS. DISTANCES TO BEARING TREES ARE HORIZONTAL TO CENTER OF TREES. PIPE DIAMETERS GIVEN ARE INSIDE DIAMETERS. BASIS OF BEARINGS IS A SET OF STAR OBSERVATIONS.

REGISTERED
PROFESSIONAL
LAND SURVEYOR
Norman D. Springer
OREGON
1017 E. 2nd St.
NORWAN 1102

SPRINGER SURVEYING
3705 MOST ROCK DRIVE
CORVALLIS, OREGON 97330
PHONE: 745-5798