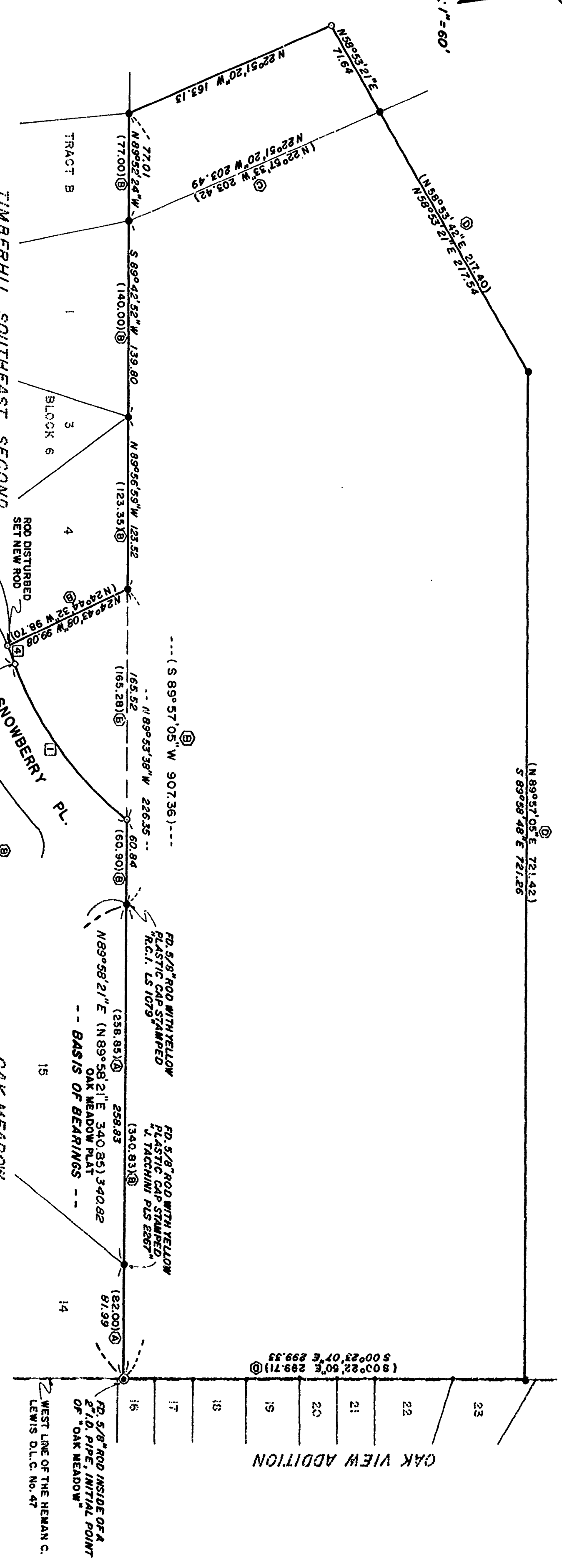
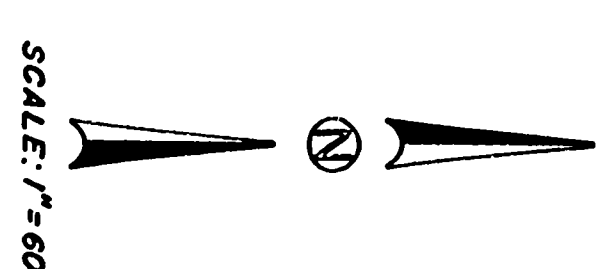


8180
 10-31-98

MAP OF SURVEY for TIMBERHILL ACRES DEVELOPMENT CO.

S.M. STOUTS D.L.C. No. 48, S.W. 1/4 SECTION 23, T11S, R5W, WM.
 BENTON COUNTY, OREGON
 OCTOBER 15, 1998



- ① (A = 100° 56' 48", 10° 57' 01"
 (R = 429.20) 429.20
 (A = 82.00) 82.03
 (LC = 559° 47' 04" W 81.88)
 559° 49' 29" W 81.90
- ② (A = 120° 58' 14", 120° 58' 27"
 (R = 429.20) 429.20
 (A = 97.16) 97.19
 (LC = 560° 47' 47" W 96.96)
 560° 50' 11" W 96.98
- ③ (A = 02° 01' 26", 02° 01' 26"
 (R = 429.20) 429.20
 (A = 15.16) 15.16
 (LC = 566° 18' 42" W 15.16)

- LEGEND**
- FD. 5/8" ROD WITH ALUMINUM CAP STAMPED "R.C.I. LS 1079", EXCEPT AS NOTED.
 - SET 5/8" X 30" IRON ROD WITH YELLOW PLASTIC CAP STAMPED "D.W. HARMS, PLS 1079"
 - () INFORMATION OF/ OR CALCULATED FROM RECORD, SOURCE NOTED
 - ① INNER DIAMETER
 - ② OAK MEADOW PLAT
 - ③ TIMBERHILL SOUTHEAST SECOND ADDITION PLAT
 - ④ C.S. 8024
 - ⑤ C.S. 8494

NARRATIVE

THE PURPOSE OF THIS SURVEY IS TO VERIFY THE BOUNDARY AND SET OR REPLACE MONUMENTS WHICH MAY BE USED TO CONTROL THE BOUNDARIES OF A PROPOSED SUBDIVISION / TIMBERHILL S.E. 4TH ADDITION.

FOR CONTROL TO REPLACE THE MISSING NORTH RIGHT OF WAY POINT OF REVERSE CURVE MONUMENT ON N.W. SNOWBERRY PLACE, I USED A DISTANCE - DISTANCE CALCULATION HOLDING RECORD RADIUS (325.70') FROM THE TWO FOUND MONUMENTS ON THE SOUTH RIGHT OF WAY LINE, THEN PLACING THE NORTH POINT OF REVERSE CURVE MONUMENT RADIALLY AND 50.00 FEET FROM SAID SOUTH P.R.C. MONUMENT. TO REPLACE THE DISTURBED SOUTHEAST CORNER OF LOT 4, BLOCK 6, I USED A DISTANCE - DISTANCE CALCULATION HOLDING THE RECORD RADIUS (429.20') FROM THE S.W. CORNER OF SAID LOT 4, AND THE NORTH RIGHT OF WAY P.R.C. DESCRIBED ABOVE, THEN HELD RECORD DISTANCE (15.16') SOUTHWEST OF SAID LOT 4, 18" ROD WHICH I SET IN C.S. 8035 TO REPRESENT THESE CORNER OF SAID LOT 4, 18" VERY BENT AND LOC. BENEATH THE SURFACE. I USED A BEARING - DISTANCE CALCULATION TO DETERMINE THE INTERSECTION OF THE NORTH RIGHT OF WAY LINE OF SNOWBERRY PLACE WITH THE NORTH BOUNDARY OF TIMBERHILL SOUTHEAST SECOND ADDITION HOLDING THE RADIUS (275.70) AND LINE (N 89° 57' 05" W) BETWEEN THE NEAREST FOUND MONUMENTS EAST AND WEST OF SAID INTERSECTION. THE MONUMENT I SET AT THE MOST WESTERLY NORTHWEST CORNER OF THIS SURVEY INDICATES THE PROPOSED CORNER OF A DRAINAGE WAY PARCEL TO BE DEDICATED WITH THE FINAL SUBDIVISION PLAN.

DARRYL W. HARMS, P.L.S.
 P.O. BOX 1051
 CORVALLIS, OR 97339
 PHONE: (503) 758-5579

REGISTERED
 PROFESSIONAL
 LAND SURVEYOR
 Darryl W. Harms
 OREGON
 No. 1079

Benton County
 Surveyor's Office

FILE NO. 8180
 DATE 10-21-98
 SIZE 18" X 24"