

NOTE: THE BASIS ON WHICH LINES WERE ESTABLISHED WERE THE SURVEYS AND DEEDS LISTED BELOW. A TIE FROM E, THE FOUND MONUMENTS CONTROLLING THE LINES ESTABLISHED AND REESTABLISHED ARE SHOWN HEREON AND THE DEED ELEMENTS CONTROLLING THE ESTABLISHED LINES ARE LISTED BELOW AS C & D. THE PURPOSE OF THIS SURVEY WAS TO MOVE THE DIVISION LINE BETWEEN THE TWO AVERY PARCELS SHOWN HEREON THIRTY-FIVE FEET EAST. THE MONUMENTS AT 1 AND 2 WERE USED AS THE BASIS OF BEARS OF THIS SURVEY. THE LINE IS NOTED AS N89°52'E ON COUNTY SURVEY NUMBER 5398. THE LINES ESTABLISHED WERE CONTROLLED BY THE FOLLOWING DEEDS AND SURVEYS LABELED A THROUGH E.

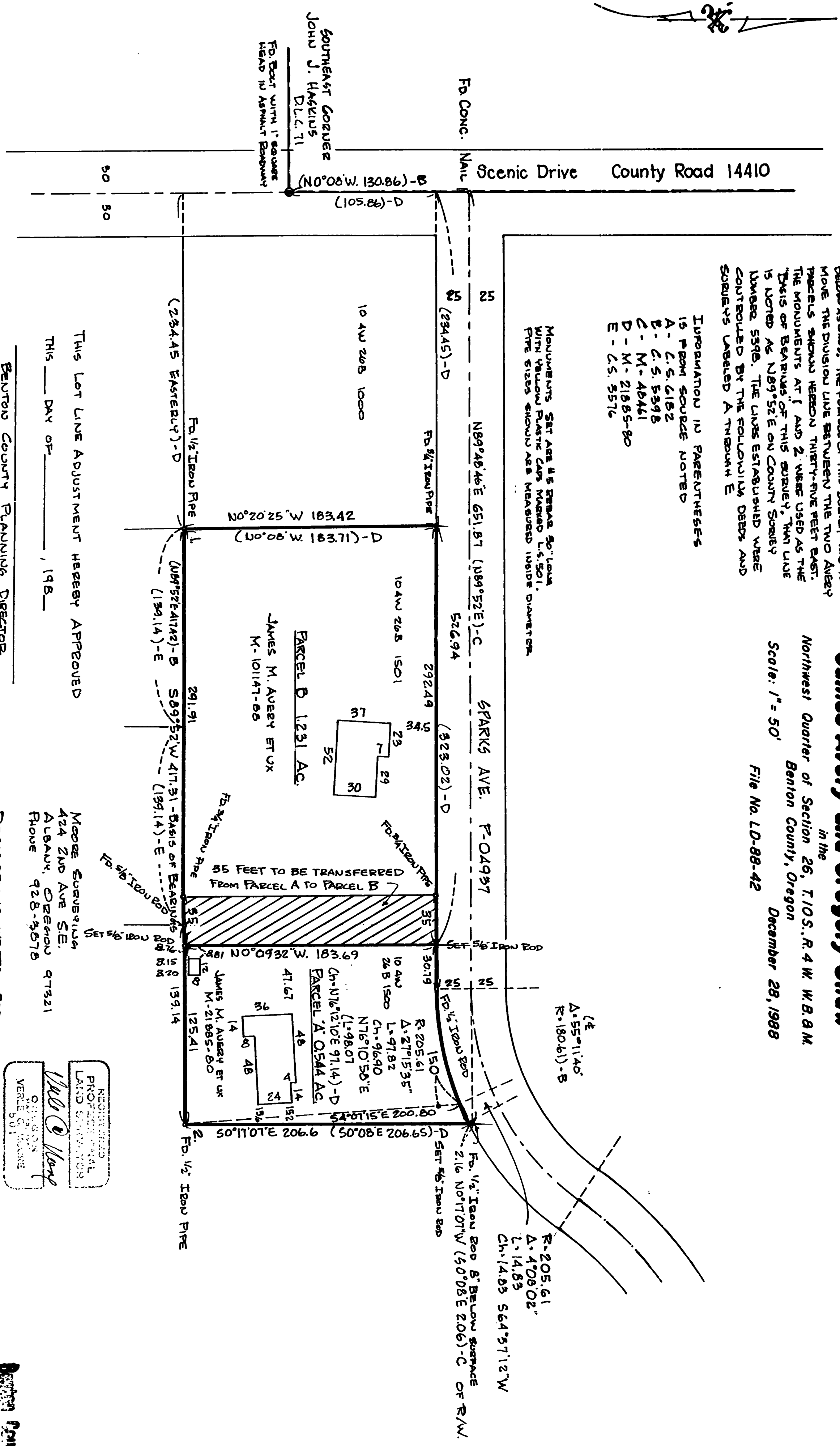
- INFORMATION IN PARENTHESES IS FROM SOURCE NOTED
- A - C.S. 6182
 - B - C.S. 5398
 - C - M-46461
 - D - M-21885-80
 - E - C.S. 3576

MONUMENTS SET ARE 4 1/2" BRASS 3/4" LONG WITH YELLOW PLASTIC CAPS MARKED L.S. 501. PIPE SIZES SHOWN ARE MEASURED INSIDE DIAMETER.

Lot Line Adjustment and Record of Survey

James Avery and Gregory Shaw

in the Northwest Quarter of Section 26, T.10S., R.4 W. W.B.M. Benton County, Oregon
 Scale: 1" = 50'
 File No. LD-88-42
 December 28, 1988



THIS LOT LINE ADJUSTMENT HEREBY APPROVED
 THIS _____ DAY OF _____, 1988

Benton County Planning Director

MOORE SURVEYING
 424 2ND AVE SE
 ALBANY, OREGON 97321
 PHONE 928-3678

RECORDED
 PROFESSIONAL
 LAND SURVEYOR
 VERLE S. MOORE

DESCRIPTIONS WRITTEN FOR THE AREA TO BE TRANSFERRED AND THE PROPOSED EASEMENT ON THE EAST SIDE OF PARCEL A BY VERLE C. MOORE

Benton County
 Surveyor's Office
 CS No. 2
 82226
 FILED DATE 2-6-1989
 2:28