

8267
5-3-89

MAP OF SURVEY

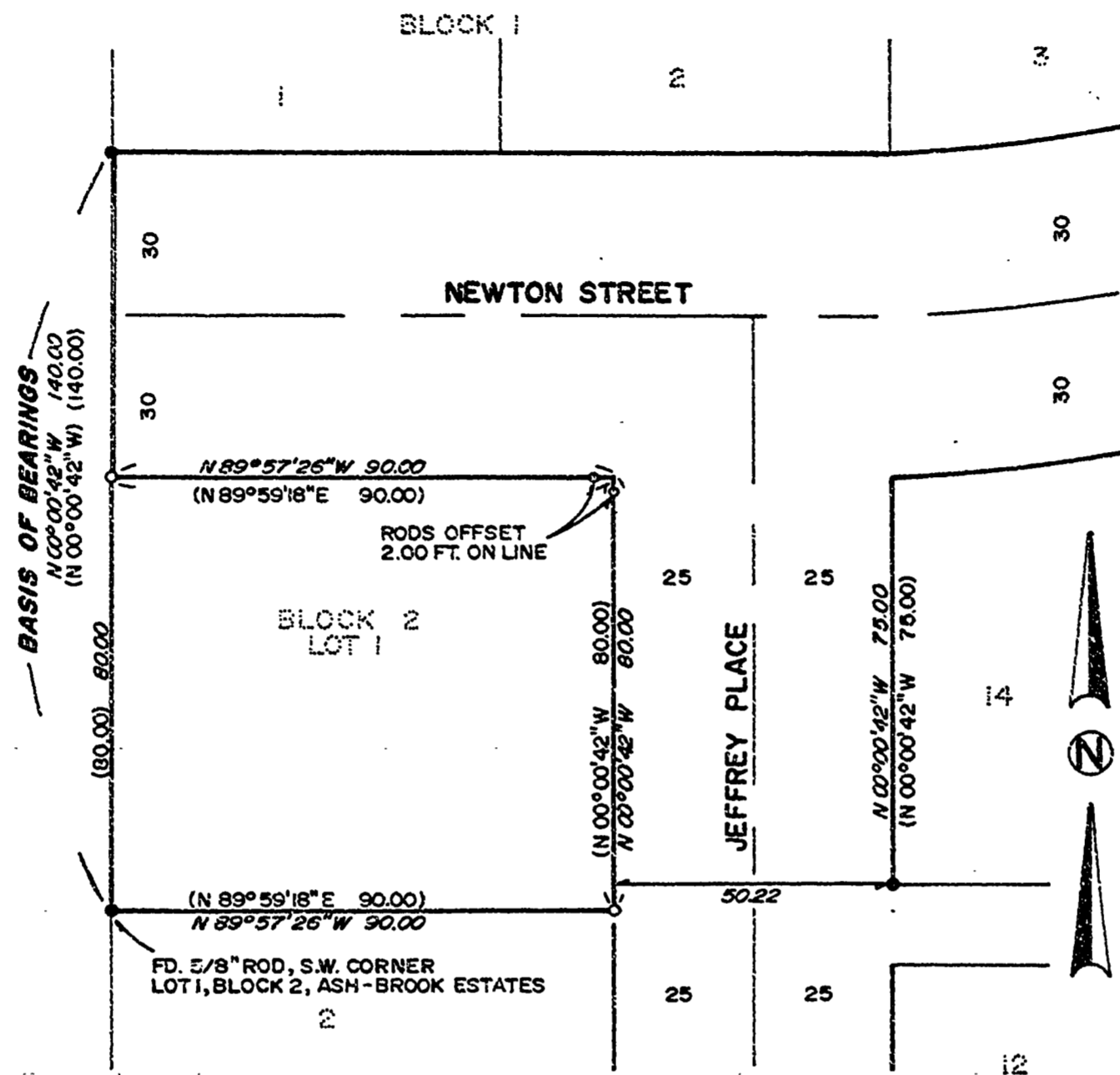
for:

DALE VICKERS

MARCH 28, 1989 SCALE: 1" = 30'

LOT 1, BLOCK 2, ASH-BROOK
ESTATES

N.P. NEWTON D.L.C. No 72
S.W. 1/4 SEC. 7, T.12S., R.5W., W.M.
BENTON COUNTY, OREGON



LEGEND

- FD. 5/8" ROD
- SET 5/8" X 30" IRON ROD WITH YELLOW PLASTIC CAP STAMPED "D.W. HARMS P.L.S. 1079"
- () INFORMATION OF RECORD, ASH-BROOK ESTATES PLAT

NARRATIVE:

THE PURPOSE OF THIS SURVEY IS TO FIND EXISTING AND REPLACE MISSING CORNERS OF LOT 1, BLOCK 2, ASH-BROOK ESTATES. I REPLACED THE NORTHWEST CORNER AT RECORD PLAT DISTANCE BETWEEN THE FOUND SOUTHWEST CORNER OF LOT 1 AND THE SOUTHWEST CORNER OF LOT 1, BLOCK 1. THE NORTHEAST CORNER WAS CALCULATED AT PLAT DISTANCE FROM THE SET NORTHWEST CORNER AND ON LINE WITH THE CALCULATED NORTHWEST CORNER OF LOT 14. I HELD PLAT DISTANCE OF THE EAST AND SOUTH LINES TO REPLACE THE SOUTHEAST CORNER.

**Benton County
Surveyor's Office**

DARRYL W. HARMS, P.L.S.
P.O. BOX 1051
CORVALLIS, OR 97339
PHONE: (503) 758-5579

REGISTERED
PROFESSIONAL
LAND SURVEYOR

OREGON
JULY 30 1978
DARRYL W. HARMS
1079

GA FILE NO. 8267
FILING DATE 5-3-89
FILE SIZE 8 1/2" x 14"

