

C.S. # 830

Hardcopy 11-7 #9

also see notes in file

F. B. 32-10

F/B #32, Pg. 10-13

See 18, T 11 S, R 7 W.

830 C.S. 318 - May 25, 1922

Return old road from pt. near E+W thru sec. 18

South

(2.135) tot 3.47 S. 11° W

56° 30' W

535° 19' W

5.14° 0' E.

50° 22' 50" R.W.

522° 55' 58" 8.349 W

1.480 (1915.8) = 535° 04' W

5.30° 0' W

5.15° W

5.21° W

5.27° 30' W

5.27° 25' W

1.36  
-5.30  
3.25  
-5.0  
1.78  
-1.30  
3.848  
-1.10  
1.72

Set 4x1 1/2" iron + 1.61 on road survey to pt where it intersects N+S line 18.7 chs E of Township line.

— R.R. to E. gate post

Fences from here back poor on both sides. 30' to 4 wire fine 10' R to 4 wire fine. 30' to 4 wire fine set hub Rt. ang. R.W.

1028  
= 1028  
set E. 133  
= 5° 29'

For Hymns and Shroyer

11. CS 318

Began at a stone + rod at  
the  $\frac{1}{4}$  cor. on north of Seals

S  
W  
N 0°18'E

+89.20  
8,800 1918  
+70.30  
0.598

0°36' L

35.40  
~~33.384~~  
1.662

(-6.0  
1.671

1°5' R

S 41' W

(over to next page)

Aligned in to cor's. E + W - hit. 0.42 N of Sta.

about 90° R.

7.00

6.10

-2400  
3.30

3.015

1.890

-23.50  
3.806

3.490

-15.25  
3.80

3.113

-14.50  
1.873

1.300

road #

3.871

+2.625  
3.061

2.632

1.356

1.113  
2.077

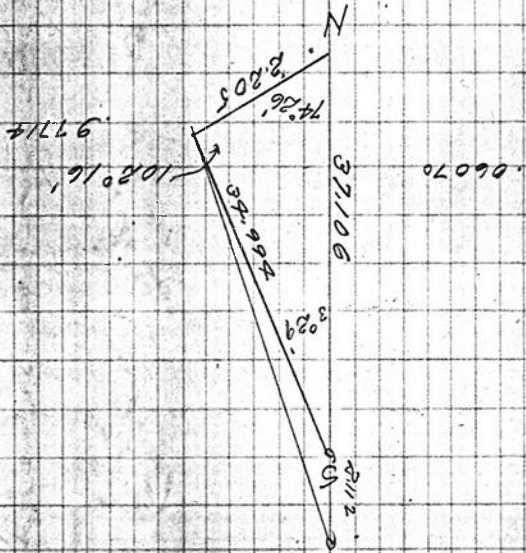
2.593

1.627

+2.3045  
1.530

1.400

$\frac{1}{4}$  cor  $\frac{1}{2}$  of  $\phi$  sec = 39.575



$\frac{1}{4}$  cor 18 + E of  $\frac{1}{4}$  cor 13 + 18  
34' Fir N 00° E .38  
Fir Hollow snag stump N 70° W .12



|        |       |
|--------|-------|
| 2.358  | 2.358 |
| 5.000  | 4.990 |
| -300   |       |
| 4.720  | 4.720 |
| -40    |       |
| 4.458  | 4.460 |
| -6.75  |       |
| 2.970  | 2.979 |
| +10.30 |       |
| 1.797  | .784  |
| +5     |       |
| 3.590  | 3.585 |
| +11.45 |       |
| 2.230  | 2.183 |
| +8.50  |       |
| 2.857  | 2.232 |

to fence cor is about 40.144

+220.30  
943

205 960

188w  
204w  
219w  
233w  
243w  
246w  
257w  
265w  
272w

20.681  
20.438  
1.871  
19.567  
19.837  
270w  
40.139  
1.31

603275 20.11w