

RECORD OF SURVEY

for TOWN AND COUNTRY REALTY
 in the SW 1/4, Section 23, H.C. Lewis D.L.C. No. 47,
 Lot 1, Block 3, First Addition To Charlemagne,
 T.11 S., R.5 W., W.M., Benton County, Oregon
 September 6, 1989

**Benton County
 Surveyor's Office**

Q.A. FILE NO. 8319
 FILING DATE 9/6/1989
 FILE SIZE 11" x 17"

Legend

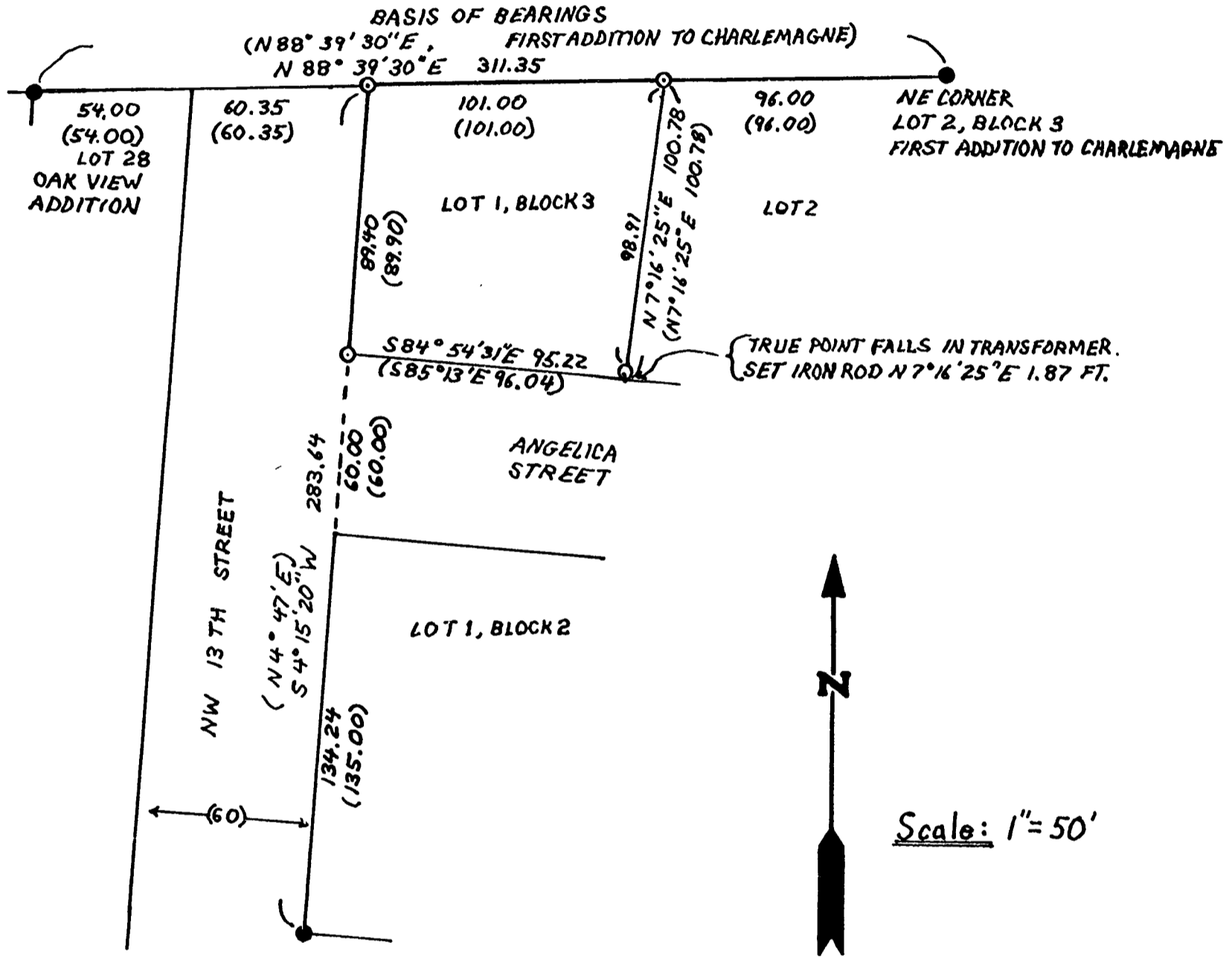
- FOUND 5/8" IRON ROD
- SET 5/8" X 30" IRON ROD WITH YELLOW PLASTIC CAP MARKED "SPRINGER LS1102"
- () DATA OF RECORD

DRAWING NUMBER
8319

PLAN HOLD CORPORATION • IRVINE, CALIFORNIA
 REORDER BY NUMBER 075AR
 POSITION: EDGE OF PRINT ON THIS LINE

DRAWING NUMBER
8319

PLAN HOLD CORPORATION • IRVINE, CALIFORNIA
 REORDER BY NUMBER 075AR
 POSITION: EDGE OF PRINT ON THIS LINE



NARRATIVE: THIS SURVEY WAS DONE TO MONUMENT THE CORNERS OF LOT 1, BLOCK 3, FIRST ADDITION TO CHARLEMAGNE. BASIS OF BEARINGS IS FROM FIRST ADDITION TO CHARLEMAGNE. THE NORTHERLY CORNERS OF LOT 1 WERE SET ON LINE BETWEEN FOUND MONUMENTS. THE SW CORNER OF LOT 1 WAS SET ON LINE, AT PROPORTIONATE DISTANCE BETWEEN THE NW CORNER OF LOT 1, BLOCK 2 AND THE SW CORNER OF LOT 1, BLOCK 2. THE SE CORNER OF LOT 1 WAS COMPUTED AT RECORD BEARING AND DISTANCE FROM THE NE CORNER OF LOT 1. THE TRUE POINT FALLS IN A TRANSFORMER SO A MONUMENT WAS SET N 7° 16' 25" E 1.87 FEET.

REGISTERED
 PROFESSIONAL
 LAND SURVEYOR

Norman D. Springer

OREGON
 JULY 22 1977
 NORMAN D. SPRINGER
 1102

SPRINGER SURVEYING
 37056 MOSS ROCK DRIVE
 CORVALLIS, OREGON 97330
 PHONE: 745-5798