

DRAWING NUMBER
8380

PLAN HOLD CORPORATION • IRVINE, CALIFORNIA
RECORD BY NUMBER 07548
POSITION EDGE OF PRINT ON THIS LINE

DRAWING NUMBER
8380

PLAN HOLD CORPORATION • IRVINE, CALIFORNIA
RECORD BY NUMBER 07548
POSITION EDGE OF PRINT ON THIS LINE

8380 2-27-90

LLA 90-1
LOT LINE ADJUSTMENT
for
BENTON COUNTY HISTORICAL SOCIETY
ON
TAX LOTS 100 and 101
MAP 12-6-12CB
W 1/2 SEC. 12 T12S R6W W.M. 46
DAVID HENDERSON DLC NO. 46
CITY OF PHILOMATH
BENTON COUNTY, OREGON
JANUARY 13, 1990

NARRATIVE
This survey monuments the adjusted lines between T100 and 101. The westerly corners of T100 were set in 1966 by Fred Lemke (CS-4316). The 4 corners of T101 were set by him in 1972 (CS-5324). I found most of the monuments from these surveys as shown. I replaced the monument at ① which was apparently destroyed during construction, on line between the 2 found 1/2" pipes as shown. I held the distance 152.80 ft from the westerly pipe because TL 200 has senior rights to full measure. I set ② on a projection of the line between the found monuments on the northerly RW of Main St. at record distance from ③ which is shown on CS-5324 and stated in M-36576, Benton Co. Deed Records. These same RW monuments establish the Basis of Bearings of College and 12th Streets. It was set as part of the resurvey of the City of Philomath per CS-8047 which set road E intersection monuments instead of Lot & Block corners.

NORTHSTAR SURVEYING INC.
402 NW 5th St.
Corvallis Oregon 97330
PH: 757-9050

LOT LINE ADJUSTMENT APPROVED

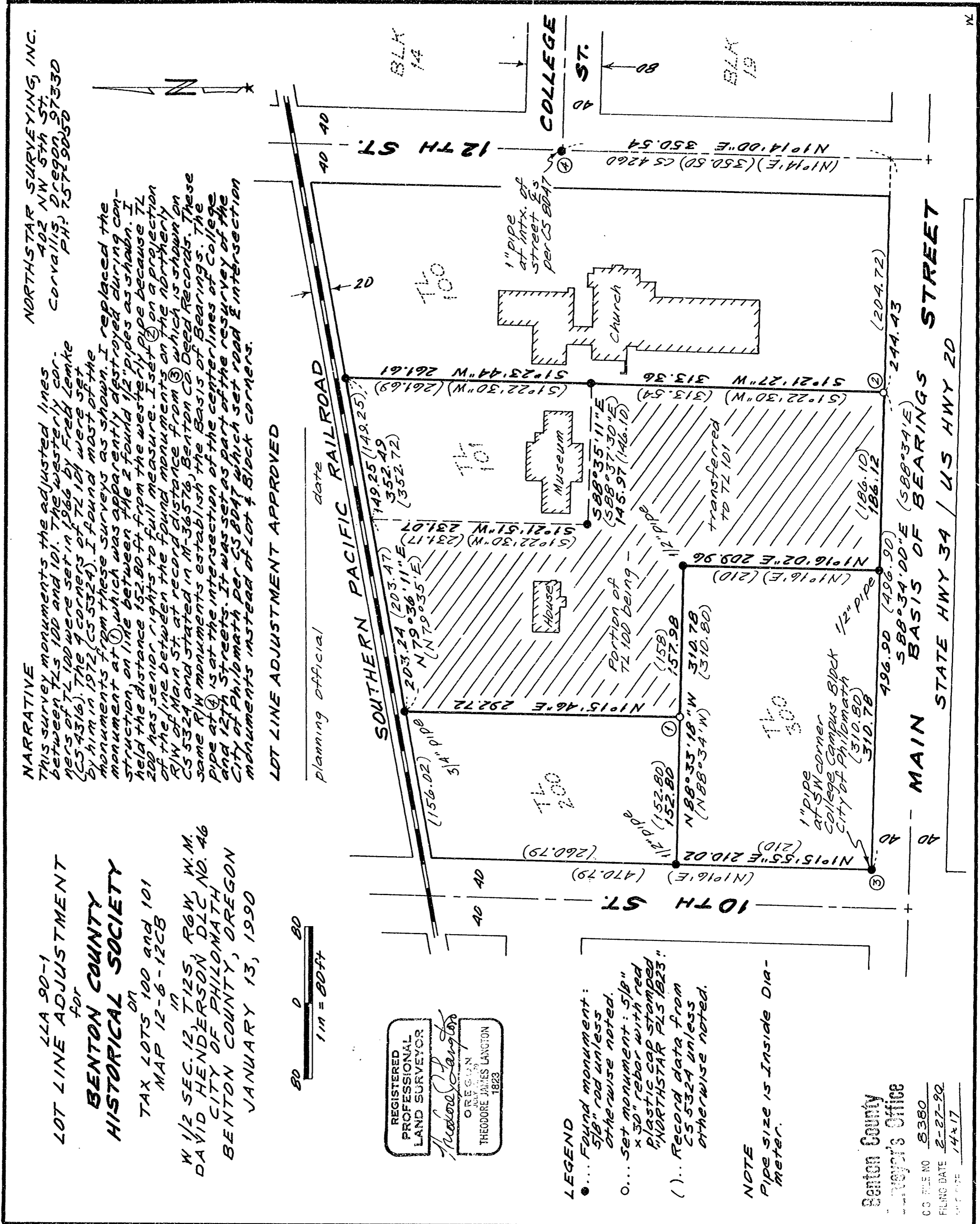


REGISTERED PROFESSIONAL LAND SURVEYOR
Theodore J. Langston
O.R.S. 31.020
THEODORE JAMES LANGSTON
1823

- LEGEND**
- ... Found monument: 5/8" rod unless otherwise noted.
 - ... Set monument: 5/8" x 30" rebar with red plastic cap stamped "NORTHSTAR PLS 1823"
 - () ... Record data from CS-5324 unless otherwise noted.

NOTE
Pipe size is Inside Diameter.

Benton County
Surveyor's Office
C.S. FILE NO 8380
FILING DATE 2-27-90
SHEET NO 14x17



N