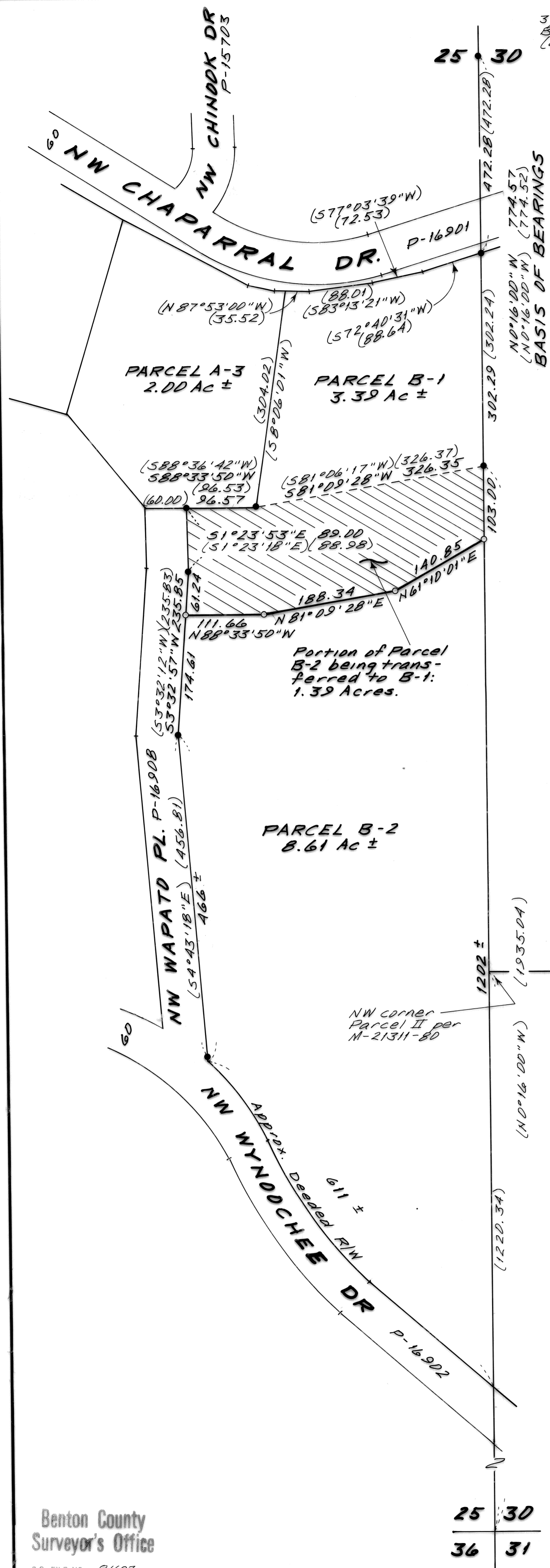


8407
5-16-90



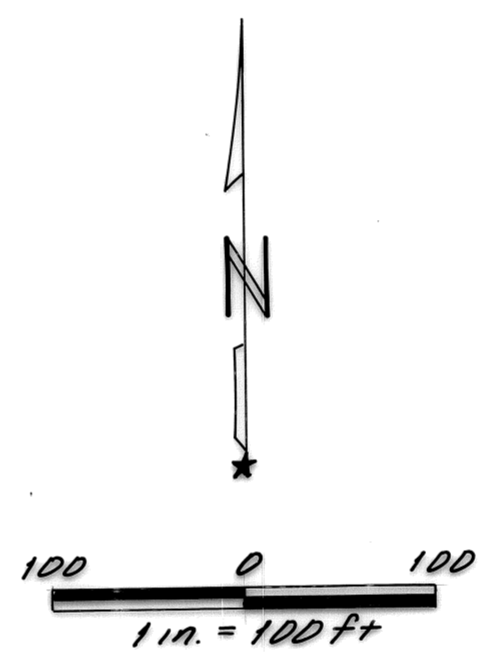
3/4" Benton County
Brass Cap on 2 1/2"
(20) pipe

NARRATIVE

The purpose of this survey was to adjust the line between Parcels B-1 and B-2 and monument the new corners thereof. The change transfers 1.39 Acres from B-2 to B-1. These Parcels were originally established in 1986 by this Company per C5 7806. The new south line of Parcel B-1 was created 150 ft S'ly, at right angles to, the original south lines of Parcels B-1 and A-3. This parallel portion of the new line was made 300 ft long then connected to the new SE corner of B-1 which was created by projecting the east line south, along the Section line, 103 feet. This procedure was according to the client's instructions.

LEGEND

- Found monument: 5/8" rod with yellow N* cap unless otherwise noted.
- o..... Set monument: 5/8" x 30" rebar with red N* cap.
- N* cap. Plastic cap stamped "Northstar PLS 1823"
- ()..... Record data from C5 7806.



REGISTERED
PROFESSIONAL
LAND SURVEYOR
Theodore Langton
OREGON
JULY 13, 1979
THEODORE JAMES LANGTON
1823

NORTHSTAR SURVEYING, INC.
402 NW 5th St.
Corvallis, Oregon, 97330
PH: 757-9050

LOT LINE ADJUSTMENT APPROVED 5/21/90
Andy Munsterman 9/24/90
planning official date

LD-90-10
LOT LINE ADJUSTMENT SURVEY
for
WEGER PARTNERS
IN
B.P. CALDWELL DLC NO. 48
SE 1/4 SEC. 25, T11S, R6W, W.M.
BENTON COUNTY, OREGON

MAY 1, 1990

Benton County
Surveyor's Office

C.S. FILE NO. 8407
FILING DATE 5-16-1990
FILE SIZE 18x24

DRAWING NUMBER
8407

DRAWING NUMBER

DRAWING NUMBER

DRAWING NUMBER
8407